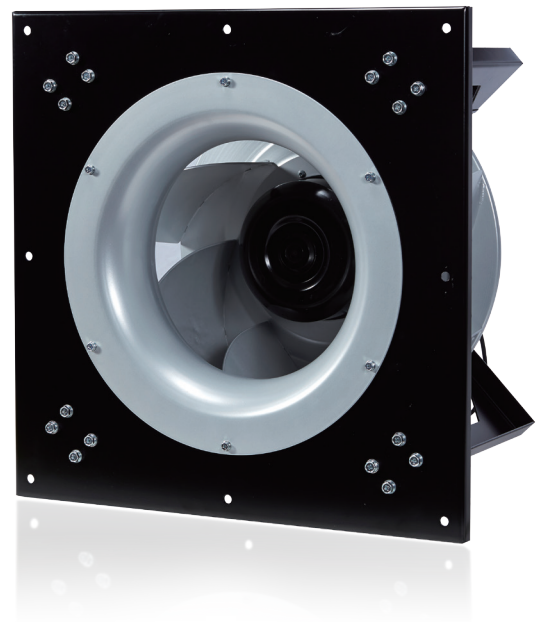


PLUG FANS

Characteristics

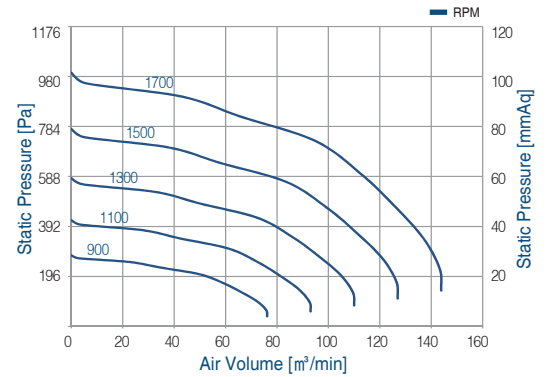
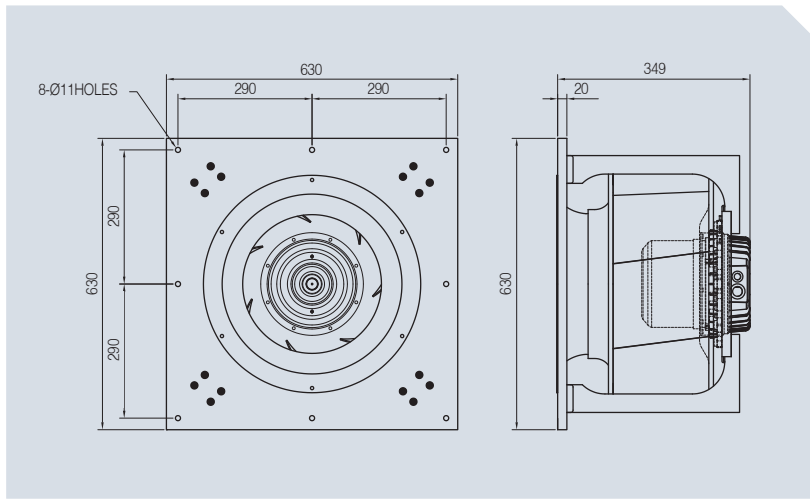
- With the adoption of BLDC motor, control of rotating function enhanced and high efficiency ensured
- With implementation of the specially made backward curve fan, designed to be used for HVAC(Heating, Ventilation & Air Conditioning) fans for high static pressure
- Ultralight and excellent structural strength achieved by implementing light-weight aluminum
- Various models available per capacity (0.2kw~2.2kw)
- Internal and external control possible in the area of single-phase / three-phase (220v~480v available)
- Through high-precision balance calibration, the level of noise and vibration lowered even at high speed rotation
- Mounting structure and design adjustable in accordance to customer's requirements



Product data

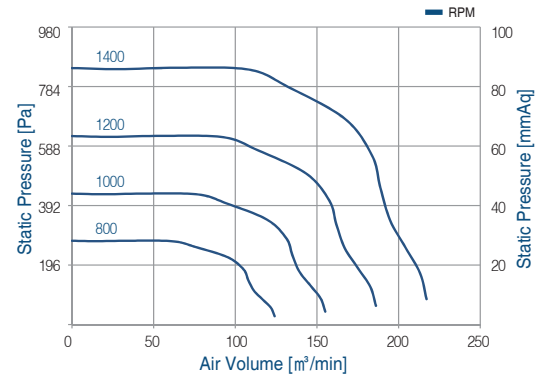
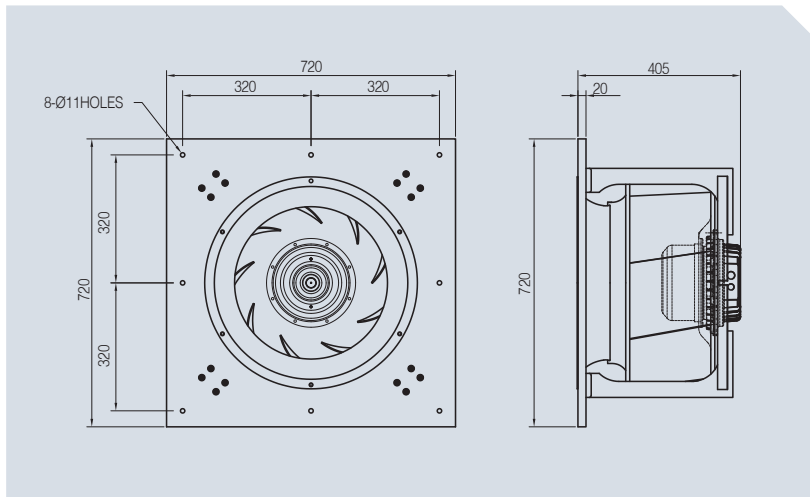
MODEL	Motor Power		Static Pressure		Air Volume	Page
	kw	HP	Pa	mmAq	m ³ /min	
APF-50BL	0.75	1	990	101	145	13p
APF-56BL	1.2	2	843	86	225	14p

• APF-50BL



Rotative speed		Static Pressure																							
RPM		98	10	196	20	294	30	392	40	490	50	588	60	686	70	784	80	882	90						
		Pa	mmAq	Pa	mmAq	Pa	mmAq	Pa	mmAq	Pa	mmAq	Pa	mmAq	Pa	mmAq	Pa	mmAq	Pa	mmAq						
900	Air Volume	m³/min		72		52																			
		ft³/min		2543		1820																			
	Input Power	W		242		285																			
1100	Air Volume	m³/min		92		83		63		15															
		ft³/min		3236		2919		2211		543															
	Input Power	W		342		394		425		261															
1300	Air Volume	m³/min		110		105		95		79		47													
		ft³/min		3885		3695		3366		2774		1671													
	Input Power	W		464		501		564		600		504													
1500	Air Volume	m³/min		128		124		119		110		97		75		41									
		ft³/min		4516		4390		4186		3882		3409		2653		1455									
	Input Power	W		599		640		685		752		798		762		599									
1700	Air Volume	m³/min		136		146		140		131		124		116		102		79		45					
		ft³/min		4802		5142		4943		4640		4373		4083		3611		2797		1579					
	Input Power	W		747		804		838		889		956		1013		1022		947		767					

• APF-56BL



Rotative speed		Static Pressure															
RPM		98	10	196	20	294	30	392	40	490	50	588	60	686	70	784	80
		Pa	mmAq	Pa	mmAq	Pa	mmAq	Pa	mmAq	Pa	mmAq	Pa	mmAq	Pa	mmAq	Pa	mmAq
900	Air Volume	m³/min	116	99													
		ft³/min	4084	3498													
	Input Power	W	220	455													
1000	Air Volume	m³/min	150	140	126	102											
		ft³/min	5295	4938	4451	3601											
	Input Power	W	325	410	710	720											
1200	Air Volume	m³/min	183	176	167	156	141	113									
		ft³/min	6470	6195	5877	5489	4960	3989									
	Input Power	W	470	470	665	980	1050	1020									
1400	Air Volume	m³/min	216	210	203	195	186	175	160	138							
		ft³/min	7625	7406	7166	6884	6566	6178	5648	4871							
	Input Power	W	640	638	665	840	1265	1390	1430	1410							