



Magswitch Technology, Inc.
 8774 Yates Dr. Suite 140
 Westminster, CO 80031
 Magswitch.com.au
 303-468-0662

Magswitch MLAY600

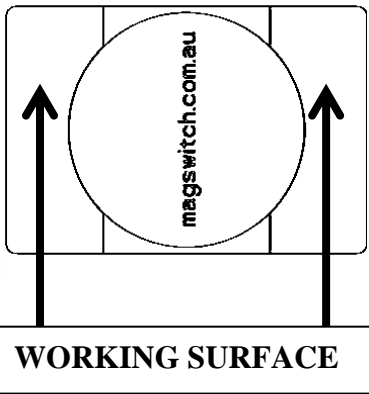
P/N: 8100089

Magswitch LAY series magnets utilize different size magnets to attain different field depths. The MLAY 600 series utilizes 50mm magnets to achieve full saturation at 1/2 inch and greater. The MLAY 600 is a light duty lifting magnet ideal for fitting in tight spots and lifting thin sheet. Light weight and compact size make the MLAY600 perfect for small and medium lifting Jobs.



WARNING!
Do Not Operate Unless In Contact With Ferrous Target

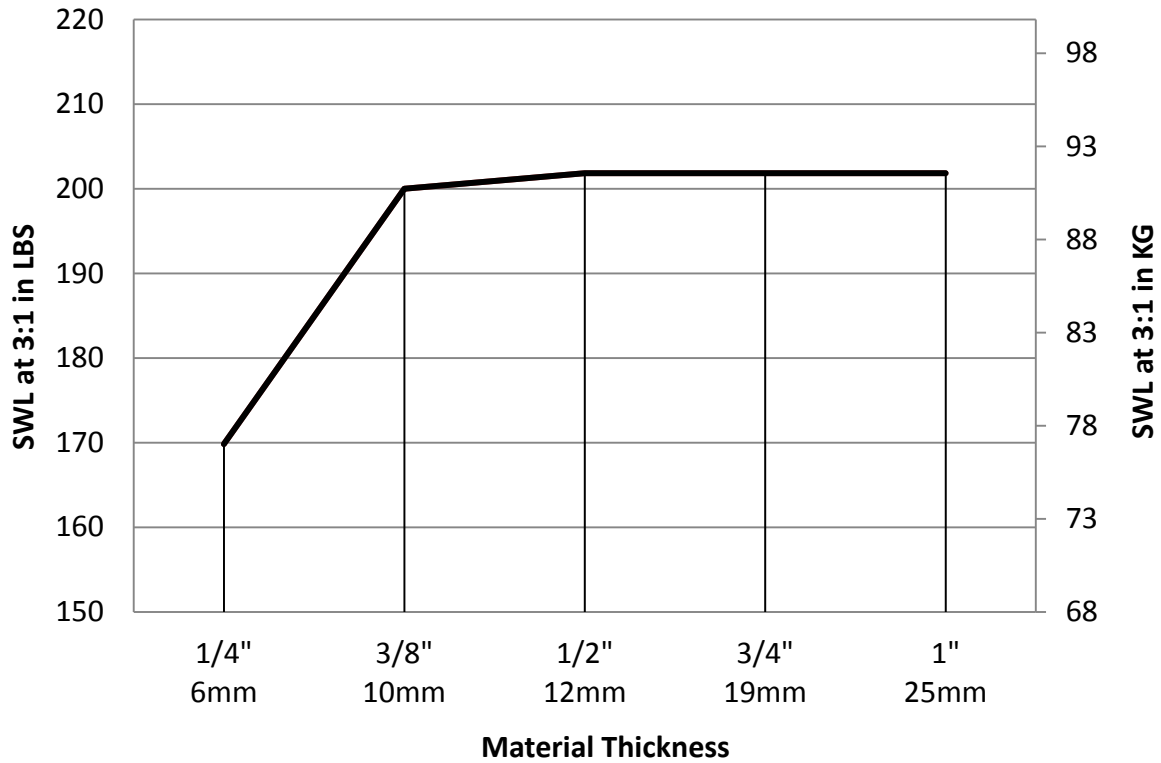
SPECIFICATIONS	
P/N: 8100089 - MAGSWITCH MLAY600	
Max Breakaway*	600 lbs/272 kg
Safe Working Load*	200 lbs/90 kg
Full Saturation Thickness	1/2" / 9.5mm
Max Safe Shear*	70 lbs/31.8 kg
Minimum Thickness for De-Stack	1/2" / 9.5mm
Net Weight	4.4 lbs/2.0 kg
Overall Height	184.0 mm
Magnetic Pole Footprint	75.0 x 51.5 mm



Part Number 110690
 Revision Date: June 26, 2012

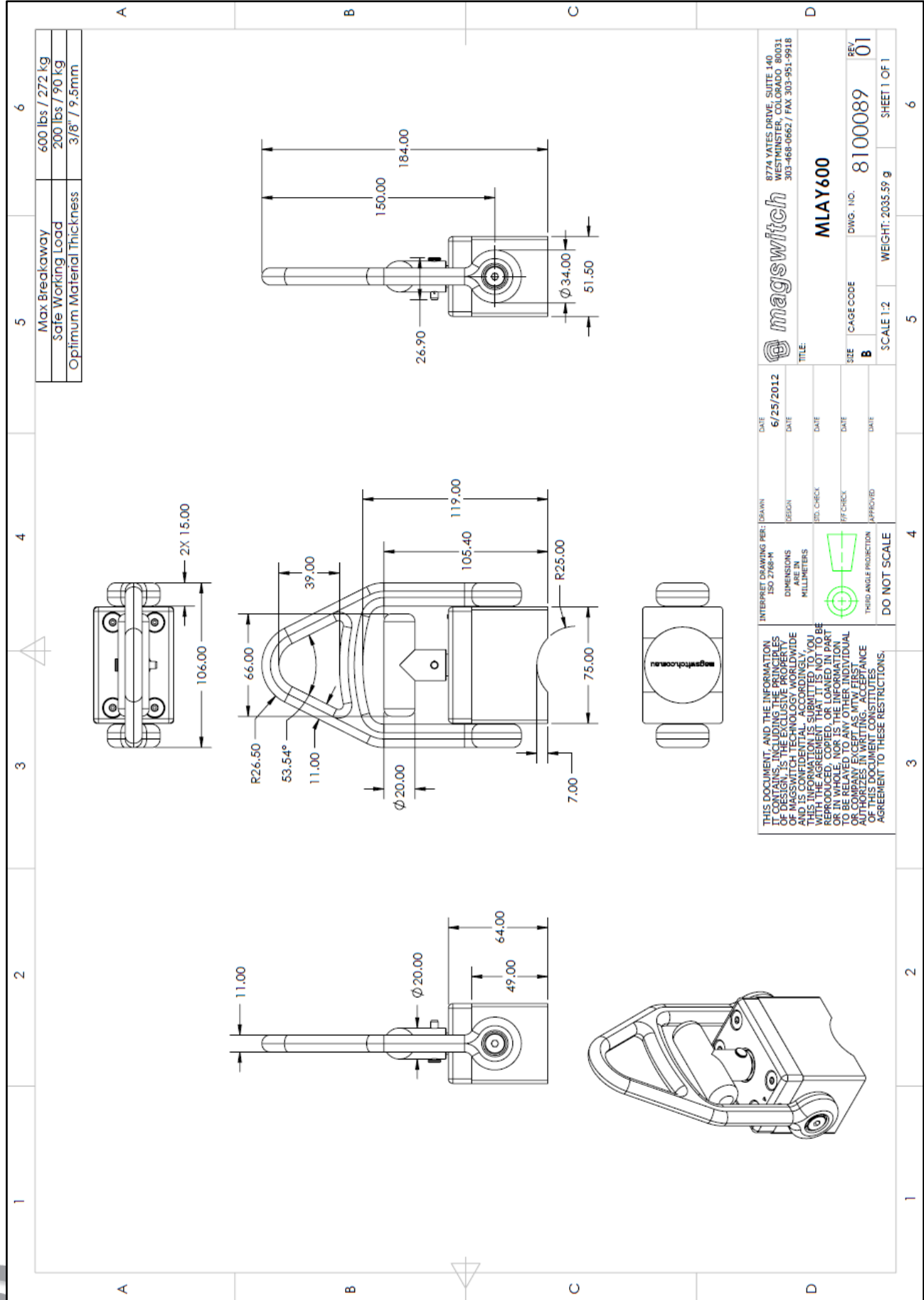
* Max Breakaway determined in laboratory environment on 2" thick SAE1018 Steel with surface roughness 63 micro inches. Many factors contribute to the actual breakaway force in each application. Always test the magswitch in each application before deployment. Refer to the magswitch information booklet for more information.

Magswitch MLAY600 Safe Working Load



Part Number 110690
Revision Date: June 26, 2012

* Max Breakaway determined in laboratory environment on 2" thick SAE1018 Steel with surface roughness 63 micro inches. Many factors contribute to the actual breakaway force in each application. Always test the magswitch in each application before deployment. Refer to the magswitch information booklet for more information.



Part Number 110690
 Revision Date: June 26, 2012