



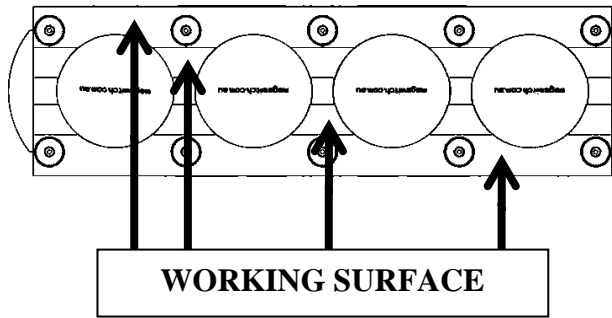
Magswitch Technology, Inc.
 8774 Yates Dr. Suite 140
 Westminster, CO 80031
 Magswitch.com.au
 303-468-0662

Magswitch MLAY1000x4

P/N: 8100418

Magswitch LAY series magnets utilize different size magnets to attain different field depths. This allows for greater working loads and increased control over larger work pieces. The MLAY1000x4 is a lightweight heavy lifting magnet ideal for lifting thick sheet, beams, pipe, and performs well on air gaps such as rust and dirt. It features a unique dual swivel hook design for both load stability and lifting from horizontal to vertical. With customizable pole shoes to fit almost any application, the LAY is a great all around tool that is perfect for picking pipe and round as well as large plate steel.

WARNING!
Do Not Operate Unless In
Contact With Ferrous Target

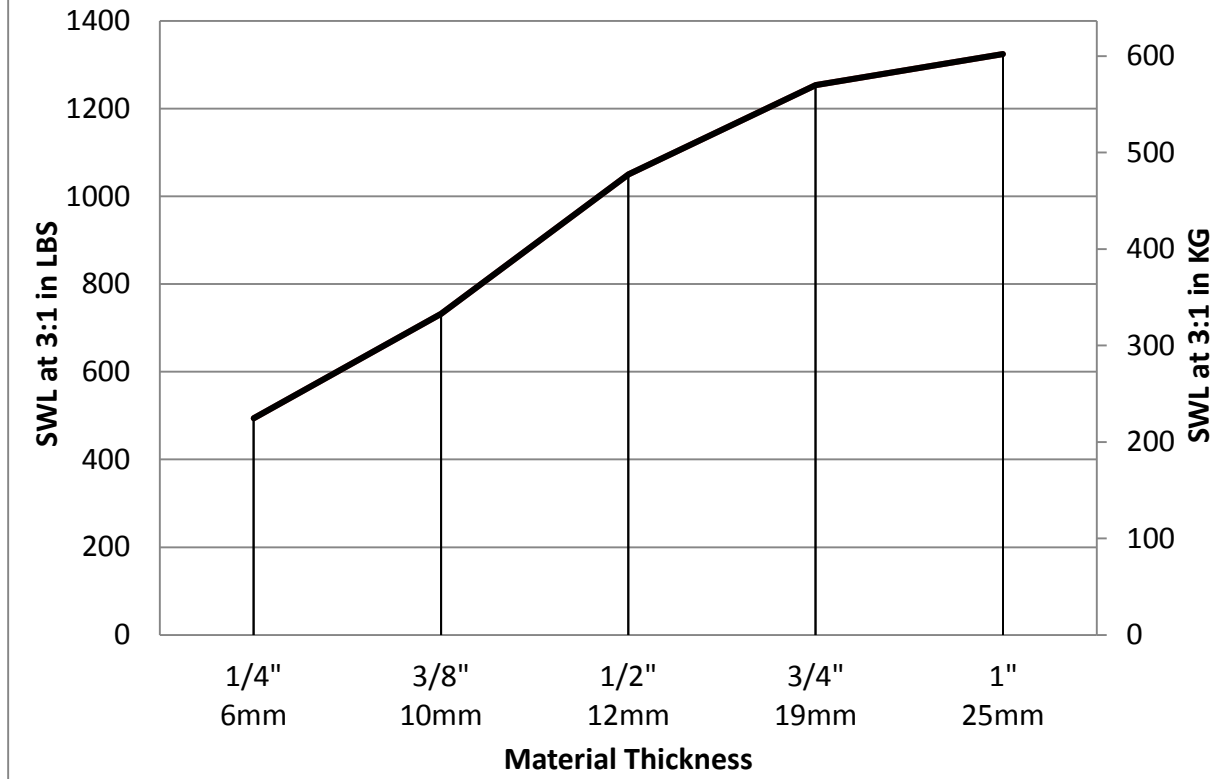


SPECIFICATIONS	
P/N: 8100418 - MAGSWITCH MLAY1000x4	
Max Breakaway*	3900 lbs/1773 kg
Safe Working Load*	1300 lbs/591 kg
Full Saturation Thickness	3/4" / 12.7mm
Max Safe Shear*	283 lbs/128.6 kg
Minimum Thickness for De-Stack	3/4" / 12.7mm
Net Weight	45.2 lbs/20.5 kg
Mounting Thread	M8x1.25
Overall Height	250.79 mm
Magnetic Pole Footprint	336.0x97.6 mm

* Max Breakaway determined in laboratory environment on 2" thick SAE1018 Steel with surface roughness 63 micro inches. Many factors contribute to the actual breakaway force in each application. Always test the magswitch in each application before deployment. Refer to the magswitch information booklet for more information.

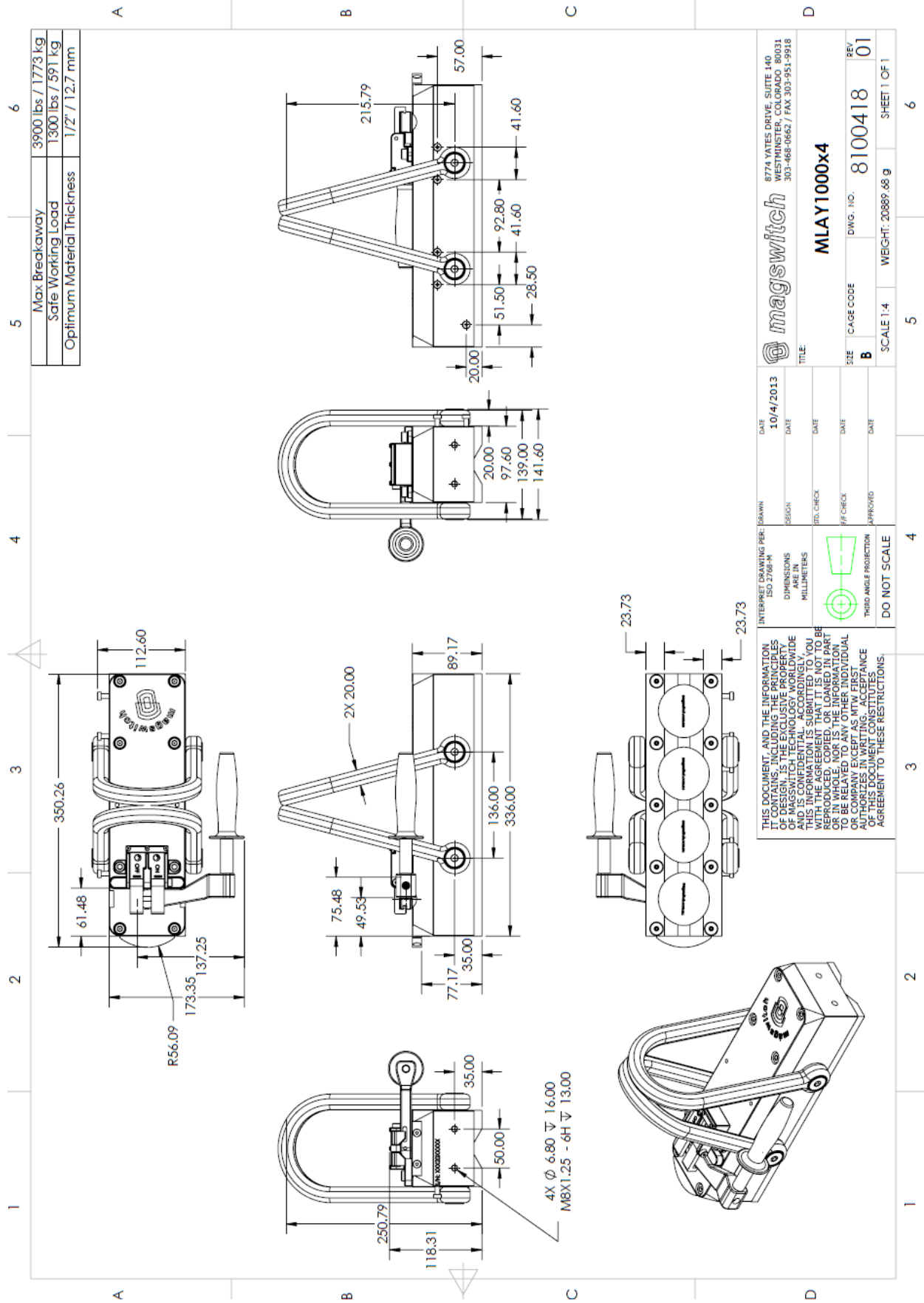


Magswitch MLAY1000x4 Safe Working Load



Part Number 110684
Revision Date: May 23, 2012

* Max Breakaway determined in laboratory environment on 2" thick SAE1018 Steel with surface roughness 63 micro inches. Many factors contribute to the actual breakaway force in each application. Always test the magswitch in each application before deployment. Refer to the magswitch information booklet for more information.



Part Number 110684
Revision Date: May 23, 2012