



Magswitch Technology, Inc.  
 8774 Yates Dr. Suite 140  
 Westminster, CO 80031  
 Magswitch.com.au  
 303-468-0662

# Magswitch MLAY1000x6

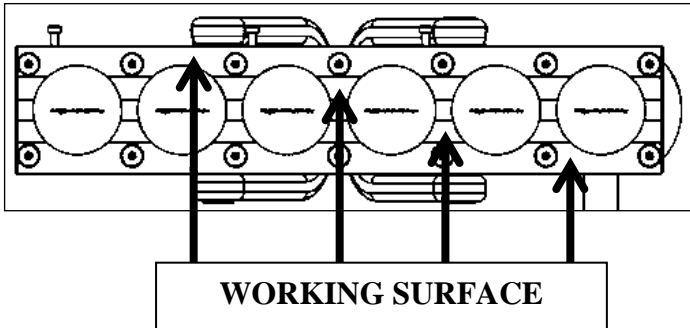
## P/N: 8100482

Magswitch LAY series magnets utilize different size magnets to attain different field depths. This allows for greater working loads and increased control over larger work pieces. The MLAY1000x6 is a lightweight heavy lifting magnet ideal for lifting large thick sheets, beams, pipe, and performs well on air gaps such as rust and dirt. It features a unique dual swivel hook design for both load stability and lifting from horizontal to vertical. With customizable pole shoes to fit almost any application, the LAY is a great all around tool that is perfect for picking pipe and round as well as large plate steel.



**WARNING!**  
**Do Not Operate Unless In**  
**Contact With Ferrous Target**

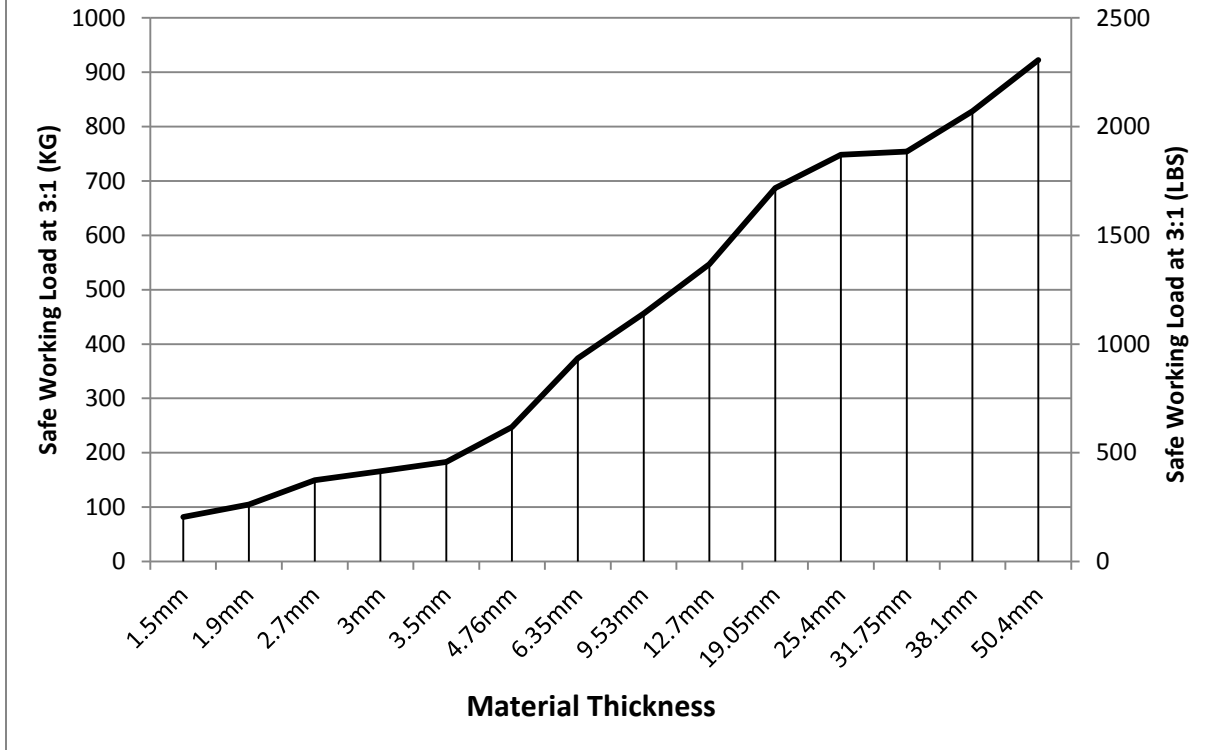
SPECIFICATIONS	
<b>P/N: 8100482 - MAGSWITCH MLAY1000x6</b>	
Max Breakaway*	6446 lbs/2930 kg
Safe Working Load*	2149 lbs/977 kg
Full Saturation Thickness	1" / 25.4mm
Max Safe Shear*	617 lbs/280.4 kg
Minimum Thickness for De-Stack	1" / 25.4mm
Net Weight	60.0 lbs/27.2 kg
Mounting Thread	M8x1.25
Overall Height	253.3 mm
Magnetic Pole Footprint	492.75x97.6 mm



Part Number 110685  
 Revision Date: August 27, 2013

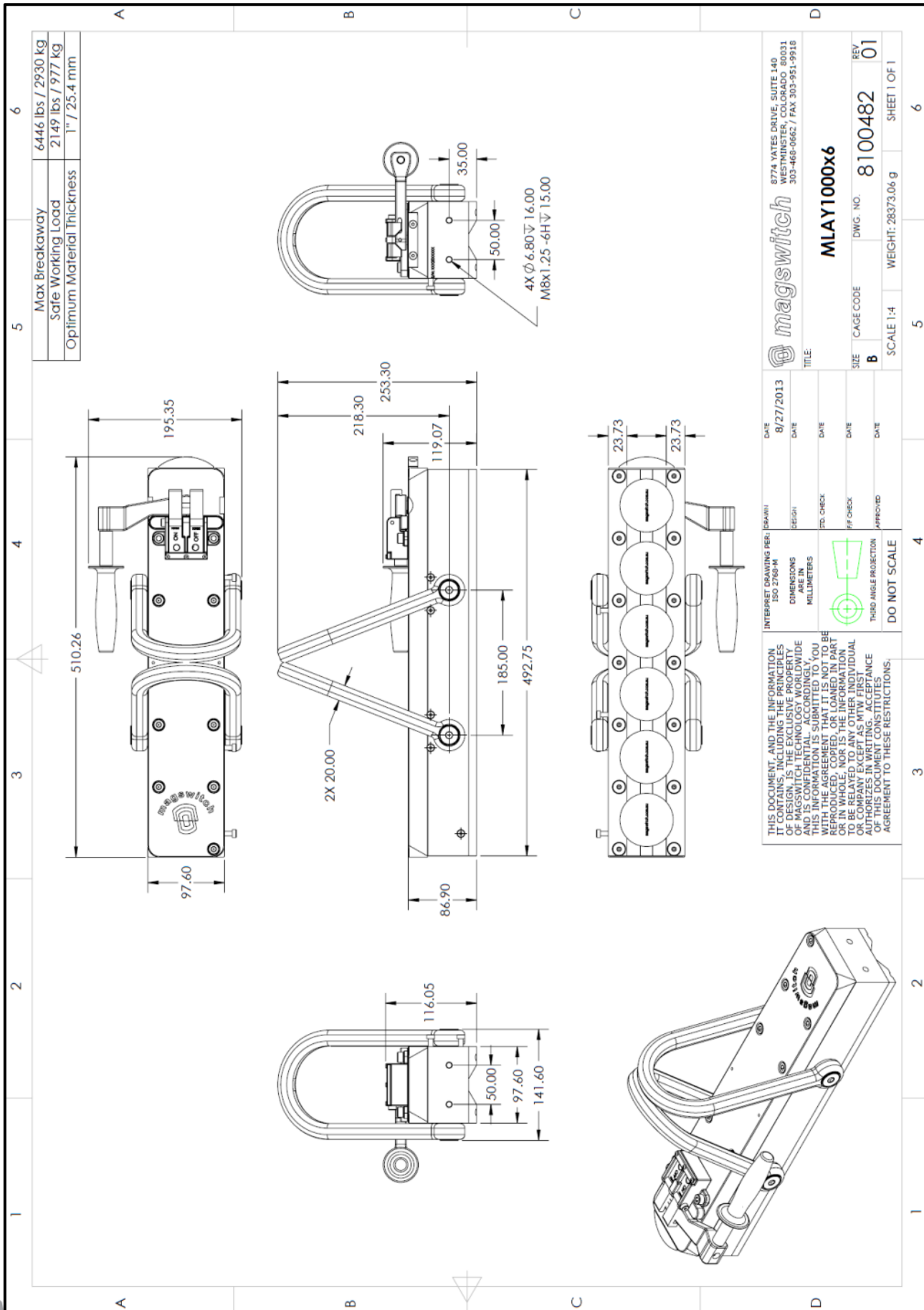
\* Max Breakaway determined in laboratory environment on 2" thick SAE1018 Steel with surface roughness 63 micro inches. Many factors contribute to the actual breakaway force in each application. Always test the magswitch in each application before deployment. Refer to the magswitch information booklet for more information.

### Magswitch MLAY1000x6 Safe Working Load



Part Number 110685  
Revision Date: August 27, 2013

\* Max Breakaway determined in laboratory environment on 2" thick SAE1018 Steel with surface roughness 63 micro inches. Many factors contribute to the actual breakaway force in each application. Always test the magswitch in each application before deployment. Refer to the magswitch information booklet for more information.



Max Breakaway	6446 lbs / 2930 kg
Safe Working Load	2149 lbs / 977 kg
Optimum Material Thickness	1" / 25.4 mm

<b>magswitch</b>		8774 YATES DRIVE, SUITE 140 MAGNUSVILLE, MO 64055 303-468-0662 / FAX 303-951-9910	
TITLE: <b>MLAY1000x6</b>			
SIZE	CAGE CODE	DWG. NO.	REV.
<b>B</b>		<b>8100482</b>	<b>01</b>
SCALE 1:4		WEIGHT: 28373.06 g	
5		6	

INTERPRET DRAWING PER: (P/ARI) DATE: 8/27/2013

ISO 2768-M DIMENSIONS ARE IN MILLIMETERS

THIRD ANGLE PROJECTION

DO NOT SCALE

THIS DOCUMENT AND THE INFORMATION IT CONTAINS, INCLUDING THE PRINCIPLES OF DESIGN, IS THE EXCLUSIVE PROPERTY OF MAGSWITCH TECHNOLOGY WORLDWIDE AND IS NOT TO BE REPRODUCED, COPIED, OR LOANED IN PART OR IN WHOLE, NOR IS THE INFORMATION TO BE DISCLOSED TO ANY INDIVIDUAL OR COMPANY EXCEPT AS WITH FIRST AUTHORIZED IN WRITING. ACCEPTANCE OF THIS DOCUMENT CONSTITUTES AGREEMENT TO THESE RESTRICTIONS.



Part Number 110685  
Revision Date: August 27, 2013