



Magswitch Technology, Inc.
 8774 Yates Dr. Suite 140
 Westminster, CO 80031
 Magswitch.com.au
 303-468-0662

Magswitch Mag Dolly

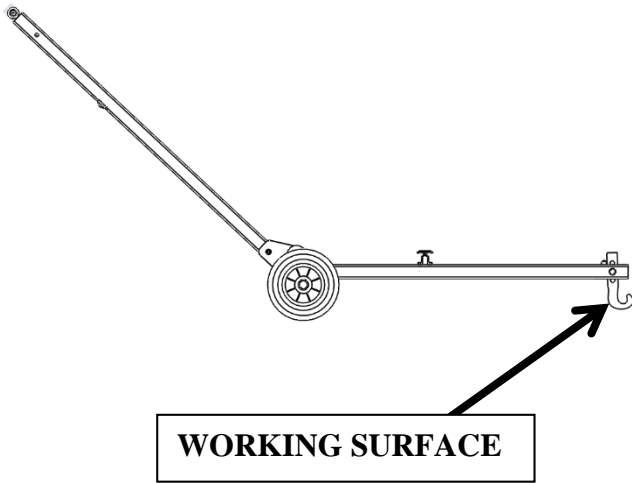
P/N: 8100433

Magswitch offers two tools for large sheet handling, the Sheet Handler and the Mag Dolly. The Sheet Handler enables you to pivot and lift a sheet up and onto a wheel so it can be dragged or moved. This is a perfect tool if you need to lift and slide one sheet over another. The Mag Dolly (#8100433) has large solid rubber wheels and can move larger sheets. The Mag Dolly is more suited to lift and carry sheet, pipe or any steel object over a greater distance.



WARNING!
Do Not Operate Unless In Contact With Ferrous Target

SPECIFICATIONS	
P/N: 8100433 - MAGSWITCH Mag Dolly	
Net Weight	46 lbs/21 kg
Overall Height	917 mm



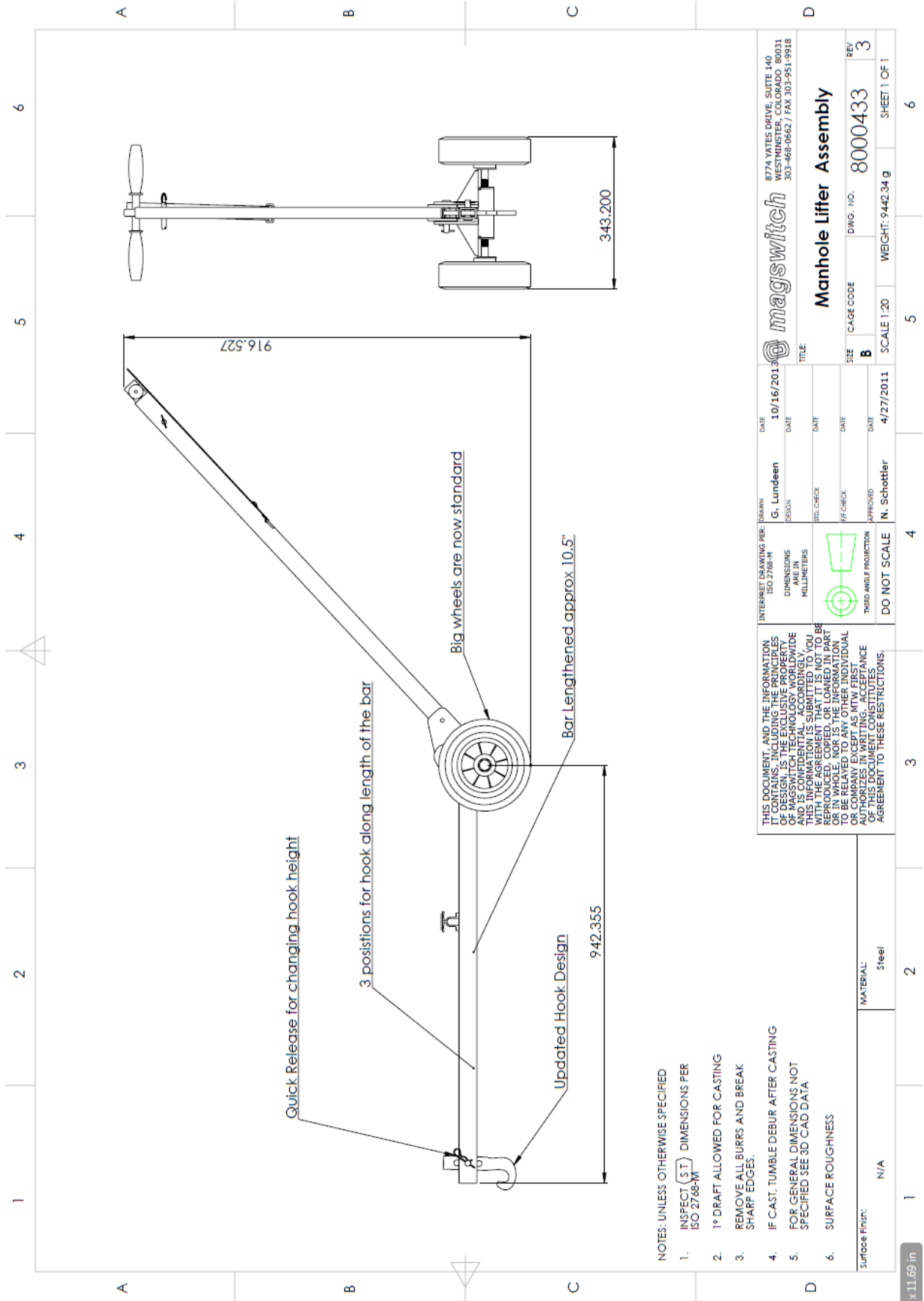
Part Number 110911
 Revision Date: February 10, 2012

* Max Breakaway determined in laboratory environment on 2" thick SAE1018 Steel with surface roughness 63 micro inches. Many factors contribute to the actual breakaway force in each application. Always test the magswitch in each application before deployment. Refer to the magswitch information booklet for more information.



Part Number 110911
 Revision Date: February 10, 2012

* Max Breakaway determined in laboratory environment on 2" thick SAE1018 Steel with surface roughness 63 micro inches. Many factors contribute to the actual breakaway force in each application. Always test the magswitch in each application before deployment. Refer to the magswitch information booklet for more information.



- NOTES: UNLESS OTHERWISE SPECIFIED
1. INSPECT (S.T) DIMENSIONS PER ISO 2768-M
 2. 1° DRAFT ALLOWED FOR CASTING
 3. REMOVE ALL BURRS AND BREAK SHARP EDGES.
 4. IF CAST, TUMBLE DEBUR AFTER CASTING
 5. FOR GENERAL DIMENSIONS NOT SPECIFIED SEE 3D CAD DATA
 6. SURFACE ROUGHNESS

Surface Finish: N/A

MATERIAL: Steel

INTERPRET DRAWING PER: ISO 2768-M DIMENSIONS ARE IN MILLIMETERS		DATE: 10/16/2013 DRAWN: G. Lundeen	DATE: 4/27/2011 APPROVED: N. Schottler
THIS DOCUMENT, AND THE INFORMATION IT CONTAINS, INCLUDING THE PRINCIPLES OF DESIGN, IS THE EXCLUSIVE PROPERTY OF MAGSWITCH AND IS CONFIDENTIAL. THIS INFORMATION IS SUBMITTED TO YOU WITH THE AGREEMENT THAT IT IS NOT TO BE REPRODUCED, COPIED, OR TRANSMITTED IN ANY MANNER WITHOUT THE WRITTEN AGREEMENT OF MAGSWITCH. THIS DOCUMENT CONSTITUTES AN AGREEMENT TO THESE RESTRICTIONS.		DATE: 10/16/2013 DESIGN: G. Lundeen	DATE: 4/27/2011 APPROVED: N. Schottler
THIRD ANGLE PROJECTION DO NOT SCALE		STD. CHECK DATE:	DATE: 4/27/2011 APPROVED: N. Schottler
TITLE: Manhole Lifter Assembly		SEE: B	SCALE: 1:20
DWG. NO.: 8000433		WEIGHT: 9.442.34 g	SHEET 1 OF 1

x11.69 in