



Magswitch Technology, Inc.
1355 Horizon Avenue
Lafayette, Colorado 80026
Magswitch.com.au
303-468-0662

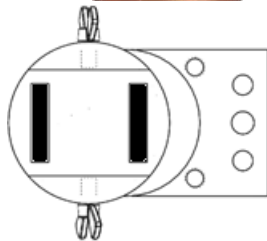
Magswitch AR30 Laser Fixture Tool

P/N: 8140788

Magswitch “AR” series is explicitly designed for use with pole shoes. Pole shoes must be attached to the unit in order to maximize breakaway force and minimize residual magnetism. Each Magswitch “AR” unit comes equipped with one set of dual purpose pole shoes for flat or pipe/round stock. Simply flip the pole shoes around so the V shape is exposed for use on pipe and other rounds. The “AR” series allows complete customization of pole shapes to provide the best hold on your hard to grip parts. The copper shield will protect the unit from any welding slag.

Note: You may have to design and fabricate custom pole shoes depending on your application for optimal performance.

WARNING!
**Do Not Operate Unless In
Contact With Ferrous Target**



WORKING SURFACE
BLACK = BEST
GRAY=MODERATE

SPECIFICATIONS

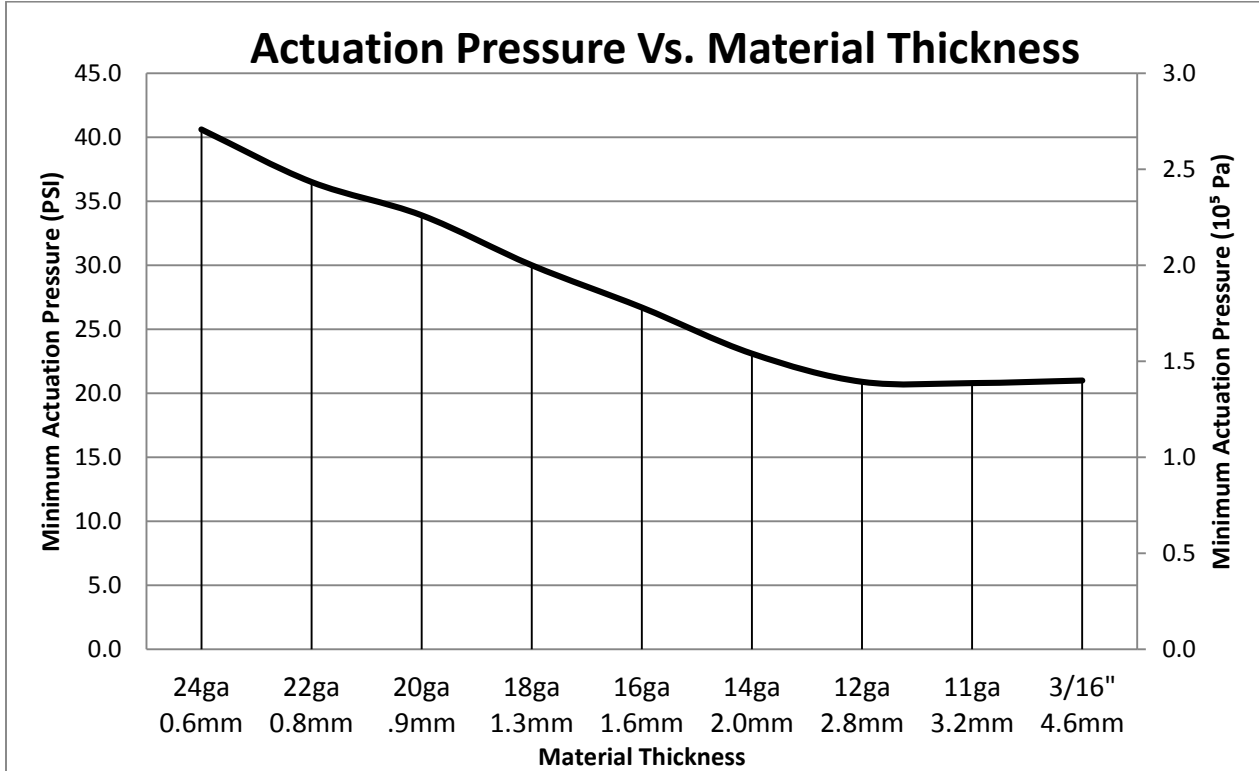
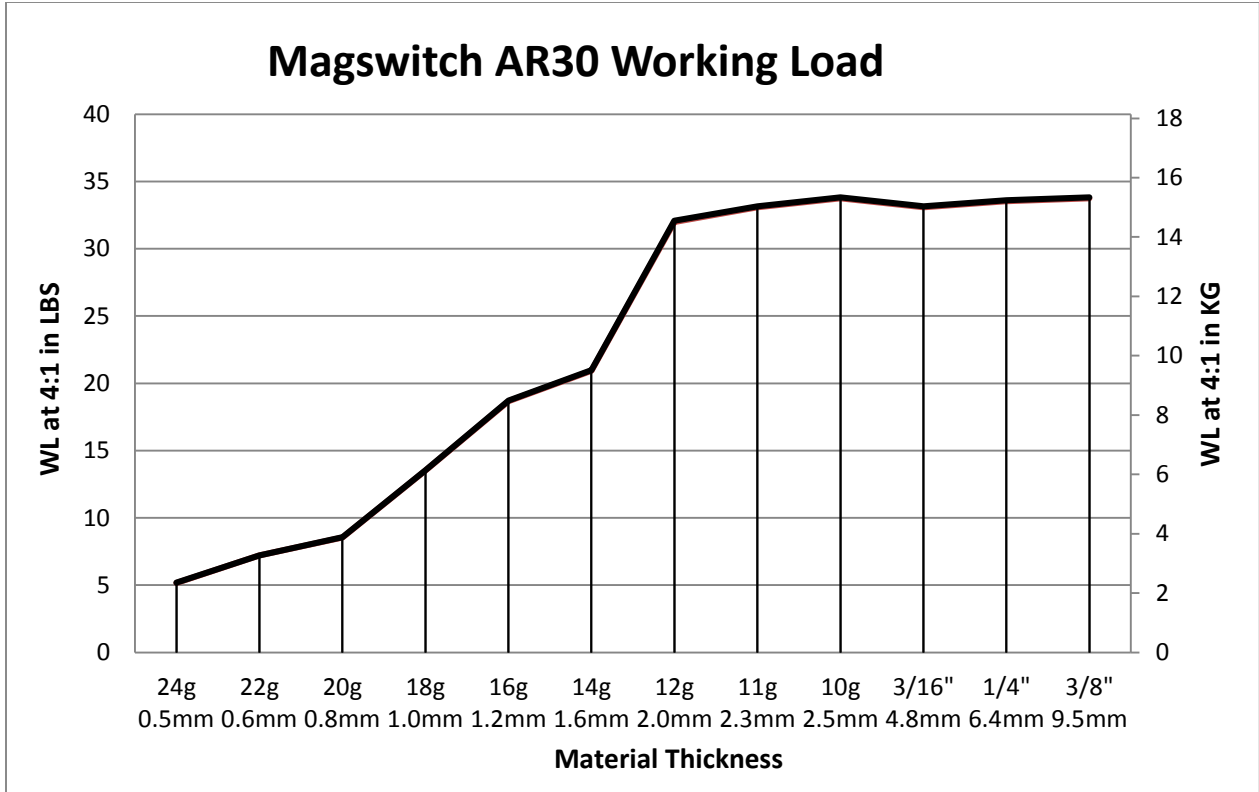
P/N: 8140788 - MAGSWITCH AR30 Laser Fixture Tool

Max Breakaway*	134 lbs/60.9 kg
Working Load 4:1*	33.5 lbs/15.2 kg
Full Saturation Thickness	10 ga/3.5 mm
Max Shear 2:1*	15 lbs/6.8 kg
Minimum Thickness for De-Stack	10 ga/3.5 mm
Min Actuation Pressure	21 psi/1.45x10 ⁵ pa
Max Actuation Pressure	100 psi/6.9x10 ⁵ pa
Off Target Actuation Pressure	48 psi/3.3x10 ⁵ pa
Net Weight	2.42 lbs/1.1 kg
Air Port Thread	M5x0.8
Mounting Thread	2-8mm Dowel / 1-M8 Clearance Hole
Overall Height	145 mm
Magnetic Pole Footprint	36x31.2 mm

* Max Breakaway determined in laboratory environment on 2" thick SAE1018 Steel with surface roughness 63 micro inches. Many factors contribute to the actual breakaway force in each application. Always test the magswitch in each application before deployment. Refer to the magswitch information booklet for more information.

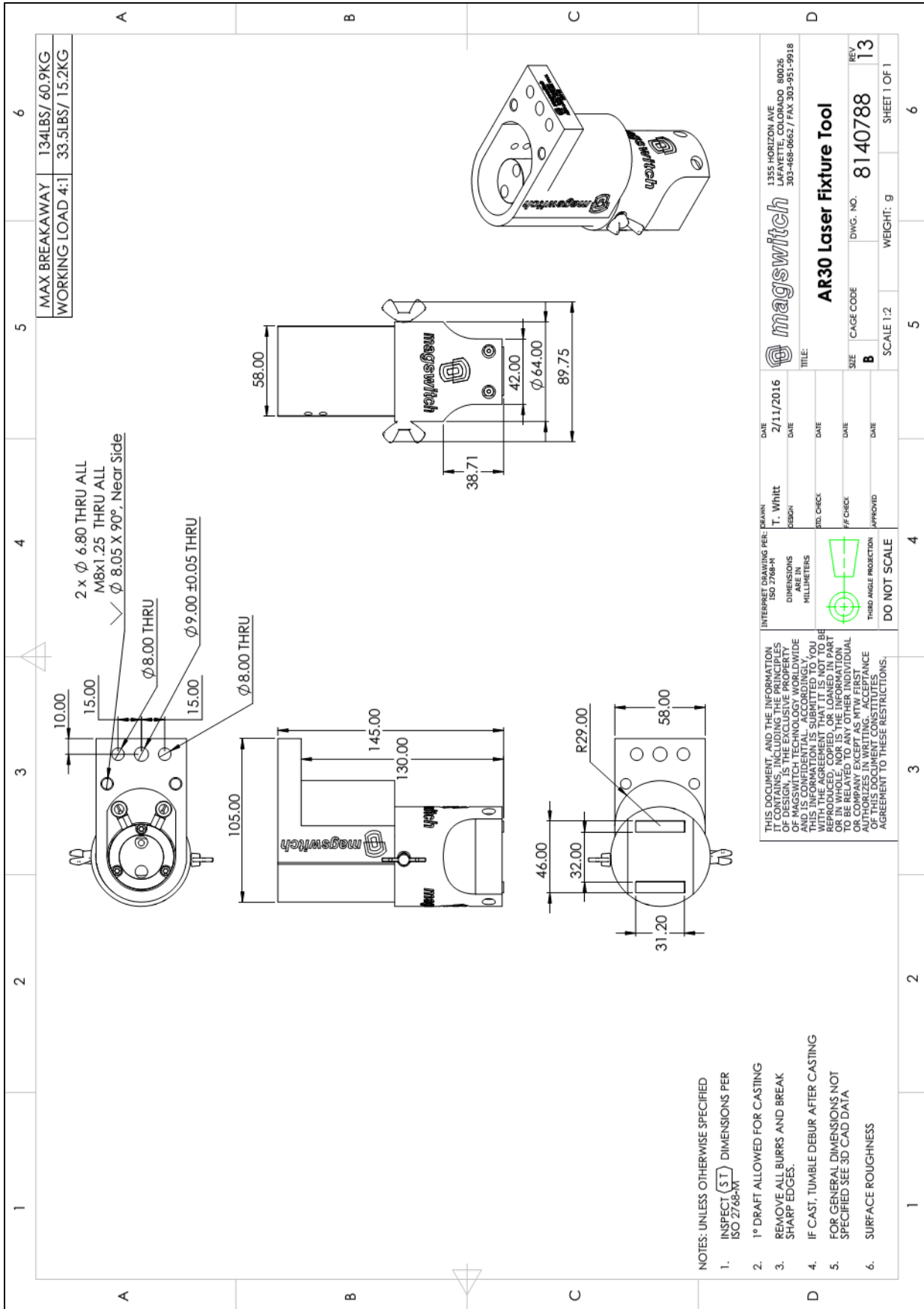


Part Number 1101060
Revision Date: February 11, 2016



Part Number 1101060
 Revision Date: February 11, 2016

* Max Breakaway determined in laboratory environment on 2" thick SAE1018 Steel with surface roughness 63 micro inches. Many factors contribute to the actual breakaway force in each application. Always test the magswitch in each application before deployment. Refer to the magswitch information booklet for more information.



- NOTES: UNLESS OTHERWISE SPECIFIED
1. INSPECT (ST) DIMENSIONS PER ISO 2768-MT
 2. 1° DRAFT ALLOWED FOR CASTING
 3. REMOVE ALL BURRS AND BREAK SHARP EDGES.
 4. IF CAST, TUMBLE DEBUR AFTER CASTING
 5. FOR GENERAL DIMENSIONS NOT SPECIFIED SEE 3D CAD DATA
 6. SURFACE ROUGHNESS



Part Number 1101060
 Revision Date: February 11, 2016