



Magswitch Technology, Inc.
 1355 Horizon Ave
 Lafayette, CO 80026
 Magswitch.com.au
 303-468-0662

Magswitch HLF-8000-M Three Ton P/N: 8800432

If you lift pipe, I-beams or heavy sheet steel, this is a tool you need in your shop! Magswitch Technology is “changing the way things are done” once again by introducing the innovative new Heavy Lift Frame Series. This game-changing tool utilizes patented Magswitch Technology to lift a single sheet from a stack of 3/4 in (19.05 mm) material. Enhanced workplace safety is achieved through fail safe operation. Increased strength, efficiency and durability make tough jobs easy. By providing unique magnetic solutions for new standards of productivity, one man can easily do the work of two. Safely lift up to 8,000 lbs of pipe, beam or flat sheet... experience Magswitch Technology today!

WARNING!
**Do Not Operate Unless In
 Contact With Ferrous Target**



SPECIFICATIONS

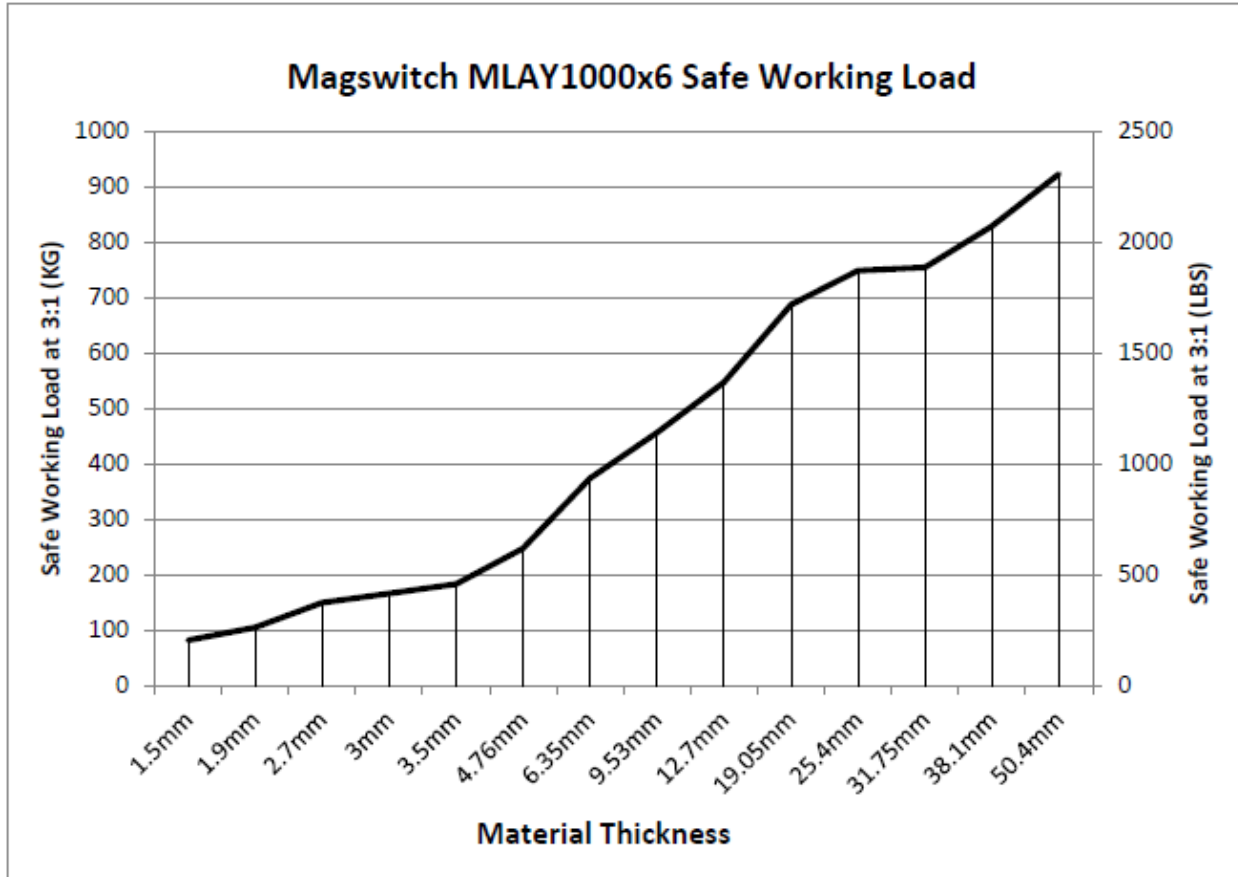
P/N: 8800432 – HLF-8000-M Three Ton

Max SWL 3:1 Lift Capacity*	6,000 lbs/2727 kg
Minimum De-Stack Thickness	0.75" / 19.05mm
Magnet Specification	MLAY1000x6
Quantity of Magnets	3
Frame Length	116" / 2.94m
Frame Width	30.5" / 0.78m
Frame Height	22.5" / 0.571m
Net Weight	460 lbs/208.7 kg
Frame Lifting Locations	Under Hook and Fork Pockets Available



Part Number 110692
 Revision Date: May 12, 2015

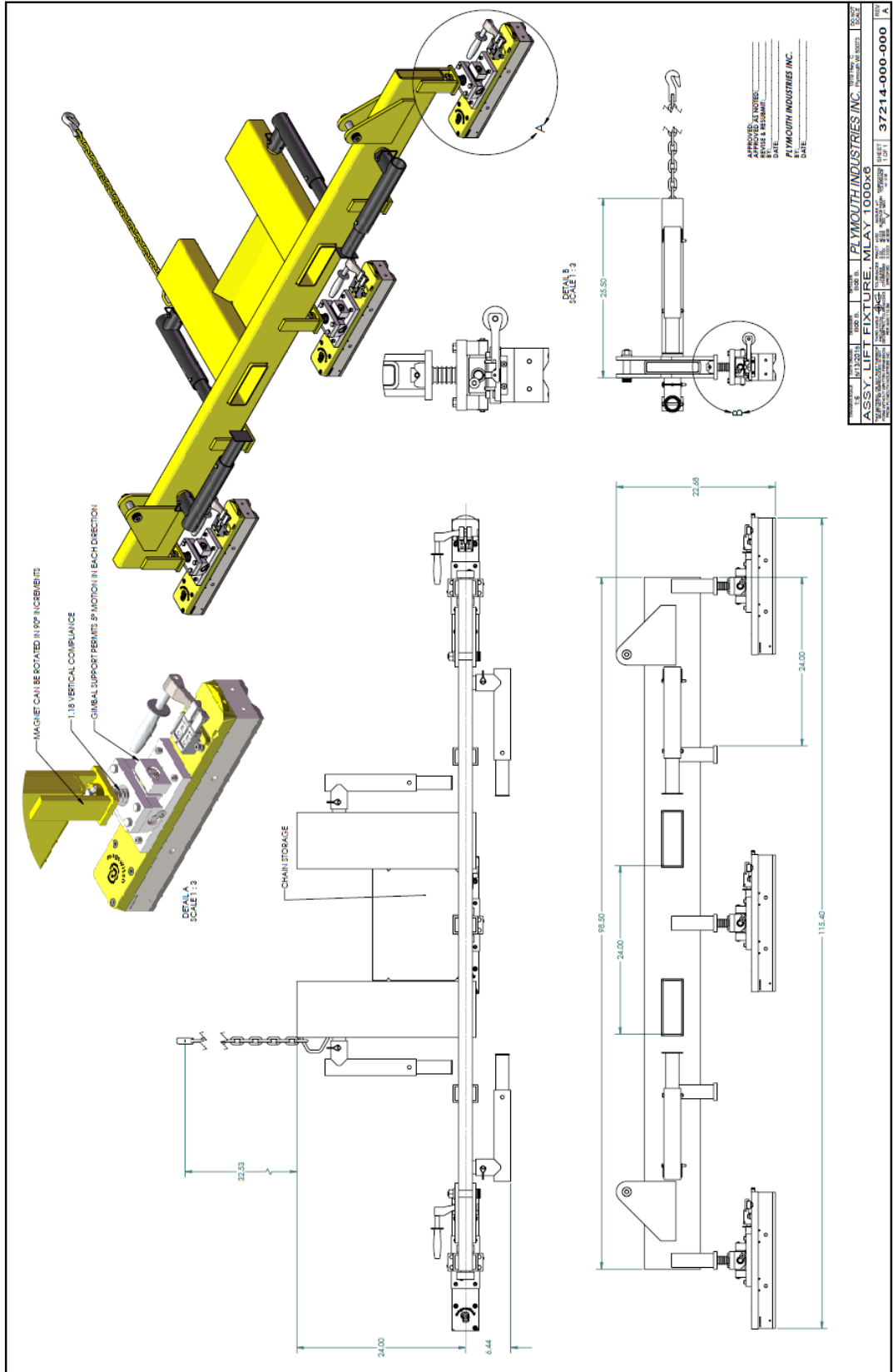
* Max Breakaway determined in laboratory environment on 2" thick SAE1018 Steel with surface roughness 63 micro inches. Many factors contribute to the actual breakaway force in each application. Always test the magswitch in each application before deployment. Refer to the magswitch information booklet for more information.



Note: Graph above shows performance of single tool. Heavy Lift Frame Series utilizes multiple magnets so consider number of tools when determining the capability of the tool.



Part Number 110692
Revision Date: May 12, 2015



APPROVED AS NOTED:
 DESIGN & DRAWING:
 DATE: _____
 PLYMOUTH INDUSTRIES INC.

U.S.	REV. 1	REV. 2	REV. 3	REV. 4	REV. 5	REV. 6	REV. 7	REV. 8	REV. 9	REV. 10	REV. 11	REV. 12	REV. 13	REV. 14	REV. 15	REV. 16	REV. 17	REV. 18	REV. 19	REV. 20	REV. 21	REV. 22	REV. 23	REV. 24	REV. 25	REV. 26	REV. 27	REV. 28	REV. 29	REV. 30	REV. 31	REV. 32	REV. 33	REV. 34	REV. 35	REV. 36	REV. 37	REV. 38	REV. 39	REV. 40	REV. 41	REV. 42	REV. 43	REV. 44	REV. 45	REV. 46	REV. 47	REV. 48	REV. 49	REV. 50	REV. 51	REV. 52	REV. 53	REV. 54	REV. 55	REV. 56	REV. 57	REV. 58	REV. 59	REV. 60	REV. 61	REV. 62	REV. 63	REV. 64	REV. 65	REV. 66	REV. 67	REV. 68	REV. 69	REV. 70	REV. 71	REV. 72	REV. 73	REV. 74	REV. 75	REV. 76	REV. 77	REV. 78	REV. 79	REV. 80	REV. 81	REV. 82	REV. 83	REV. 84	REV. 85	REV. 86	REV. 87	REV. 88	REV. 89	REV. 90	REV. 91	REV. 92	REV. 93	REV. 94	REV. 95	REV. 96	REV. 97	REV. 98	REV. 99	REV. 100
										PLYMOUTH INDUSTRIES INC.										ASSY. LIFT FIXTURE, MLAY, 1000X6																																																																																
										DATE: _____										37214-000-000																																																																																



Part Number 110692
 Revision Date: May 12, 2015

* Max Breakaway determined in laboratory environment on 2" thick SAE1018 Steel with surface roughness 63 micro inches. Many factors contribute to the actual breakaway force in each application. Always test the magswitch in each application before deployment. Refer to the magswitch information booklet for more information.