



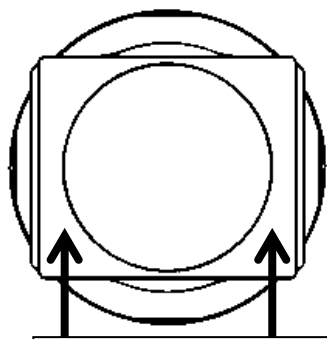
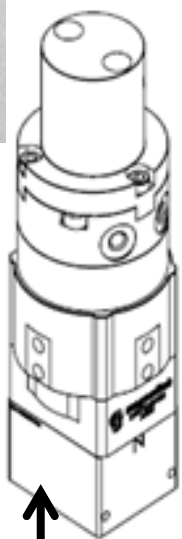
Magswitch Technology, Inc.
8774 Yates Dr. Suite 140
Westminster, CO 80031
Magswitch.com.au
303-468-0662

Magswitch AR30 Classic (AR30-HDC) P/N: 8140480

Magswitch “AR” series is explicitly designed for use with pole shoes. Pole shoes must be attached to the unit in order to maximize breakaway force and minimize residual magnetism. Each Magswitch “AR” unit comes equipped with one set of dual purpose pole shoes for flat or pipe/round stock. Simply flip the pole shoes around so the V shape is exposed for use on pipe and other rounds. The “AR” series allows complete customization of pole shapes to provide the best hold on your hard to grip parts.

Note: You may have to design and fabricate custom pole shoes depending on your application for optimal performance.

WARNING!
**Do Not Operate Unless In
Contact With Ferrous Target**



WORKING SURFACE

SPECIFICATIONS

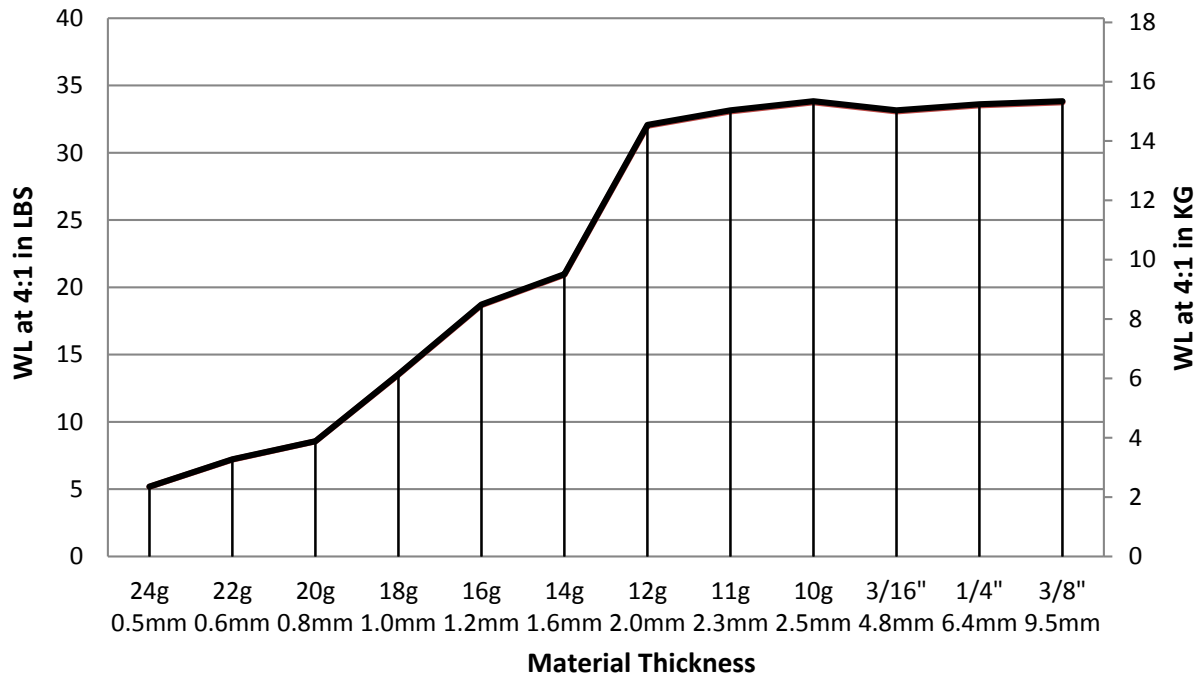
P/N: 8140480 - MAGSWITCH AR30 Classic

Max Breakaway*	134 lbs/60.9 kg
Working Load 4:1*	33.5 lbs/15.2 kg
Full Saturation Thickness	10 ga/3.5 mm
Max Shear 2:1*	15 lbs/6.8 kg
Minimum Thickness for De-Stack	10 ga/3.5 mm
Min Actuation Pressure	21 psi/1.45x10 ⁵ pa
Max Actuation Pressure	100 psi/6.9x10 ⁵ pa
Off Target Actuation Pressure	48 psi/3.3x10 ⁵ pa
Net Weight	0.88 lbs/0.4 kg
Air Port Thread	M5x0.8
Mounting Thread	M4x0.7
Overall Height	131 mm
Magnetic Pole Footprint	36x31.2 mm

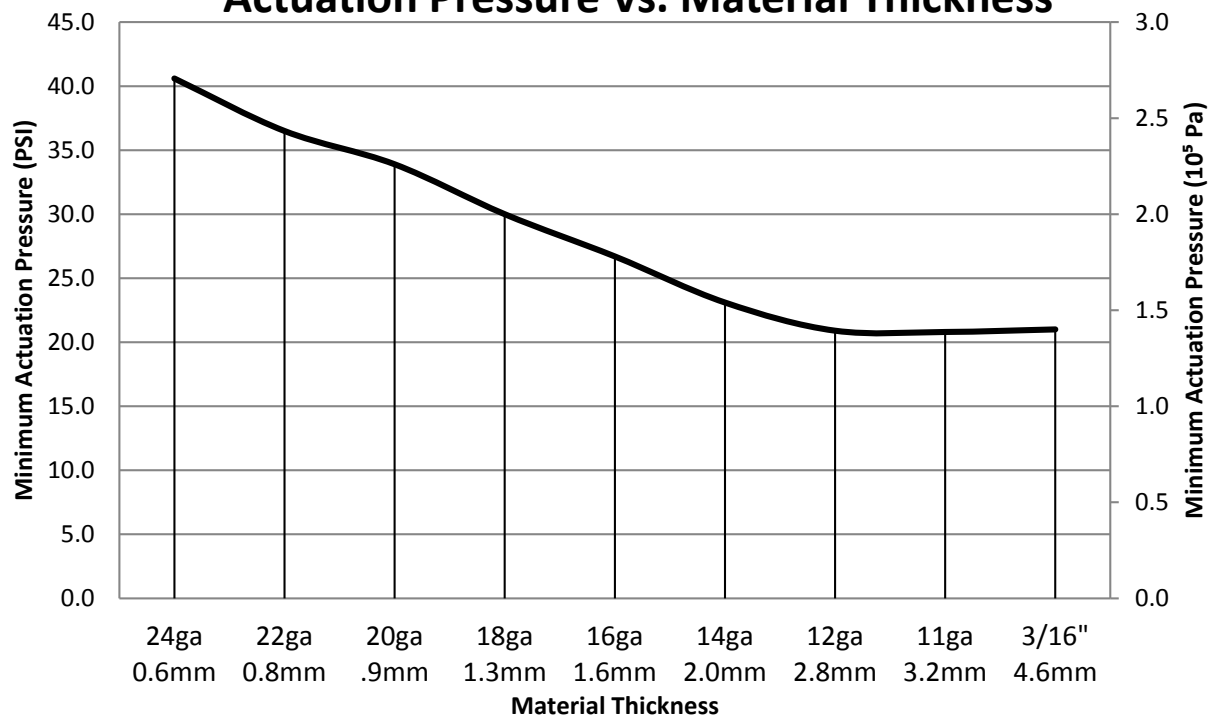
Part Number 110631
Revision Date: 11/11/2014

* Max Breakaway determined in laboratory environment on 2" thick SAE1018 Steel with surface roughness 63 micro inches. Many factors contribute to the actual breakaway force in each application. Always test the magswitch in each application before deployment. Refer to the magswitch information booklet for more information.

Magswitch AR30 Classic Working Load

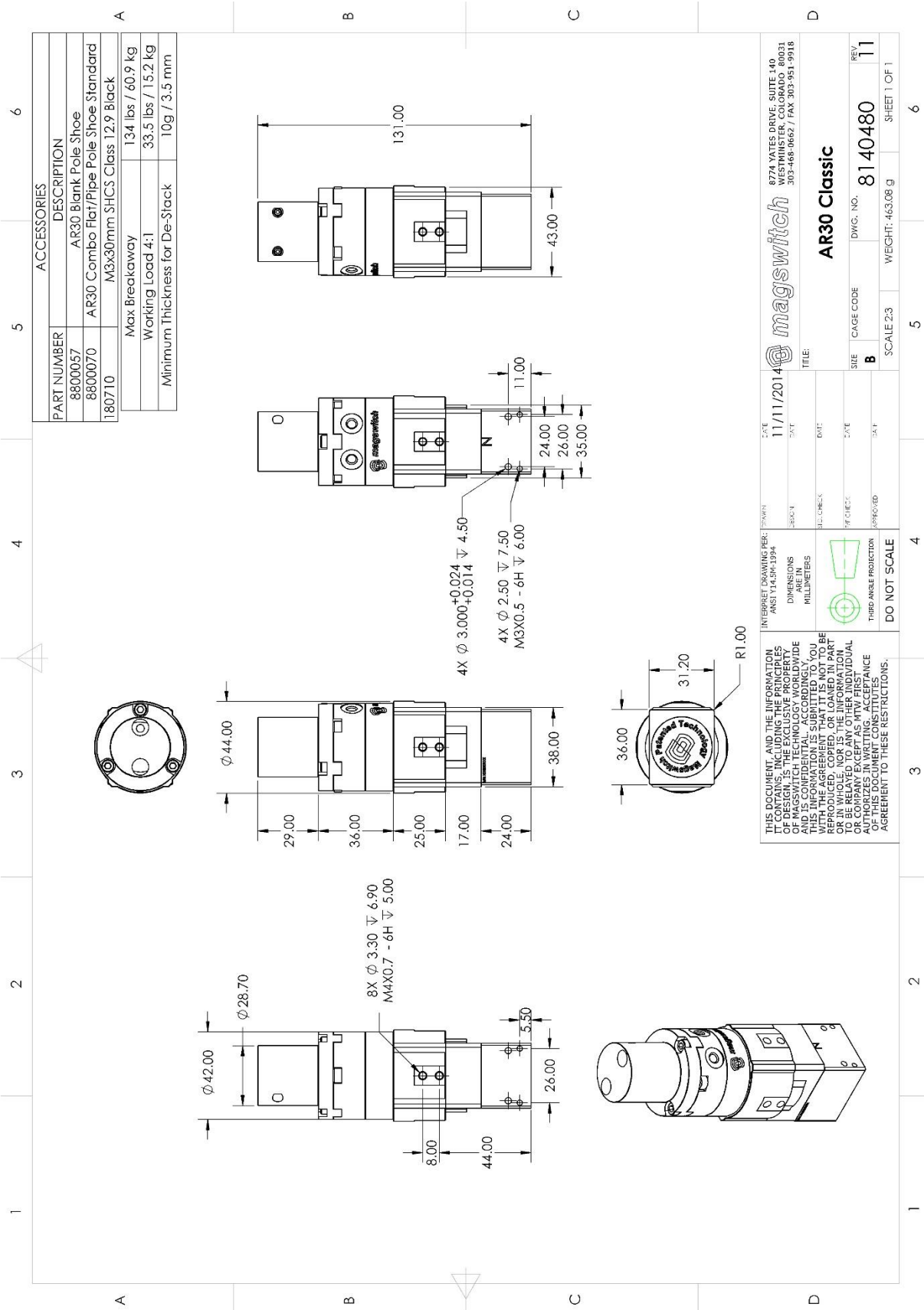


Actuation Pressure Vs. Material Thickness



Part Number 110631
Revision Date: 11/11/2014

* Max Breakaway determined in laboratory environment on 2" thick SAE1018 Steel with surface roughness 63 micro inches. Many factors contribute to the actual breakaway force in each application. Always test the magswitch in each application before deployment. Refer to the magswitch information booklet for more information.



Part Number 110631
Revision Date: 11/11/2014