

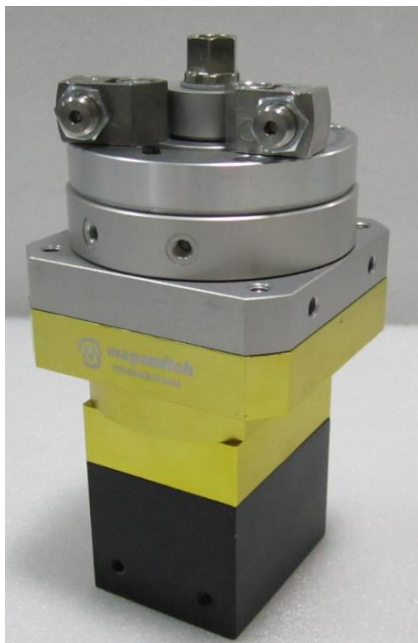


Magswitch Technology, Inc.
8774 Yates Dr. Suite 140
Westminster, CO 80031
Magswitch.com.au
303-468-0662

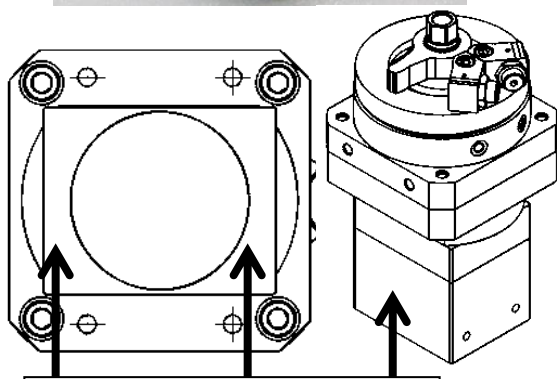
Magswitch AR50 Classic (AR50-HDC) P/N: 8140319

Magswitch “AR” series is explicitly designed for use with pole shoes. Pole shoes must be attached to the unit in order to maximize breakaway force and minimize residual magnetism. Each Magswitch “AR” unit comes equipped with one set of dual purpose pole shoes for flat or pipe/round stock. Simply flip the pole shoes around so the V shape is exposed for use on pipe and other rounds. The “AR” series allows complete customization of pole shapes to provide the best hold on your hard to grip parts.

Note: You may have to design and fabricate custom pole shoes depending on your application for optimal performance.



WARNING!
**Do Not Operate Unless In
Contact With Ferrous Target**



WORKING SURFACE

SPECIFICATIONS

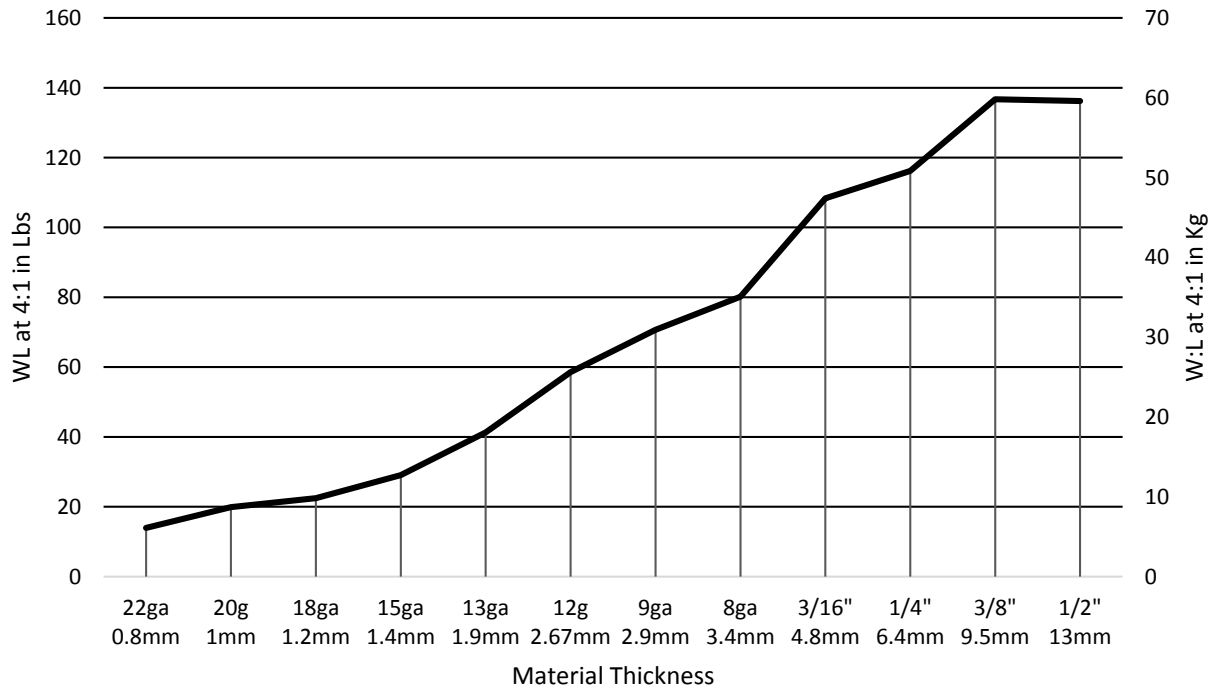
P/N: 8140319 - MAGSWITCH AR50 Classic

Max Breakaway*	548 lbs/248.6 kg
Safe Working Load*	137 lbs/62.1 kg
Full Saturation Thickness	3/8" / 9.5 mm
Max Safe Shear*	68 lbs/30.8 kg
Minimum Thickness for De-Stack	3/8" / 9.5 mm
Min Actuation Pressure	25psi / 1.7x10 ⁵ pa
Max Actuation Pressure	145 psi / 1x10 ⁶ pa
Net Weight	4.4 lbs / 2.0 kg
Air Port Thread	M5x0.8
Mounting Thread	M6x1.0
Overall Height	166.5 mm
Magnetic Pole Footprint	64x51.75 mm

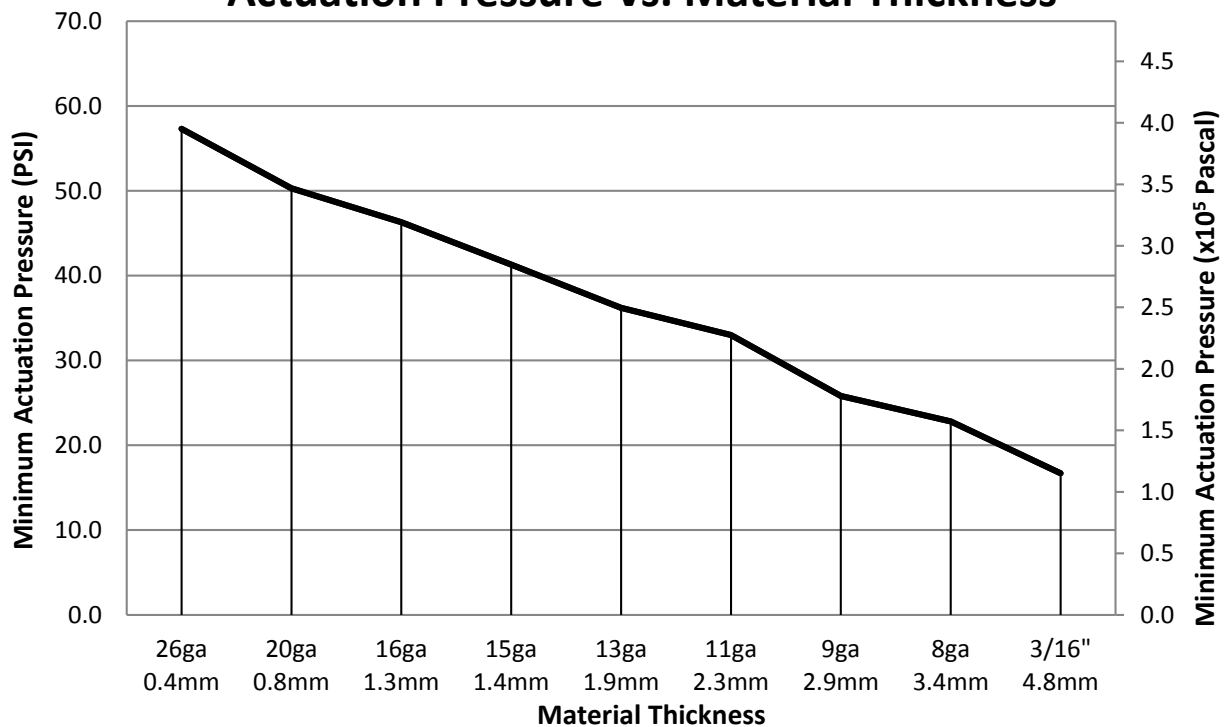
Part Number 110632
Revision Date: 11/11/2014

* Max Breakaway determined in laboratory environment on 2" thick SAE1018 Steel with surface roughness 63 micro inches. Many factors contribute to the actual breakaway force in each application. Always test the magswitch in each application before deployment. Refer to the magswitch information booklet for more information.

Magswitch AR50 Working Load



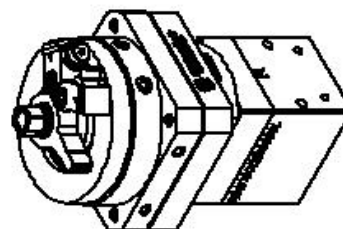
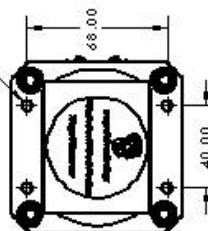
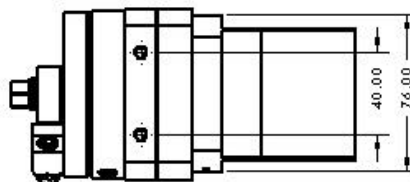
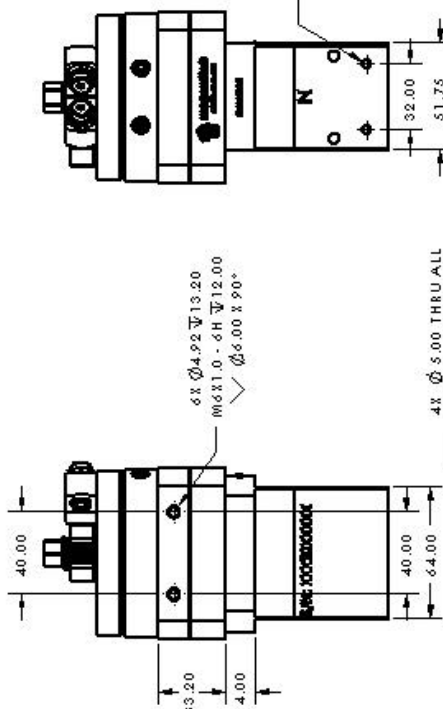
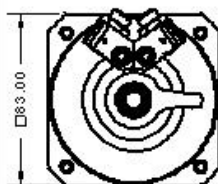
Actuation Pressure Vs. Material Thickness



Part Number 110632
Revision Date: 11/11/2014

* Max Breakaway determined in laboratory environment on 2" thick SAE1018 Steel with surface roughness 63 micro inches. Many factors contribute to the actual breakaway force in each application. Always test the magswitch in each application before deployment. Refer to the magswitch information booklet for more information.

8800038	ARSO BLANK POLE SHOE
---------	----------------------



THIS DOCUMENT AND THE INFORMATION IT CONTAINS INCLUDES THE PRINCIPLES OF HANSWITCH TECHNOLOGY WORLDWIDE AND IS CONFIDENTIAL, ACCORDINGLY, IT IS NOT TO BE REPRODUCED, COPIED OR LOANED IN PART OR IN WHOLE, NOR IS THE INFORMATION TO BE DISCLOSED TO ANY OTHER PERSON OR COMPANY EXCEPT AS HERE FIRST AUTHORIZED IN WRITING. ACCEPTANCE OF THESE INSTITUTIONS CONSTITUTES AGREEMENT TO THESE RESTRICTIONS.					
INTERNET DRAWING FILE: \$A\$-M	\$A\$	DATE: 01/11/2011	MAGSWITCH	3730 VATES DRIVE, SUITE 140 WESTMINSTER, COLORADO 80031 303-688-0662 / FAX: 303-951-9918	
ASSEMBLY SHEET:	\$B\$	DATE:			
OPENINGS:	\$C\$	DATE:			
HOLE PATTERN:	\$D\$	DATE:			
	\$E\$	DATE:			
THIRD ANGLE PROJECTION	\$F\$	DATE:			
DO NOT SCALE	\$G\$	DATE:			