



Magswitch Technology, Inc.
 8774 Yates Dr. Suite 140
 Westminster, CO 80031
 Magswitch.com.au
 303-468-0662

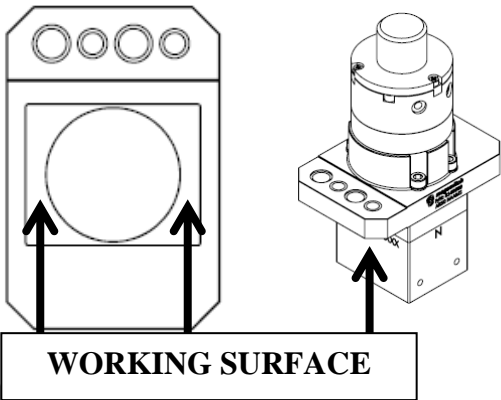
Magswitch AR50 NAAMS

P/N: 8140680

Magswitch “AR” series is explicitly designed for use with pole shoes. Pole shoes must be attached to the unit in order to maximize breakaway force and minimize residual magnetism. Each Magswitch “AR” unit comes equipped with one set of dual purpose pole shoes for flat or pipe/round stock. Simply flip the pole shoes around so the V shape is exposed for use on pipe and other rounds. The “AR” series allows complete customization of pole shapes to provide the best hold on your hard to grip parts. The “NAAMS” Mount is a universal, consistent, and precision effective way to attach these devices to robots and other mounts.

Note: You may have to design and fabricate custom pole shoes depending on your application for optimal performance.

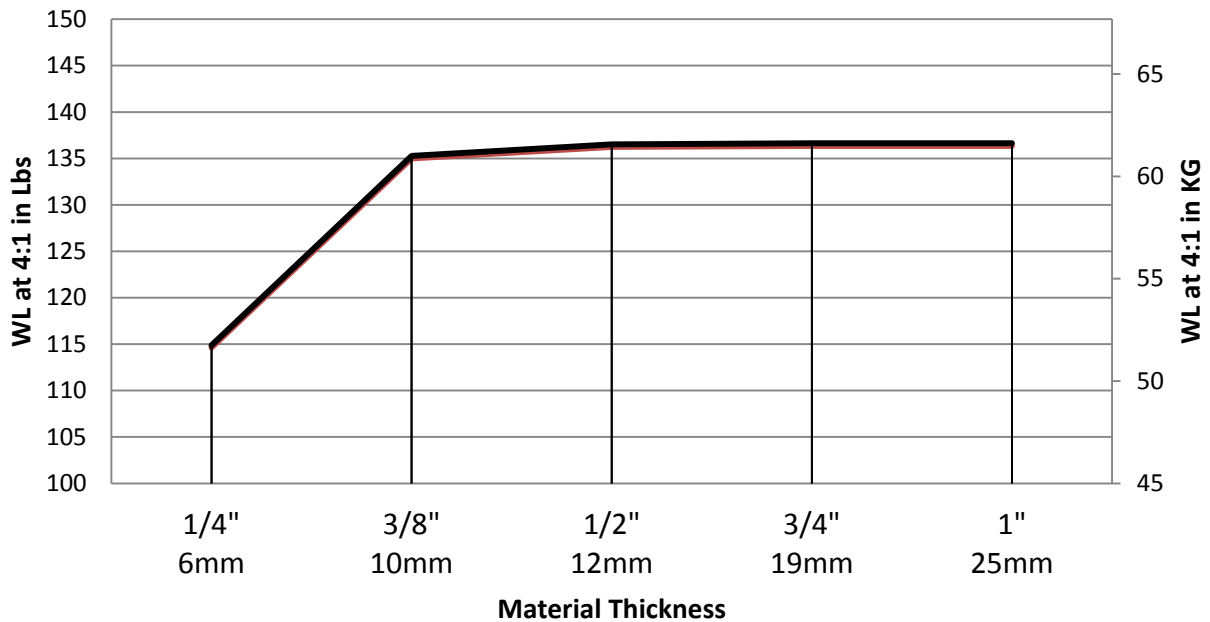
WARNING!
Do Not Operate Unless In
Contact With Ferrous Target



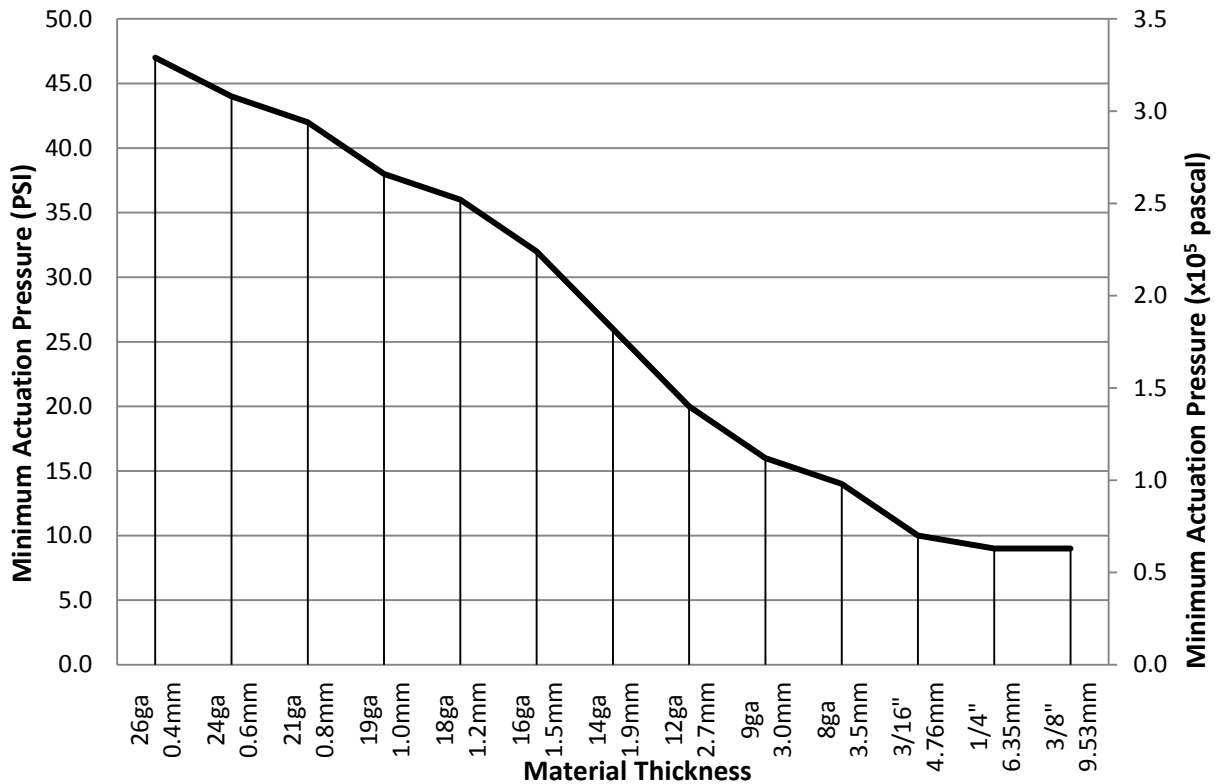
SPECIFICATIONS	
P/N: 8140680 - MAGSWITCH AR50 NAAMS	
Max Breakaway*	548 lbs/248.6 kg
Working Load 4:1*	137 lbs/62.1 kg
Full Saturation Thickness	3/8" / 9.5 mm
Max Shear 2:1*	34 lbs/15.4 kg
Minimum Thickness for De-Stack	3/8" / 9.5 mm
Min Actuation Pressure	20psi / 1.4x10 ⁵ pa
Max Actuation Pressure	145 psi / 1x10 ⁶ pa
Off Target Actuation Pressure	55 psi/ 3.8x10 ⁵ pa
Net Weight	6.1 lbs / 2.8 kg
Air Port Thread	M5x0.8
NAAMS Mount	4:M10x1.5/ 4: Ø 8.0
Overall Height	182 mm
Magnetic Pole Footprint	64x51.75 mm

* Max Breakaway determined in laboratory environment on 2" thick SAE1018 Steel with surface roughness 63 micro inches. Many factors contribute to the actual breakaway force in each application. Always test the magswitch in each application before deployment. Refer to the magswitch information booklet for more information.

Magswitch AR50 NAAMS Working Load



Actuation Pressure Vs. Material Thickness



Part Number 110870

Revision Date: September 25, 2013

* Max Breakaway determined in laboratory environment on 2" thick SAE1018 Steel with surface roughness 63 micro inches. Many factors contribute to the actual breakaway force in each application. Always test the magswitch in each application before deployment. Refer to the magswitch information booklet for more information.

