



Magswitch Technology, Inc.
 8774 Yates Dr. Suite 140
 Westminster, CO 80031
 Magswitch.com.au
 303-468-0662

Magswitch PLAY70x2 MDC

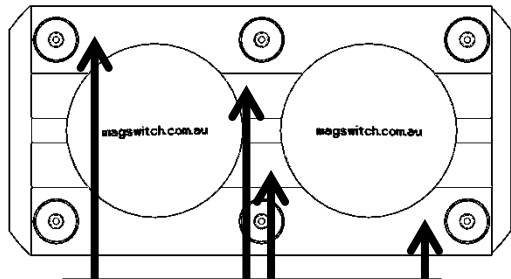
P/N: 8140391

Magswitch LAY series utilizes field interaction between individual magnets to increase depth of field and spread the attractive force over a larger footprint. This allows for greater working loads and increased control over larger work pieces. With customizable pole shoes to fit almost any application, the LAY is a great all around tool that is perfect for picking pipe and round as well as large plate steel.

WARNING!
Do Not Operate Unless In
Contact With Ferrous Target



SPECIFICATIONS	
P/N: 8140391 - MAGSWITCH PLAY70x2 MDC	
Max Breakaway*	2124 lbs/963 kg
Working Load 4:1*	530 lbs/240 kg
Full Saturation Thickness	1/2" / 12.7mm
Max Safe Shear*	175 lbs/79 kg
Minimum Thickness for De-Stack	1/2" / 12.7mm
Min Actuation Pressure	45 psi/3.1x10 ⁵ pa
Max Actuation Pressure	145 psi/1x10 ⁶ pa
Net Weight	36 lbs/16.3 kg
Air Port Thread	Rc 1/4
Mounting Thread	M8x1.25
Overall Height	281.75 mm
Magnetic Pole Footprint	177.5x96 mm
Actuator Part Number	280018

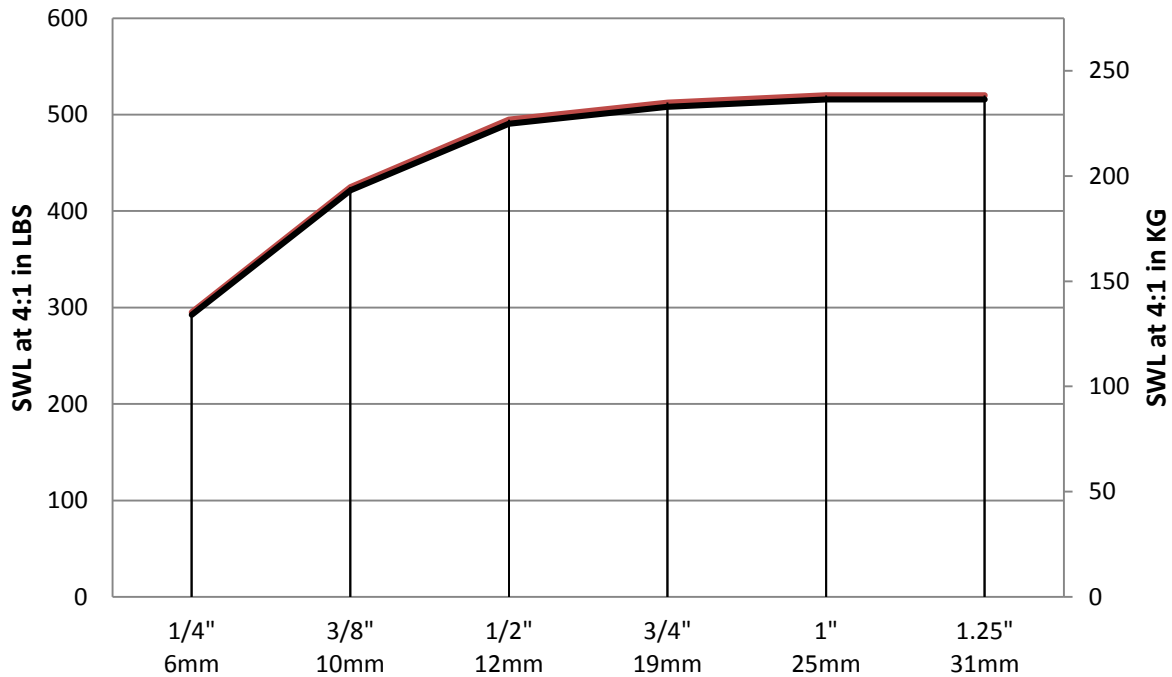


WORKING SURFACE

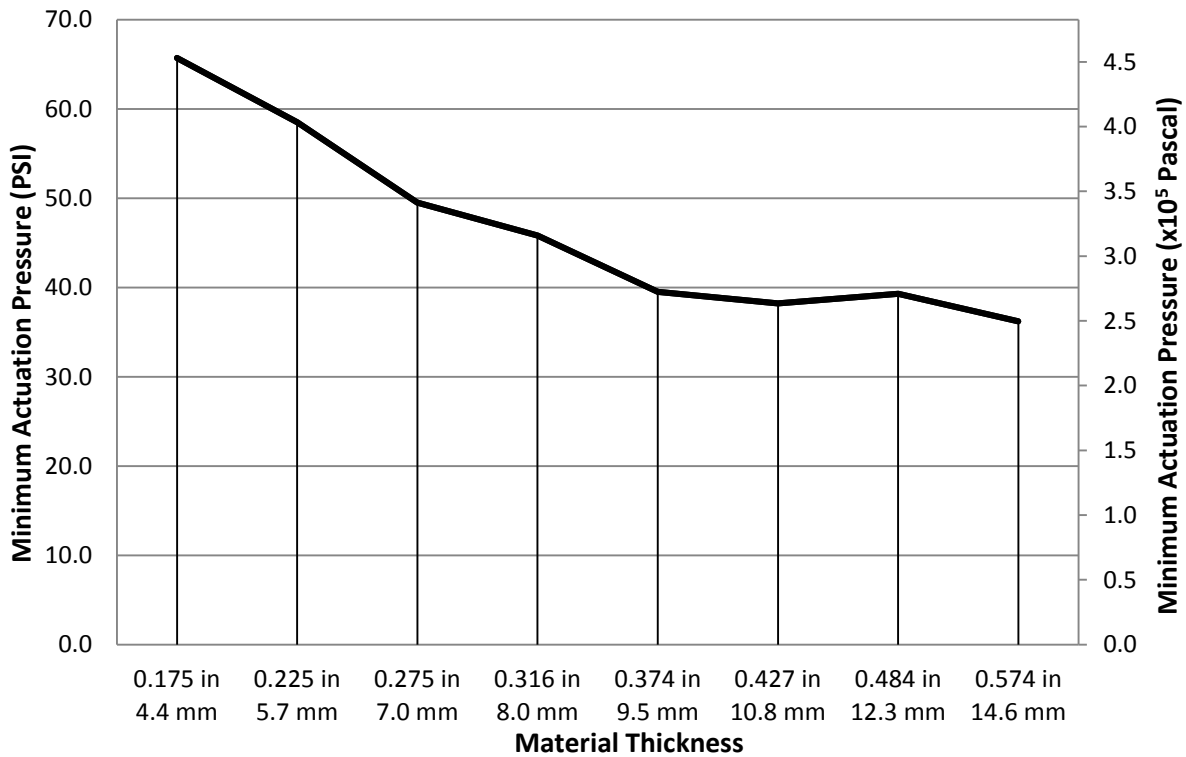
Part Number 110642
 Revision Date: February 10, 2012

* Max Breakaway determined in laboratory environment on 2" thick SAE1018 Steel with surface roughness 63 micro inches. Many factors contribute to the actual breakaway force in each application. Always test the magswitch in each application before deployment. Refer to the magswitch information booklet for more information.

Magswitch PLAY70x2 MDC Safe Working Load

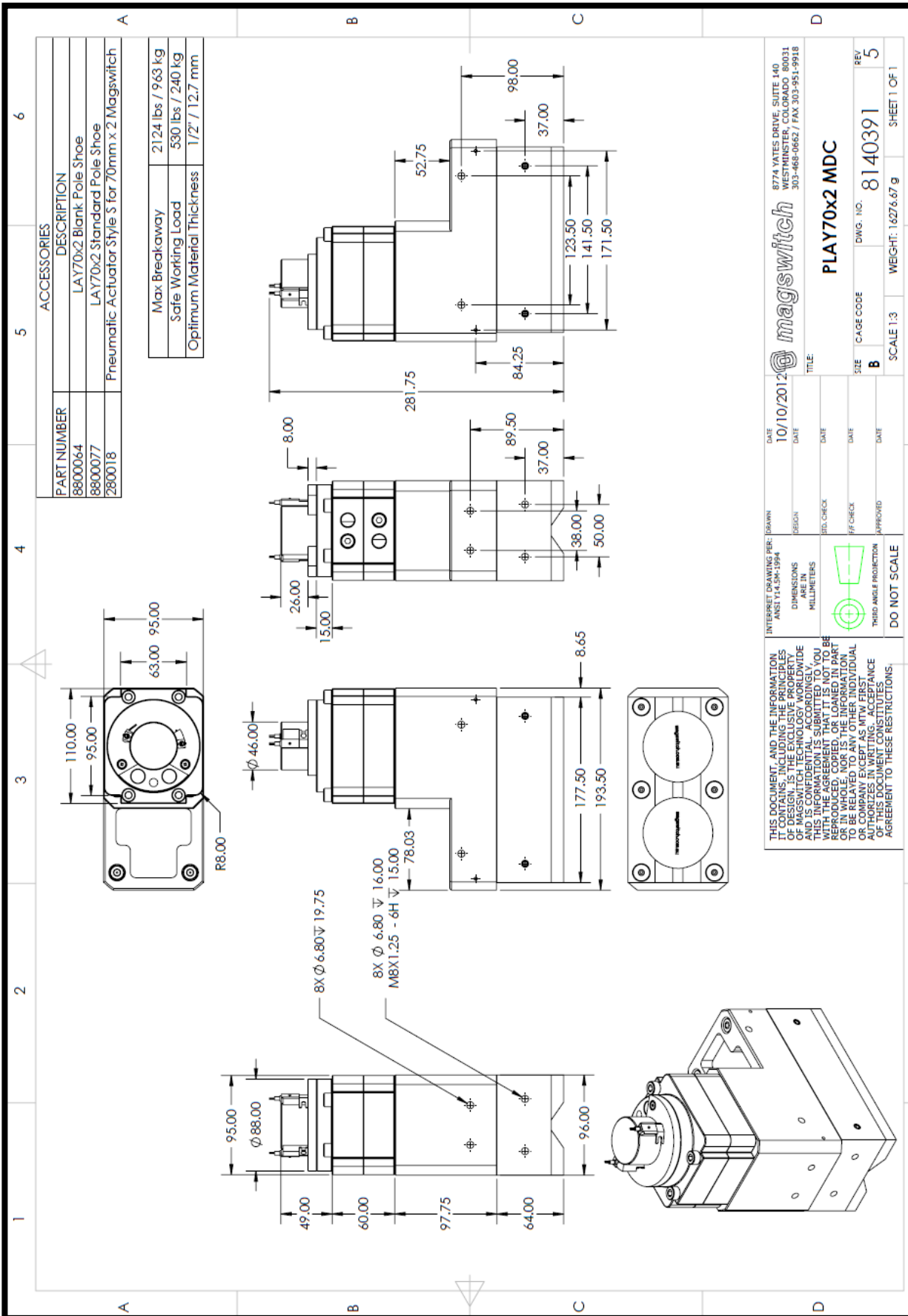


Actuation Pressure Vs. Material Thickness



Part Number 110642
Revision Date: February 10, 2012

* Max Breakaway determined in laboratory environment on 2" thick SAE1018 Steel with surface roughness 63 micro inches. Many factors contribute to the actual breakaway force in each application. Always test the magswitch in each application before deployment. Refer to the magswitch information booklet for more information.



THIS DOCUMENT, AND THE INFORMATION AND DATA CONTAINED HEREIN, ARE THE PROPERTY OF MAGSWITCH TECHNOLOGY WORLDWIDE AND IS CONFIDENTIAL. ACCORDINGLY, IT IS TO BE KEPT SECRET AND NOT TO BE REPRODUCED, COPIED, OR LOANED IN PART OR IN WHOLE, NOR IS THE INFORMATION TO BE RELEASED OR DISCLOSED TO ANY INDIVIDUAL OR ENTITY WITHOUT THE WRITTEN ACCEPTANCE OF THIS DOCUMENT CONSTITUTES AGREEMENT TO THESE RESTRICTIONS.

INTERNET DRAWING REF: ISAWN
ANSI Y14.5M-1994
DIMENSIONS IN MILLIMETERS
THIRD ANGLE PROJECTION
DO NOT SCALE

DATE: 10/10/2012
DESIGN: [blank]
REV: 5
CAGE CODE: 8140391
SCALE: 1:3
WEIGHT: 16276.67 g
TITLE: PLAY70x2 MDC
DWG. NO.: 8140391
REV: 5
SCALE: 1:3
WEIGHT: 16276.67 g
SHEET 1 OF 1



Part Number 110642
Revision Date: February 10, 2012