



GDS-200 Series 베스트셀러 모델



GDS-200D

GDS-200D - 고 해상도 디지털카메라
10,1M pixel, 1/1.8" sensor size, 1/2500s-15s

GDS-200C - 고 감도 CCD카메라
1360x1024 Resolution, 1/2" Sony CCD sensor, 1/10000s-600s

Features

- DNA & Protein Gel, TLC, Petridish Image Capture
- 실 시간으로 Image Viewing, Capturing, Printing
- Sliding Tray 방식으로 Gel Cutting 작업시 용이
- Sliding 방식의 Filter tray는 손쉽게 filter 교환 가능
- Gel Image를 File로 저장, 반 영구적으로 보관 가능



GDS-200C

SmartGel 컴팩트 사이즈, 올인원 시스템

Features

- Fully integrated imaging and analysis system, no need to purchase the computer.
- Compact design to increase your work space, the width of this system is only 32cm.
- No complicated installation, just plug in and you're ready to go.
- Built-in guide will help you to easily master how to use this system.
- The touchscreen function can fully control the imaging capture and analysis. This system can connect printer, mouse and keyboard, and can transfer data through USB and internet.

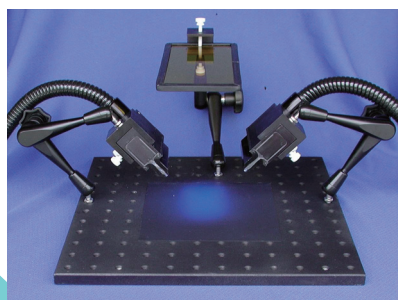


SmartGel

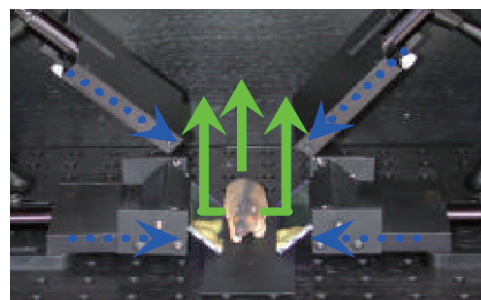
in Vivo Fluorescence Imaging System

Features

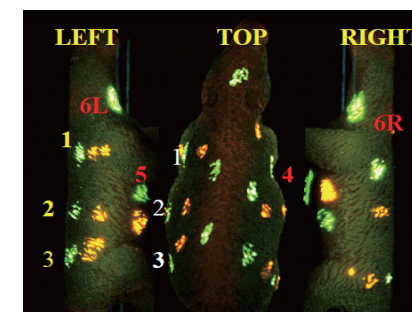
- SYBR Green I stain, SYPRO Orange I stain, Ethidium Bromide, red fluorescent protein (RFP), and green fluorescent protein (GFP).
- Flexibility allows researchers to work with a wide range of samples from fluorescent gels, living mice, culture dishes to 96 well plates.
- Standard features include variable illumination control 0-100%, wavelength selection between 390 nm -750 nm or 100% white light.



IVS-200



Panoramic Imaging System



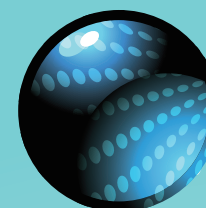
Targets like a fluorescent tumor can be viewed from two different angles at the same time with a single camera

경기도 수원시 권선구 고색동 958 수원첨단벤처벨리 911호
전화 031-252-9755 팩스 031-252-9756
www.mdm-ins.com e-mail : lab13@hanmail.net



Nucleic Acid Staining Solution/Blue Light Transilluminator

GEL DOCUMENTATION SYSTEM



GelView – Nucleic Acid Staining Solution

UltraView – Nucleic Acid Staining Solution

Features

- 안전한 EtBr 대체 Solution
- EtBr과 같은 사용방법 – Gel에 첨가 시 1/20,000으로 사용
- DNA/ RNA 염색
- UV trans 또는 Blue light illuminator 사용가능
- 상온보관

Ordering Infomation

Cat. No, KU-2000-1, GelView 1ml
 Cat. No, KU-2000-5, GelView 5ml

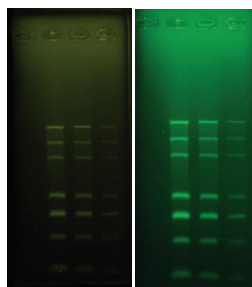


fig.1 fig.2

Agarose Gel Eletrophoresis
 -1/20,000희석해서 젤에 첨가
 -Emission filter EtBr Fiter(Fig1),
 520nm Filter(Fig2)모두 사용가능

Features

- 기존의 EtBr보다 향상된 성능, No Background
- UV illuminator에서 EtBr보다 5-10배 향상된 성능
- Blue light illuminator에서 EtBr보다 8-20배 향상된 성능
- 안전한 EtBr 대체 Solution
- Agarose Gel/ PAGE 모두 사용 가능
- Not affect downstream application – PCR, Enzyme Digestion, Ligation...UV trans 또는 Blue light illuminator 사용가능

Ordering Infomation

Cat. No, KU-2001-1, UltraView 1ml
 Cat. No, KU-2001-5, UltraView 5ml

EtBr(Fig1) vs UltraView(Fig2)

DNA Maker 2000
 Loading Volume: 3ml, 2ml, 1ml,
 0.5ml, 0.25ml, 0.1ml

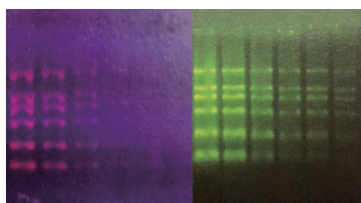


fig.1 fig.2

Blue Light Transilluminator

Features

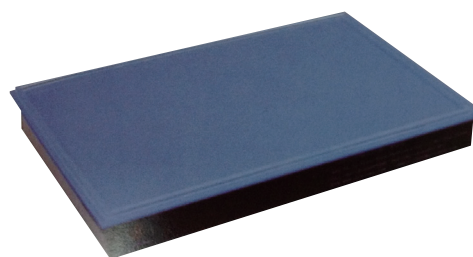
- Light Source : Visible Blue Light
- Safety and No damage to DNA
- 다양한 형광 샘플에 응용 – SYBR Green, GelStar, GelGreen, SYPRO Ruby, FITC and various GFPs
- Viewing glasses, Dark box 기본 제공

Specification

- Light Source : Visible Blue Light
- Instrument Dimensions, mm : 350(L)x230(W)x230(H)
- Viewing Surface Dimensions, mm : 250(L)x150(W)
- LED life : 50,000hr
- Power Input : 100-250V
- Weight : 2kg

Ordering Infomation

Cat. No, KU-2100, Blue Light Transilluminator



KU-2100 Blue Light Transilluminator



Viewing Glasses



Dark Box