

# TRUCK LOADING ARM

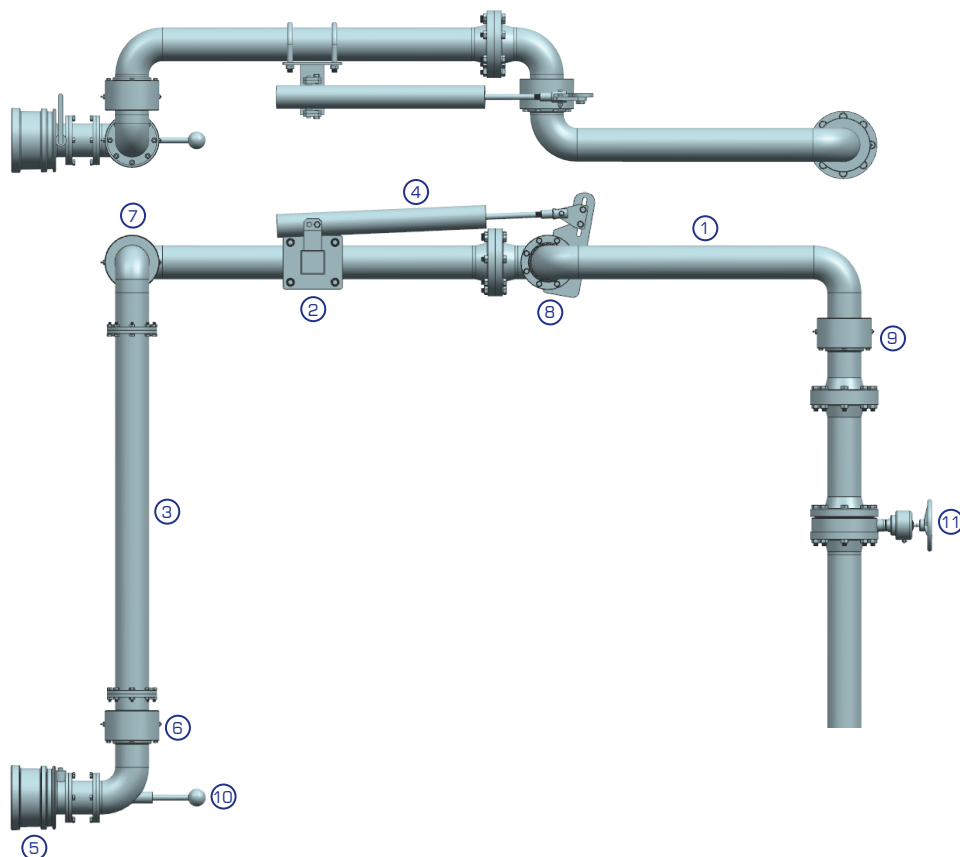
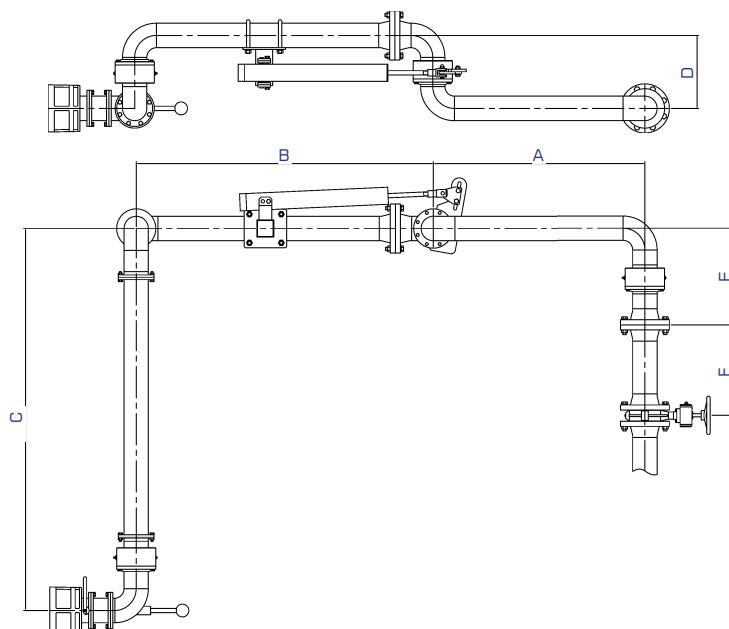
## MLA-TB

### □ COMPONENTS

1. PRIMARY ARM, ALUMINUM
2. SECONDARY ARM, ALUMINUM
3. DROP HOSE, FLEXIBLE HOSE
4. BALANCING CYLINDER, CARBON STEEL
5. API COUPLER, ALUMINUM
6. SWIVEL, ALUMINUM
7. SWIVEL, ALUMINUM
8. SWIVEL, ALUMINUM
9. SWIVEL, ALUMINUM
10. COUPLER HANDLE, ALUMINUM
11. BUTTERFLY VALVE, ALUMINUM

## BOTTOM LOADING ARM

### 4"



### □ DIMENSIONS

SIZE	A	B	C	D	E	F
4"	1000	1400	1800	340	800	1500

LENGTH E&F CAN BE DETERMINED BASED ON CONDITION OF DEMANDED SITE. IF DETAIL INFORMATION ABOUT LEVEL OF THE BUTTERFLY VALVE, MHI WILL SUGGEST APPROPRIATE SIZE.

### □ LENGTH OF DROP ARM

THE SHORTEST ONE IS 1800MM, ACCORDING TO THE SKID CONDITION, THE ARM IS INSTALLED WITH 410MM EXTENTION, SEQUENTIALLY. (I.E., 2210MM, 2620MM, 3030MM, 3440MM, ...)