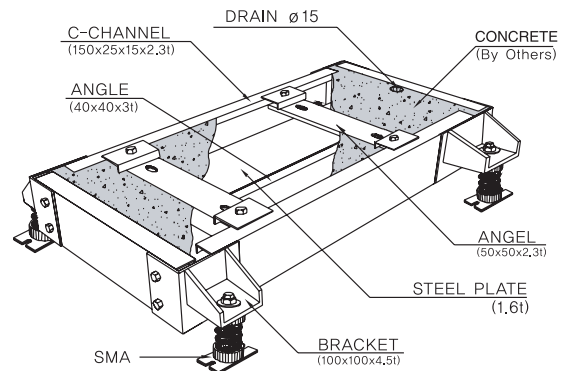
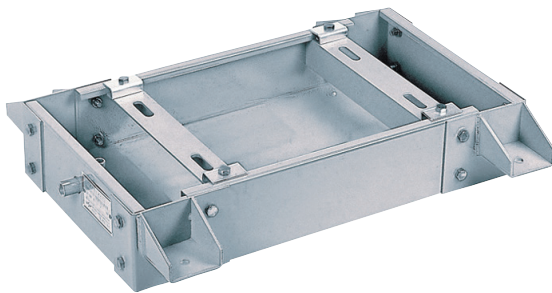


IB Inertia Base Series

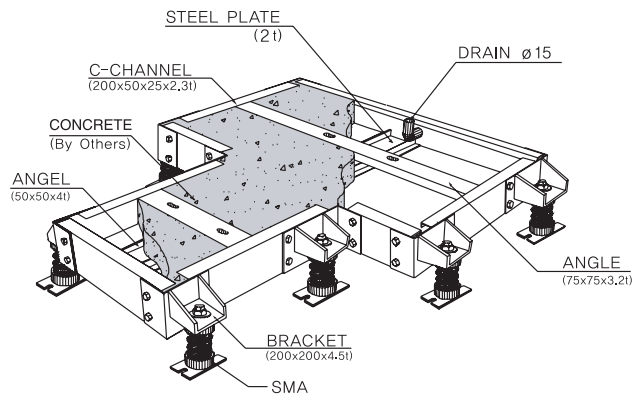
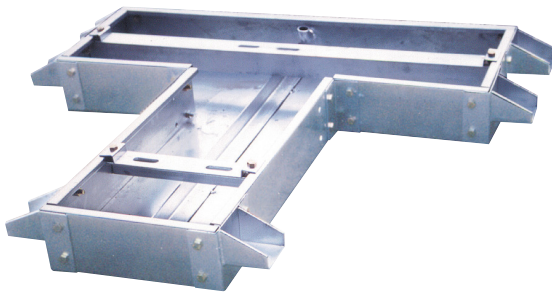
■ Features

IB (Inertia Base) is designed to shut out vibration that occurs while the pump is running, and at the same time, minimize the dynamic deflection resulting from the dynamic force generated when the load rapidly changes, using the weight of concrete. It consists of the base (┐-angle) with C-channel for an easier assembling of the base, pump and motor, bracket for mount and reinforcing bottom plate. The height (H) of Inertia Base is at least 150 mm, and it differs depending on horse power of the motor.

■ IB-150 series For Single-Suction Pumps (Single, Multi-Stage Volute, etc.)



■ IB-200 series For Double-Suction Pumps



■ Installation Features

