

# NFC Flexible Connector

## NFC10S

※ The model name of NFC-S product has changed to NFC10S



Screw Type

## NFC10

※ The model name of NFC-1 product has changed to NFC10



1Ball Type

## NFC20

※ The model name of NFC-2 product has changed to NFC20



2Ball Type

### ■ Features

The flexible connector is mounted between pipes to absorb the stress resulting from the expansion and contraction of the pipe line and shut out the vibration caused by flow of fluid and vibration transferred from equipment. It also maintains an allowable connection error of pipe line, and by doing so, gives flexibility to the whole system.

- (a) Operating temperature:  $-20^{\circ}\text{C} \sim +80^{\circ}\text{C}$
- (b) Operating pressure: for  $10\text{kgf/cm}^2$  and  $20\text{kgf/cm}^2$
- (c) Materials: NEOPRENE, EPDM

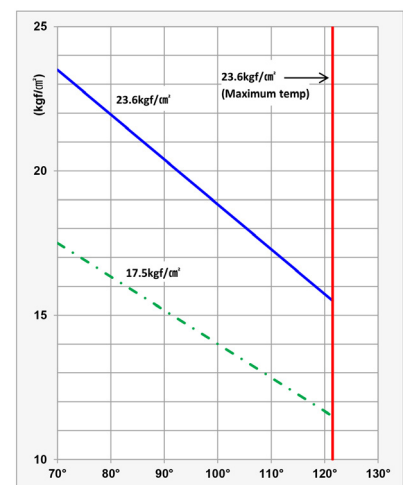
### ■ The composition of products

It is made of nylon tire cord, special synthetic rubber (NEOPRENE, EPDM) and piano steel wire. It has a stiffening ring between balls to avoid excessive expansion by internal pressure.

### ■ Product Special Feature

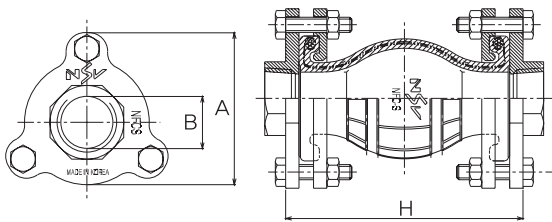
- (a) Excellent resistance against pressure. This product consist of synthetic rubber, nylon tire cord Fabric and piano steel wire. The destruction pressure is Within  $55\text{kgf/cm}^2$  and usage pressure is up to maximum  $30\text{kgf/cm}^2$ .
- (b) Large allowance of concentricity error. Due to Two arch structure, it has good flexibility to all direction. As having large amount of concentricity error allowance, this product protects equipment of pipe line from vibration or other shock damage.
- (c) Large allowance of banding angle and elasticity. This product has allowable banding angle and elasticity Enough to stand pipe-line movement owing to outside Impact.
- (d) Grate anti-vibration and anti-noise effect.
- (e) Good Water resistance, Thermal endurance, Weatherability and Chemical resistance.

### ■ Maximum Operating Pressure And Temperature

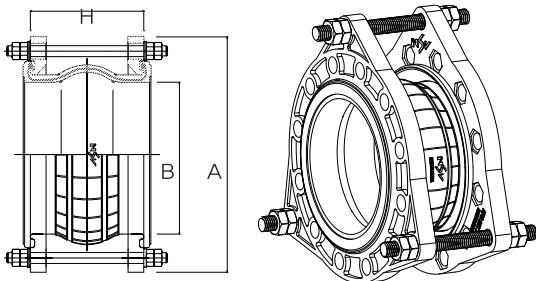


# NFC Flexible Connector

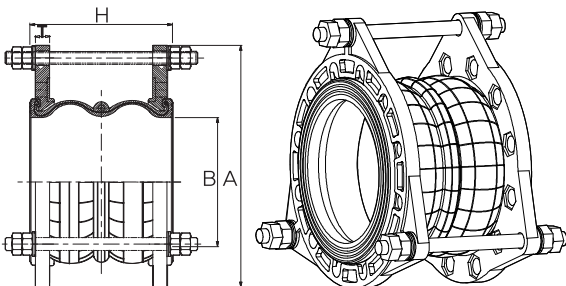
## Product dimension and allowable movement



NFC10S / Screw Type / 2d dwg & 3d dwg



NFC10 / 1Ball Type / 2d dwg & 3d dwg



NFC20 / 2Ball Type / 2d dwg & 3d dwg

## Dimension & Selection Guide

Type	Flange Dimension(mm)		
	A	B	H
NFC10S-25	81	25A	125
NFC10S-32	90	32A	143

(NOTE) The mentioned size and scale can be altered to improve the quality performance and capacity of the product without any notice.

## Dimension & Selection Guide

Type	Flange Dimension(mm)				Dimension(mm)				Qty of Control Rod	
	A	B	H (1Ball)	H (2Ball)	Compression	Height	Concentricity	Curve	10K	20K
NFC10(20)-32	205	32A	125	150	38	13	16	30°	2	2
NFC10(20)-40	205	40A	125	150		13	16	30°		
NFC10(20)-50	220	50A	125	150		13	16	30°		
NFC10(20)-65	240	65A	125	160		13	22	30°		
NFC10(20)-80	252	80A	125	160		19	22	30°		
NFC10(20)-100	285	100A	150	180		19	22	29°		
NFC10(20)-125	336	125A	150	180		19	22	24°		
NFC10(20)-150	376	150A	150	180		19	22	20°		
NFC10(20)-200	380	200A	175	220		19	22	15°	3	3
NFC10(20)-250	448	250A	175	220		22	32	30°		
NFC10(20)-300	495	300A	200	220		22	32	30°		
NFC10(20)-350	600	375A	200	250		22	32	30°	4	4
NFC10(20)-400	560	383A	250	250		22	32	29°		

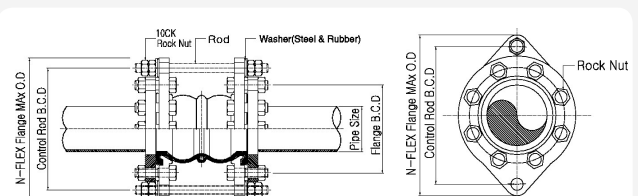
(NOTE) The mentioned size and scale can be altered to improve the quality performance and capacity of the product without any notice.

## Anchoring and Control rods of pipe line

When use a Flexible connector, pipe line should expend or contact by only one direction anchor rods for Preventing flexible connector cracking. Or installing control rods on the flange of flexible connector protect pipe Line from damage owing to over-expansion or over-contraction.



OVER 400A



Control Rod Installation Details