

[www.powerkingmc.com](http://www.powerkingmc.com)

# Powerking MINI CRANE



**Powerking Corporation**



# Powerking MINI CRANE

## Truck Mounted Type

Modern industrial society requires swift and agile maneuverability and flexibility in handling industrial goods. Truck-mounted mini cranes manufactured by Powerking, reinforced by safety devices as well as automatic equipments and scalable to meet unique user demands, can handle a variety of lifting, loading, unloading and transferring requirements of cargoes for field service technicians.



Truck Mounted Type



Stationary



Crane straight out from one side



Crane straight out backward



Crane straight out upward

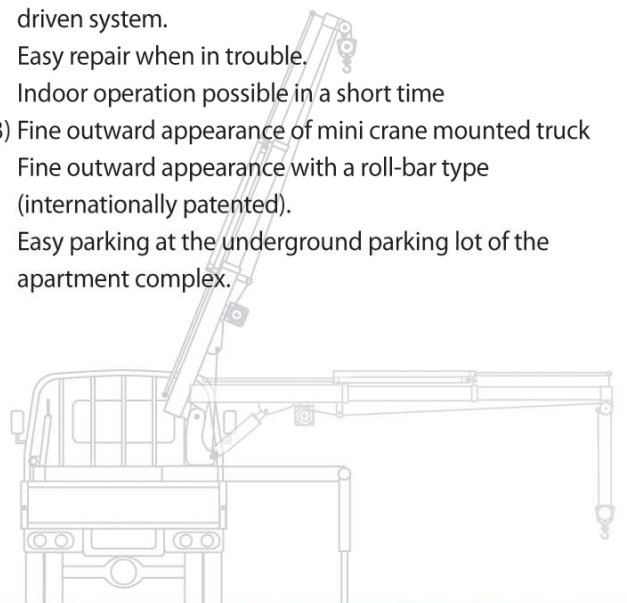


Stationary crane at the factory



## Features

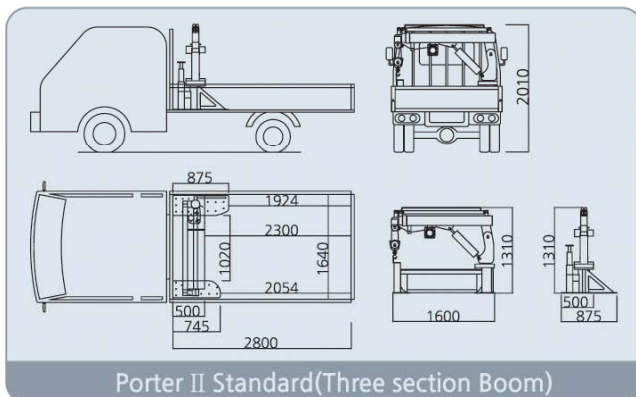
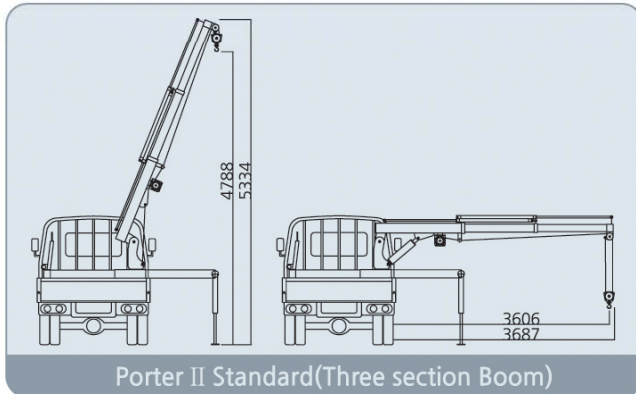
- 1) Simple and easy to install and detach  
No need of a truck modification.  
Installation on the cargo loading deck of a truck.  
Easy reinstallation in case of a truck replacement.  
Approximately 1 or 2 hours needed in installation.
- 2) Two (2) ways are provided for driving the mini crane  
PTO (Power Take Off) System offered and a battery driven system.  
Easy repair when in trouble.  
Indoor operation possible in a short time
- 3) Fine outward appearance of mini crane mounted truck  
Fine outward appearance with a roll-bar type (internationally patented).  
Easy parking at the underground parking lot of the apartment complex.



MINI CRANE

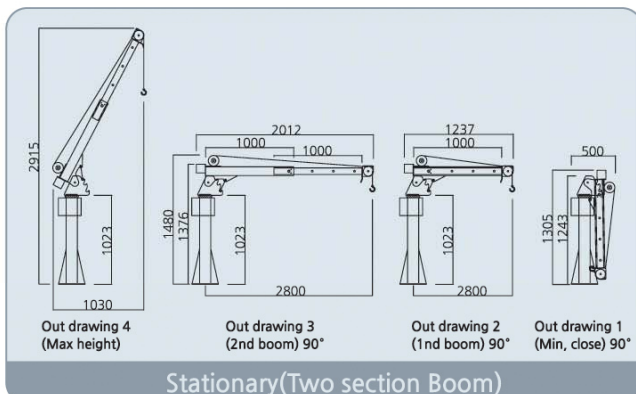
# Specification

## Crane model no. **PKCR-1003**



### Option

- Wireless control
- PTO (Power Take Off) System on the cargo loading deck of a truck,
- Tailored & customized manufacturing capability to accommodate each and every types of working environment
- All automatic operation as well as all manual operation possible
- Available for all cargo trucks regardless of the size or the loading capacity



Descriptions	Unit	Spec.
Drive type		Battery driven (DC12V/24V)
Hyd. pump		1.6kw
Max. Lifting Capacity	kg-cm	1000kg
Max. Lifting Height	cm	400cm
Max. Working Range	cm	370cm
Rated Load	Kgf/m	1000/1.5
		500/2.5
		300/3.7
Boom type		Rectangular, 3sections
Boom Extension Speed	m/sec.	3/20.
Derick Extending Speed	°/sec.	0-68/12
Hoist		Battery driven (DC12V/24V)
hoist motor		1kw
Hoist Speed	m/min(layer/line)	10(4/4)
Wire Rope	Ø/m	Ø6.4/15m
Swing Angle	°	360°, Reciprocating
Swing Speed	RPM	1.5~2.0
Outrigger type		Hyd. cylinder driven
Outrigger range		110cm
Rated flow rate	L/min	3.8L/min
working pressure	Kgf/cm <sup>2</sup>	180
Oil tank capacity	Liter	8~10
Safety device	standard	Hyd.relief v/v, Over cenetr V/V,
	standard	Self-swing locking system, Hoist brake,
	(optional)	Hook safety device(optional)
Crane control	standard	Wired remote control switch (6m)
	(optional)	Wireless remote control switch
Crane self-weight	kg	approx'y, 400
Crane net-size	cm	1600x500x1310
Crane gross-size	cm	1650x875x1310
Allowable vehicle	ton	above 1 ton

Above data are rated loads on condition of without additional load and stretching of boom is not considered.

## Crane model no. **PKCR-500S**

Descriptions	Unit	Spec.
Drive type		by Manual
Max. Lifting Capacity	kg/cm	500kg
Max. Lifting Height	cm	260cm
Max. Working Range	cm	190cm
Rated Load	Kgf/m	500/1.9
Boom		Manual extention, telescopic
Boom type		Rectangular, 2staged
Derick		Manual, 3staged degrees
Hoist	(optional)	Battery driven (DC12V/24V)
Swing Type		Manual
Swing Angle	degrees	360°, Reciprocating
Outrigger type	(optional)	Manual
Outrigger range	(optional)	110cm
Crane self-weight	kg	approx'y, 100
Crane net-size	cm	400x300x1310
Crane gross-size	cm	500x430x1310
Allowable vehicle	ton	above 0.5

Above data are rated loads on condition of without additional load and stretching of boom is not considered.



# Powerking MINI CRANE

## Where to use



For agricultural products



For moving household articles at the residential area



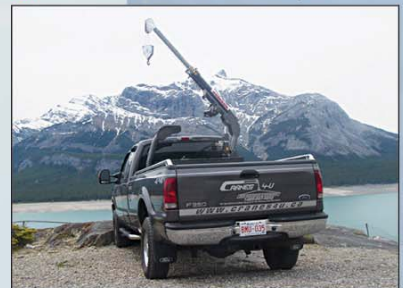
For boats, vessels (Yeosu Expo.)



For repair and transporting of vessels



At factories



At mountains area

Powerking



Head Office



Factory

## Powerking Corporation

### HEAD OFFICE

YongMa 2 Ro #6, Kwachen City, Kyung Ki Do, Seoul KOREA, 427-060  
TEL: +82-2-507-6767(R), FAX: +82-2-504-2435,  
E-mail: powerking777@kornet.net

### FACTORY

#934-35, Hajeo-Ri, Paltan-Myun, Whasung-City, Kyungki-Do, KOREA

[www.powerkingmc.com](http://www.powerkingmc.com)

### Local Dealer