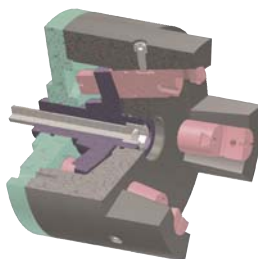


POL

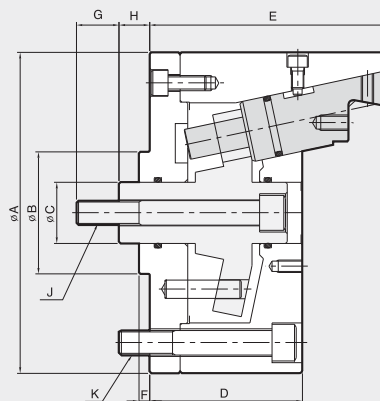
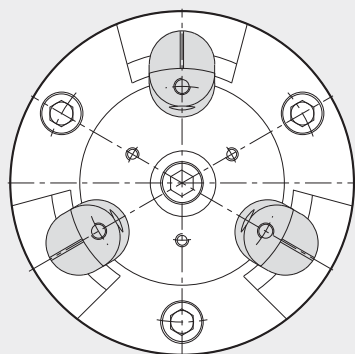
Outside Pin Arbor Chuck

- Ideal for second operation O.D. gripping
- Active pull-down for high precision
- Counter centrifugal gripping reduces distortion



SPECIAL CHUCK

Special Chuck



Dimensions

	ΦA	$\Phi B(h7)$	ΦC	ΦD	E	F	G	Hmax.	Hmin.	J	K
POL-80	130	60	24	72	103	5	20	18	10	M12	3-M8 PCD100
POL-100	162	80	30	90	130	7	30	22.5	12.5	M16	3-M12 PCD130
POL-140	210	80	40	100	155	7	30	25	15	M16	3-M16 PCD170
POL-180	250	80	45	110	165	7	30	25	15	M18	3-M16 PCD210
POL-230	320	120	50	130	200	7	40	30	20	M20	6-M16 PCD270
POL-300	400	-	60	137	248	7	40	25	15	M35	M24

Specifications

Type	Max. Clamping Force	Max. Drawbar Pull	Jaw Stroke Dia.	Plunger Stroke	Clamping Range		Max. Speed	Weight	GD ²
	[kgf]	[kgf]	[mm]	[mm]	Pin Jaw	Top Jaw	[r.p.m.]	[kg]	[kgf·m ²]
POL-80	2250	1200	3.4	8	65-80	15-60	5000	8	0.067
POL-100	3760	2000	4.2	10	86-100	20-80	4500	16	0.2
POL-140	4700	2500	4.2	10	120-140	60-110	3000	27	0.54
POL-180	5640	3000	4.2	10	150-180	100-145	2000	46	1.43
POL-230	7520	4000	4.2	10	-	120-200	2000	70	3.5
POL-300	7520	4000	4.2	10	-	150-270	2000	165	5.6