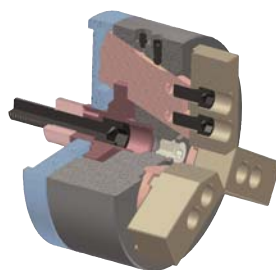


DDO

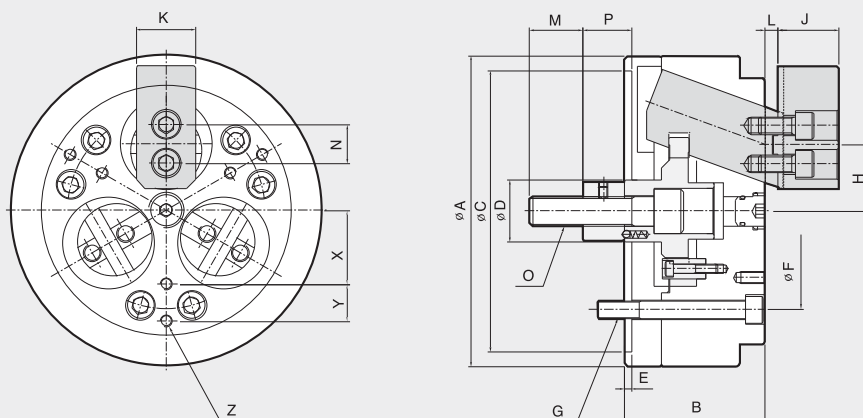
Inside Draw-Down Chuck

- Workpiece pulled down to location for superior accuracy
- Very accurate for parallel and perpendicular surfaces
- Interchangeable top jaws facilitate work on multiple workpieces
- Sealed to prevent chips and coolant from entering the chuck body



SPECIAL CHUCK

Special Chuck



Dimensions

	ΦA	B	ΦC(h7)	ΦD	E	ΦF	G	Hmax.	Hmin.	J	K	Lmax.	Lmin.	M	N	O	Pmax.	Pmin.	X	Y	Z
DDO-06	165	80	140	35	5	104.8	M10	37.9	35	30	35	12	4	36	-	M16	31	23	40	20	M6
DDO-08	210	95	190	42	5	133.4	M12	46.6	43	41	40	14	4	36	26	M20	38	28	50	25	M8
DDO-10	254	110	230	52	5	171.4	M16	57.9	52.5	46	50	19	4	46	32	M24	47	32	60	30	M8
DDO-12	304	125	230	80	5	171.4	M16	65.4	60	51	60	19	4	50	36	M27	47	32	70	40	M10
DDO-15	381	140	300	60	8	230	M20	93.6	86.4	60	70	26	6	55	40	M30	63	43	95	45	M12

Specifications

Type	Max. Clamping Force	Max. Drawbar Pull	Jaw Stroke Dia.	Clamping Range		Max. Speed	Weight	GD ²
	[kg]	[kg]	[mm]	Standard	Top Jaw	[r.p.m.]	[kg]	[kg·m ²]
DDO-06	2500	1500	5.8	35-140	70-140	5000	13	0.18
DDO-08	4500	2500	7.2	40-180	90-180	4500	26	0.66
DDO-10	6000	3500	10.8	50-220	100-220	4000	44	1.50
DDO-12	7500	4500	10.8	60-270	110-220	3500	68	2.90
DDO-15	9000	5500	14.5	250-340	200-340	1500	110	6.5