

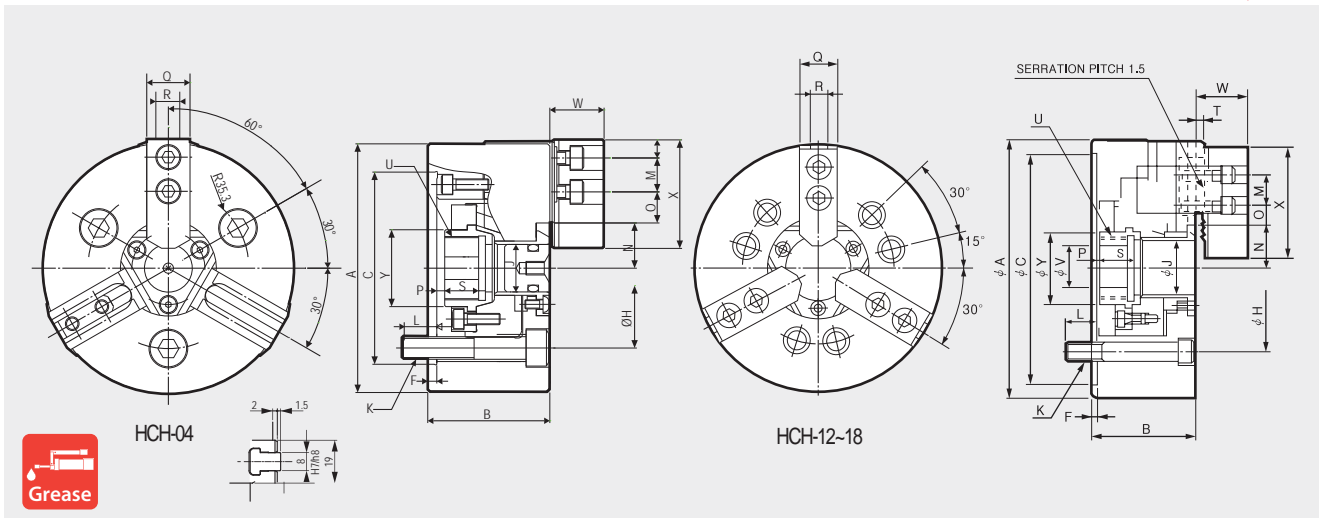
HCH

Standard 3-Jaw Open-Center Chuck (110mm - 304mm)



- Standard 3-jaw wedge-style open-center chuck

HYDRAULIC CHUCK



It is recommended to grease chucks at least twice a day in order to maximize longevity.

Dimensions

	ΦA	B	ΦC(H6)	F	H	ΦJ	K	L	M	Nmax.	Nmin.	Omax.	Omin.	Pmax.	Pmin.	Q	R	S	T	Umax.	ΦV	W	X	ΦY
HCH-04	110	54	85	4	70.6	21	3-M10	15.5	15	20	17.9	14.25	6.75	3.5	-3	19	8	15	2	M28x1.5	10	24	48	34
HCH-12	304	110	220	6	171.4	78	6-M16	23	30	58	52.7	48.75	12.75	8	-15	49	18	38	5	M88x2.0	50	54	129	96
HCH-15	381	133	300	6	235	117.5	6-M20	50	43	82	76.7	43.75	18.25	11	-12	62	22	39	5	M130x2.0	60	70	165	139
HCH-18	450	133	380	6	235	117.5	6-M20	30	43	82	76.7	78.25	18.25	11	-12	62	22	39	5	M130x2.0	60	70	165	139

- ※ Blank and machined draw-nuts are available.
- ※ "U" is Max. Draw nut size.

Specifications

Type	Thru Hole Dia.	Grip Dia. [mm]	Jaw Stroke Dia.	Plunger Stroke	Max. Permissible Input Force	Max. Static Gripping Force	Max. R.P.M.	Weight	GD ²	Operating Cylinder	Max. Hydraulic Pressure	Operating Hard Jaw	KITAGAWA® Model
	[mm]	Max. Min.	[mm]	[mm]	[kN(kgf)]	[kN(kgf)]	[min ⁻¹ (r.p.m.)]	[kgf]	[N·m ² (kgf·m ²)]		[Mpa(kgf/cm ²)]		
HCH-04	21	110 5	4.2	6.5	8(800)	13(1350)	5500	3.7	0.2(0.024)	HYH-0933	2.2(22.4)	HB04A1	B-04
HCH-12	78	304 19	10.6	23	49(4997)	129(13150)	3000	63	29.71(3.03)	SH-19082	2.3(23.5)	HB12B1	B-12
HCH-15	117.5	381 30	10.6	23	71(7240)	180(18355)	2500	120	89.41(9.09)	SH-25011	2.3(23.5)	HB15A1	B-15
HCH-18	117.5	450 30	10.6	23	71(7240)	180(18355)	2000	164	174.6(17.8)	SH-25011	2.3(23.5)	HB15A1	B-18

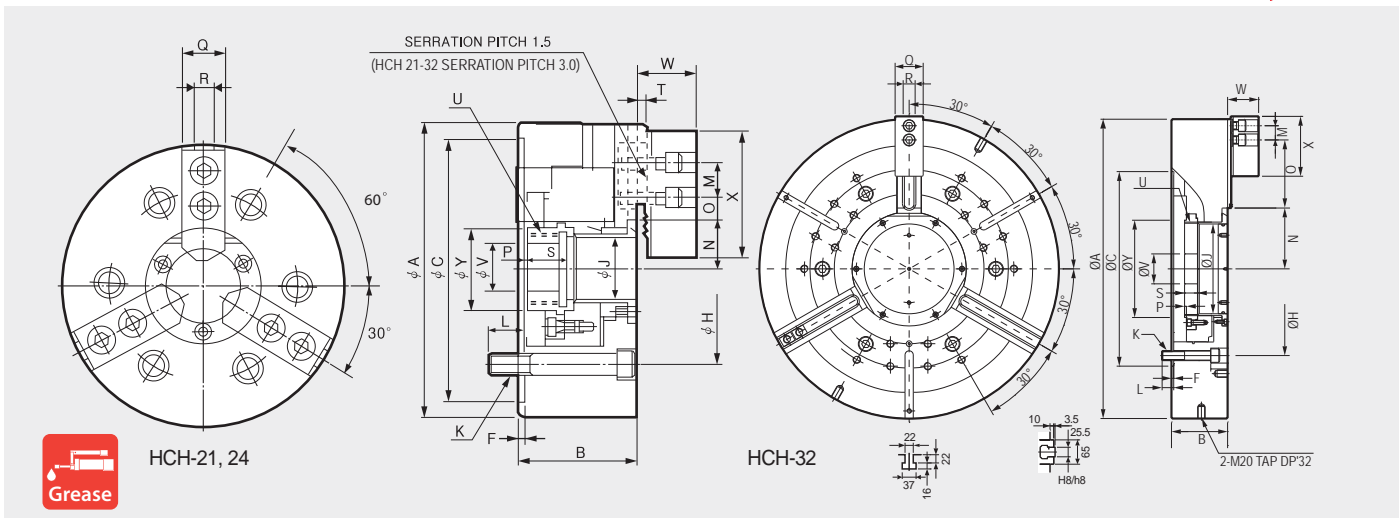
- ※ Maximum turning speed is based upon actual measurement.
- ※ Specifications are subject to change without notice.
- ※ Samcully Machinery Co., Ltd. is no longer an OEM manufacturer for Kitagawa® Iron Works Co., Ltd.

HCH

Standard 3-Jaw Open-Center Chuck (381mm-800mm)

- Standard 3-jaw wedge-style open-center chuck

HYDRAULIC CHUCK



It is recommended to grease chucks at least twice a day in order to maximize longevity.

Dimensions

	ϕA	B	$\phi C(H6)$	F	H	ϕJ	K	L	M	Nmax.	Nmin.	Omax.	Omin.	Pmax.	Pmin.	Q	R	S	T	Umax.	ϕV	W	X	ϕY
HCH-21	530	140	380	6	330.2	140	6-M22	31	60	98.5	93.2	87.5	21.5	11	-12	65	25	39	5	M155x3.0	80	72	180	170
HCH-24	610	149	380	6	330.2	165	6-M22	32	60	108	102.7	117.5	21.5	20	-3	65	25	40	5	M175x3.0	80	72	180	187
HCH-32	800	150	520	6	463.6	240	6-M24	31	38	162.6	153.6	182	20	29	-5	75	25.5	34.5	10	M250x3.0	80	83	160	260

※ Blank and machined draw-nuts are available.

※ "U" is Max. Draw nut size.

Specifications

Type	Thru Hole Dia.		Grip Dia. [mm]		Jaw Stroke Dia.	Plunger Stroke	Max. Permissible Input Force	Max. Static Gripping Force	Max. R.P.M.	Weight	GD ²	Operating Cylinder	Max. Hydraulic Pressure	Operating Hard Jaw	KITAGAWA Model
	[mm]	Max.	Min.	[mm]	[mm]	[kN(kgf)]	[kN(kgf)]	[min ⁻¹ (r.p.m.)]	[kg]	[N-m ² (kgf-m ²)]		[Mpa(kgf/cm ²)]			
HCH-21	140	530	87	10.6	23	90(9177)	234(23861)	1700	235	351.1(35.8)	SH-25011	3.0(30.6)	HB18B2	B-21	
HCH-24	165	610	110	10.6	23	90(9177)	234(23861)	1400	293	651.2(66.4)	SYHL-2816	3.0(30.6)	HB18B2	B-24	
HCH-32	240	800	240	18	34	100(10193)	240(24464)	1200	530	598.4(61)	SYHL-2816	3.2(33.6)	HB32B2	-	

※ Maximum turning speed is based upon actual measurement.

※ Specifications are subject to change without notice.

※ Samchully Machinery Co., Ltd. is no longer an OEM manufacturer for Kitagawa® Iron Works Co., Ltd.