

STRA

Wide-Opening Self-Centering Steady Rest

방진구 (와이드 오픈)



제품 특징

샤프트류 가공시 소재의 흔들림 및 척킹의 불안정으로 인한 트러블 발생을 방지하기 위하여 워크를 지지함

주요 기술

특수캠 구조, 높은 센터링 정도 및 반복정밀도
근접 스위치 설치로 클램프 확인 가능
공작물 로딩이 원활하도록 한쪽 아암이 넓게 벌어짐

Application / Customer's Benefit

Enhances machining accuracy by avoiding problem with unstable, heavy or long work pieces

Technical features

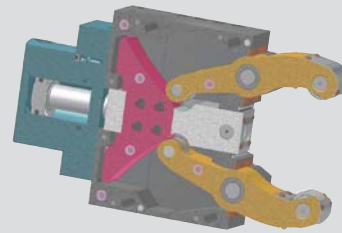
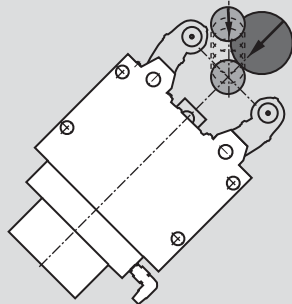
The arms and center rollers are interconnected and designed to self-adjust to various size workpieces.

The mechanical design improves durability by eliminating the need for springs.

고정 · 이동방식 / Fixed or Travelling Applications

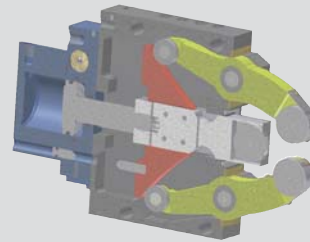
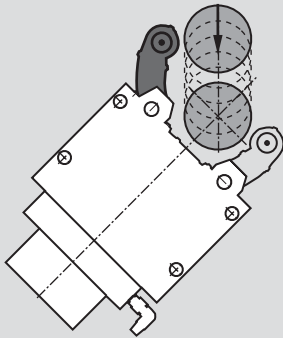
STA

Conventional model



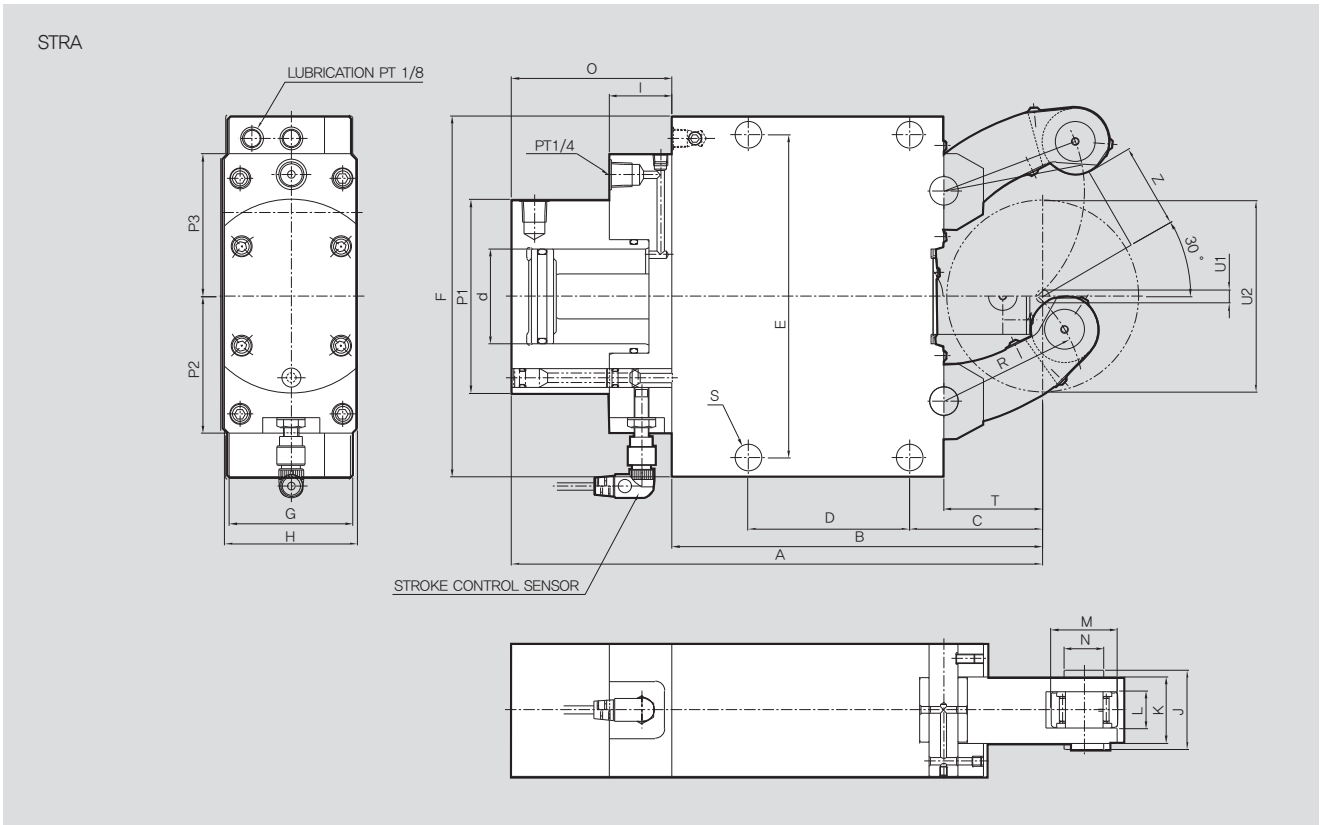
STRA

The wide opening arm of the STRA steady rest makes vertical loading and automation convenient



제품 사양 / SPECIFICATIONS

		STRA-1	STRA-2	STRA-3	STRA-3.1	STRA-4	STRA-5	STRA-6
피스톤 면적 [cm ²]	Piston Area	7	19.6	50	50	78	78	132
최대 롤러 파악력 [kgf]	Max. Clamping Force / Roller	100	450	1000	1000	1500	2000	3000
적용 압력 [bar] Operation Pressure	Max.	50	70	60	60	60	80	70
	Min.	6	8	8	8	8	8	8
센터링 범위 Centering Range [mm]	Max.	52	80	130	150	220	268	460
	Min.	4	8	12	22	30	50	160
롤러 최대회전속도 [m/min]	Max. Roller Surface Speed	800	800	725	725	715	700	700
센터링 정밀도 [mm]	Centering Accuracy	0.02	0.02	0.04	0.04	0.05	0.06	0.06
반복 정밀도 [mm]	Repeatability Accuracy	0.005	0.005	0.007	0.007	0.007	0.01	0.01
무게 [kg]	Weight	6	14	39	40	92	152	420



제품 치수 / DIMENSIONS

	STRA-1	STRA-2	STRA-3	STRA-3.1	STRA-4	STRA-5	STRA-6
A	207	279.5	431	440	608	688.5	944.5
B	137	195	312	320	448	510	709
C	51	70	115	123	146	178	215
D	64	85	135	135	240	270	330
E	118	170	262	262	365	400	640
F	132	190	290	290	400	440	680
G	55	70	85	85	110	145	145
H	70	70	100	100	144	144	158
I	33	33	37	37	37	37	37
J	24	42	52	52	67	83	83
K	20	35	45	45	60	75	75
L	12	19	25	25	25	29	29
M	19	35	47	47	52	62	80
N	6	21	25	25	32	36	42
O	70	84.5	120	120	160	187.5	235.5
P1	84	102	137	137	165	165	190
P2	66	72	90	90	102	102	115
P3	66	75	100	100	110	110	130
R	50.5	74	119	124	172	209	290
S	11	14	18	18	23	23	27
T	37	52	85	93	128	160	175
Z	26.5	41	66	76	111	135	230
U1	4	8	12	22	30	50	160
U2	52	80	130	150	220	268	460