



# Quick Release Mooring Hook



**SAMGONG CO., LTD.**

Established 1971



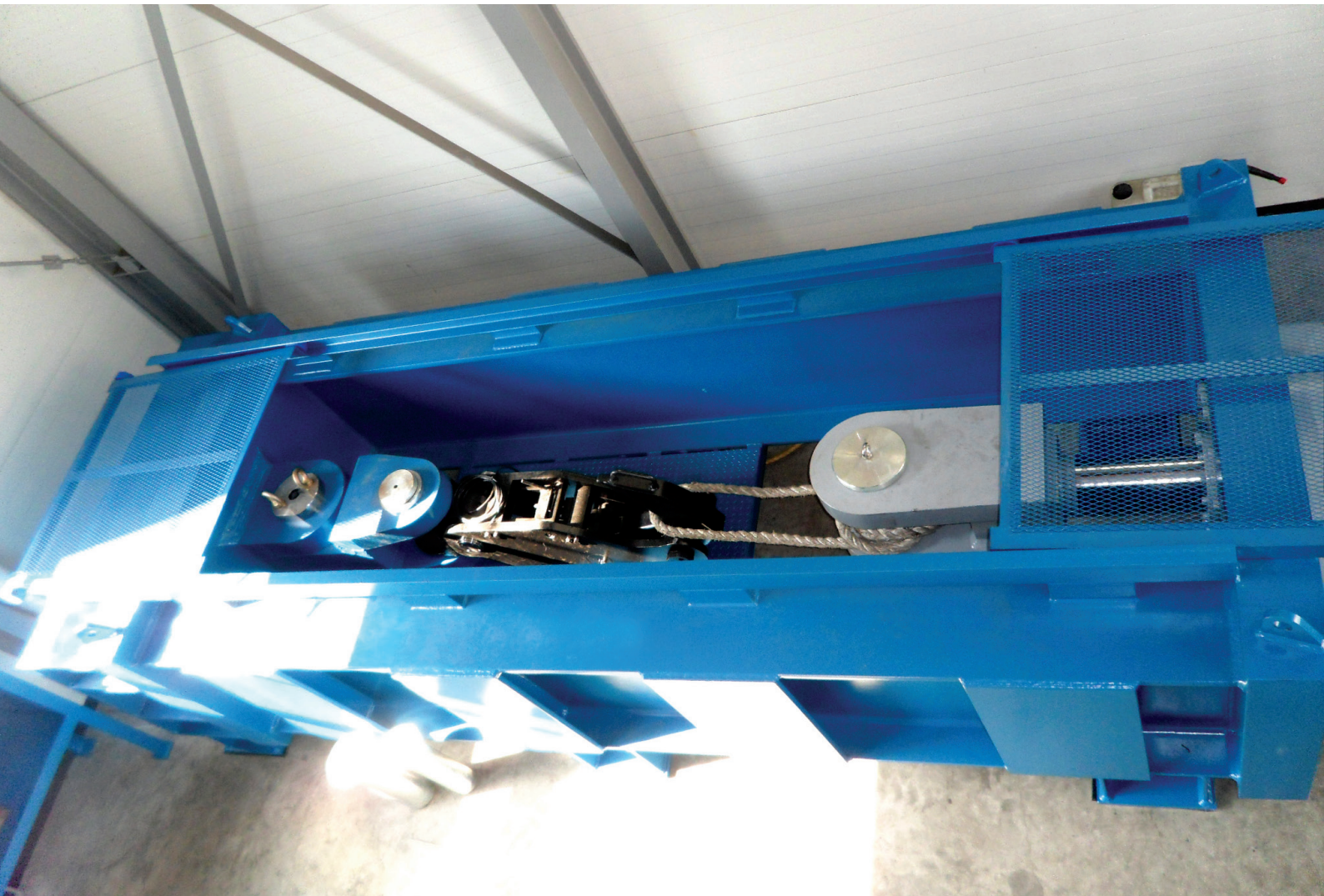
---

# SAMGONG

## Quick Release Mooring Hook

Supply Record	Since 1999
Load Capacity of Each Hook	30 ~ 200 tons
Hook Quantity	Single Hook, Double Hook, Triple Hook, Quadruple Hook
Hook Release Type	Manual, Electrical, Hydraulic Release System
Supply Services	Engineering, Manufacturing, Installation supervision, Maintenance
Certificate	ISO9001, ISO TS29001, ISO 14001, OHSAS 18001
Sales contact point	harbour@sam-gong.co.kr

---



## Manual Release Type QRH

- Manual Release Lever
- Manual operation is possible with little force on lever
- Capstan is installed with Local Control Panel
- Can be linked with Mooring Load Monitoring System



## Auto Release Type QRH

- Local or Remote Release Operation
- Electric or Hydraulic Release Equipment
- Capstan is installed with Local Control Panel
- Can be linked with Mooring Load Monitoring System



## Capstan

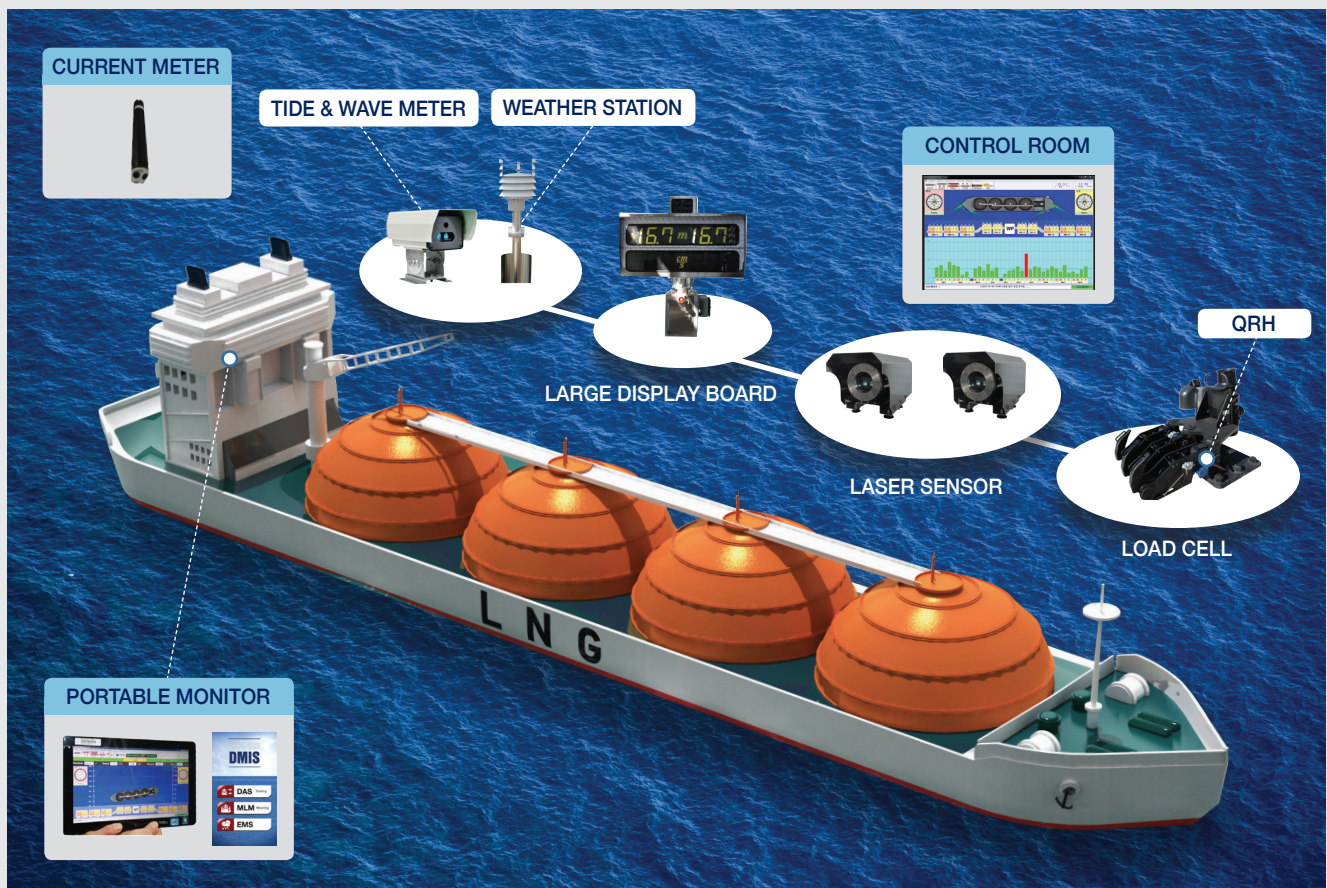
- Capstan is installed at each hook station or free standing station
- Capstan is controlled by foot switch or selector switch
- Electric motor and foot switch can be certified for explosion proof in hazardous area
- Option item : Brake System





# Docking&Mooring Integrated System (DMIS)

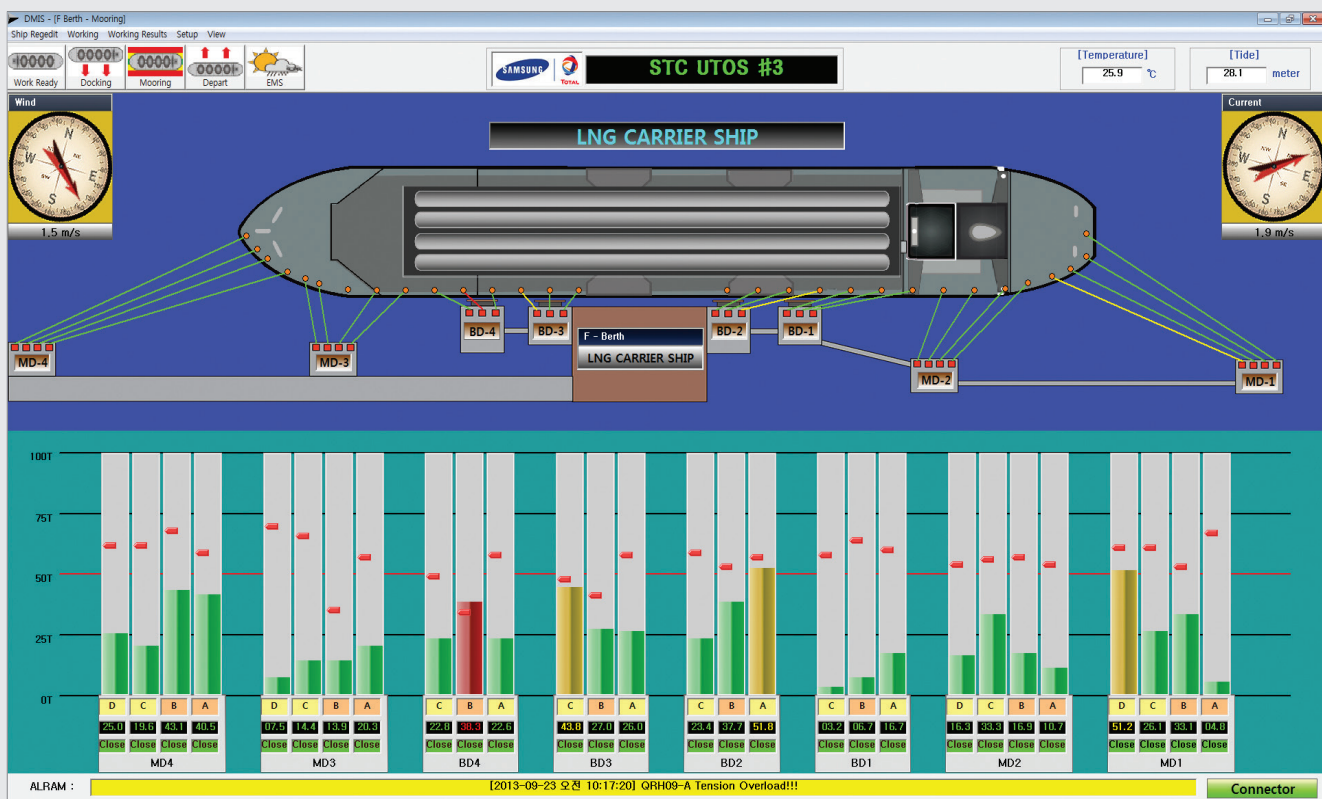
- SAMGONG provides Docking and Mooring Integrated System for stable berth operation
- This system includes monitoring software and equipment of Docking Aid System (DAS), Environmental Monitoring System (EMS) and Mooring Load Monitoring System (MLM)
- DMIS includes components as mentioned below :
  - DAS : Two Laser Sensors, Large Display Board, DAS Controller
  - EMS : Tide & Wave Meter, Weather Station, Current Meter, EMS Controller
  - MLM : Load Cells with Converter, MLM Controller
  - Monitoring Equipment : Main Server PC, Software, Printer, Portable Monitor, Mobile Application





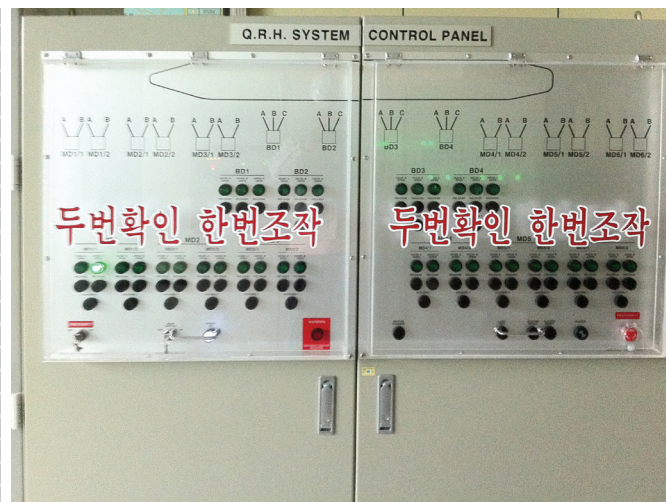
# Mooring Load Monitoring System (MLM)

- SAMGONG provides Mooring Load Monitoring System for stable berth operation
- This system includes monitoring software and equipment of Mooring Load Monitoring System (MLM)
- DMIS includes components as mentioned below :
  - Shaft Pin Type Load Cells : 30 ~ 200 tons certified for hazardous area when required
  - Converter for Load Cell Data
  - MLM Controller
  - Monitoring Equipment (Main Server PC, Software, Printer)



# Remote Release System

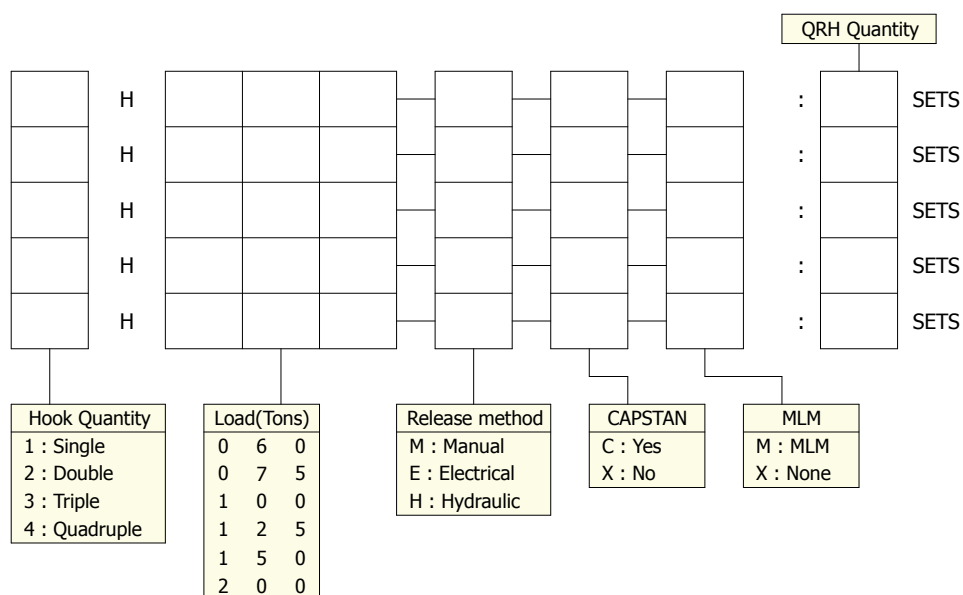
- Operators can operate each or group hooks. Also in case of Emergency, operator can release all hooks simultaneously
- This system includes items mentioned below :
  - Remote Release Control Panel
  - Local Release Control Panel
  - Electric Actuator System or Hydraulic Cylinder System
- Local Release Control Panel & Electrical Actuator can be provided with Explosion Proof Certificate when required





# Selection Method

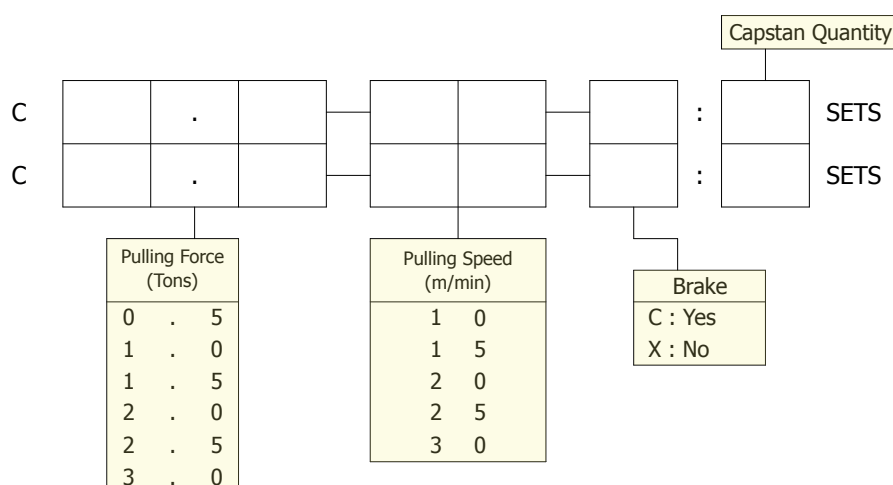
## QRH Selection Method



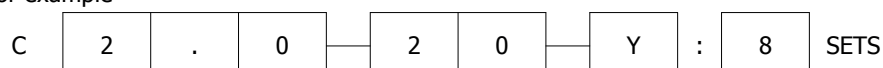
For example

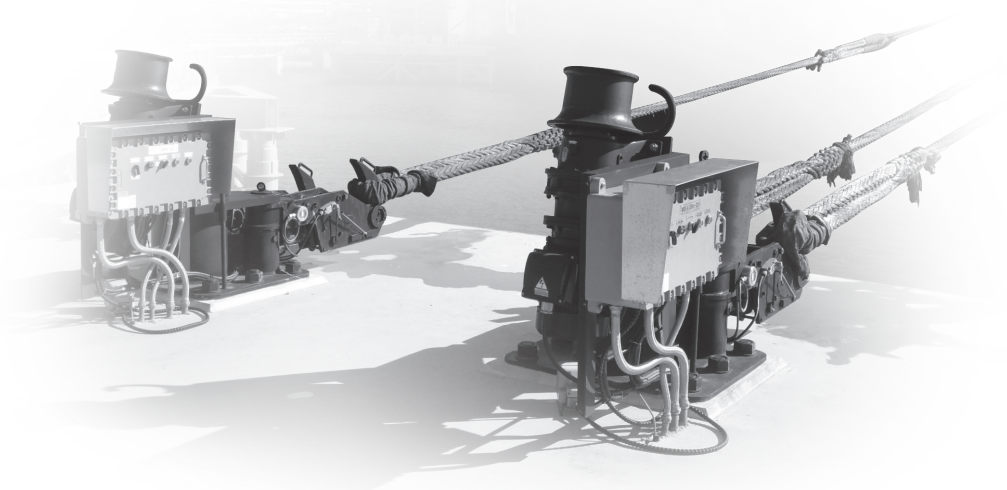


## Capstan Selection Method



For example





**(株)三工社**  
SAMGONG CO., LTD.

**Head Office&Factory**

135, Noksansandan 17 ro, Kangso-ku, Busan, Korea 46751

**TEL** +82 51 200 3040~1 **FAX** +82 51 200 3161

**Web site** <http://www.sam-gong.co.kr>