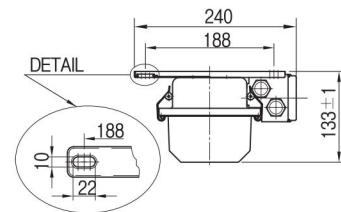
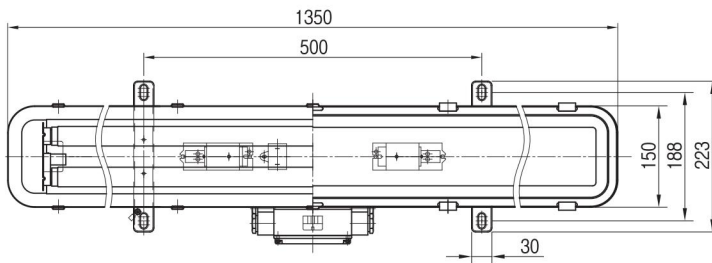
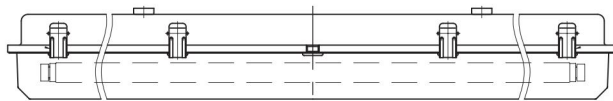


# BSL SERIES

Degree of Protection : **Weather Proof (IP66)**



## Application

**BSL Series Fluorescent Lighting fixtures are used**

- In installations where moisture, dirt, dust, vibration, corrosion and rough usage are problems.
- Indoors or outdoors in industrial locations where enclosed and weather proof fixtures are required.
- Lighting walkways, loading docks or stairways.

## Features

- Simple construction of enclosures.
- Safety operation and ease of maintenance.
- With the electronic ballast or Inductive ballast to be high power factor, and integral emergency light.

## Standard Materials

- Enclosure : Sheet Steel
- Inner Reflector : High purity aluminium
- Cover : Polycarbonate
- Guard : Steel Wire

## Standard Finish

- MUNSELL No. White N-9.3
- If you want another color, contact us please.

### Technical Data

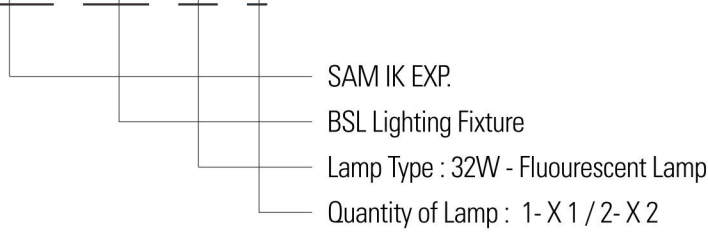
Electrical Ratings	
Rated Voltage	AC110V/220V/240V (*See Below)
Rated Wattage	32W*1 / 32W*2
Rated Frequency	50Hz/60Hz
Entry Size	1/2", 3/4"

### Ordering Number

LAMP	Watt	Catalog No.	Weigh
Fluourescent Lamp	32W X 1	SEBP-BSL321	5.1kg
	32W X 2	SEBP-BSL322	5.5kg

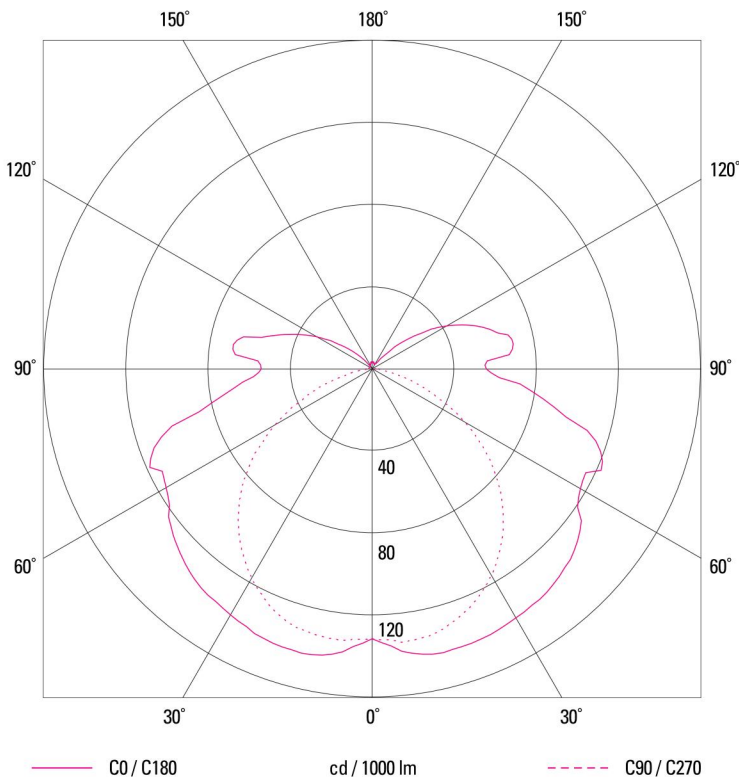
### Ordering Information

**SEBP - BSL - 32 - 1**



**\* Entry Size : 1/2" / 3/4"**

### Photometric Data



	C0	C90	C180
0°	132	132	132
10°	141	134	142
20°	142	128	142
30°	140	116	138
40°	137	99	134
50°	131	78	127
60°	117	52	116
70°	118	26	113
80°	84	6	74
90°	56	1	54
100°	70	2	69
110°	58	1	48
120°	42	1	31
130°	23	1	15
140°	6	1	3
150°	3	1	2
160°	3	3	3
170°	4	3	4
180°	3	3	3
	cd / 1000 lm		