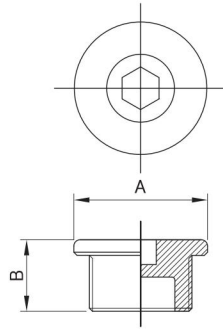


Flame-Proof Fitting Accessories

EP, ED, EB SERIES

Type of Explosion-Proof
Flameproof (Ex d IIC)

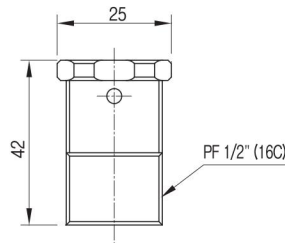
EP



plug

Catalog No.	Thread Size	Dimension	
		A	B
SEBP-EP-16	16C (1/2")	28	19
SEBP-EP-22	22C (3/4")	32	22
SEBP-EP-28	28C (1")	38	28
SEBP-EP-36	36C (1-1/4")	49	28
SEBP-EP-42	42C (1-1/2")	53	33
SEBP-EP-54	54C (2")	68	33
SEBP-EP-70	70C (2-1/2")	84	40
SEBP-EP-82	82C (3")	98	42
SEBP-EP-104	104C (4")	134	46

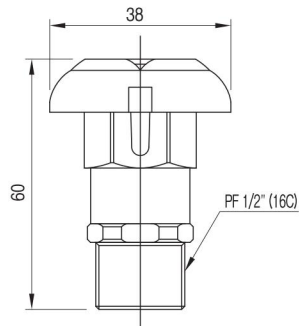
ED



Drain plug

Catalog No.	Thread Size
SEBP-ED-16	16C (1/2")

EB



Breather plug

Catalog No.	Thread Size
SEBP-EB-16	16C (1/2")

Standard Materials

- EP : Die casting Aluminium Alloy
- ED : Stainless Steel
- EB : Brass

Standard Finish

- Natural
- If you want another color, contact us please.

Compliance & Certification

- Notification of Ministry of Labor No. 2010-36
- Certified by KOSHA
(Korea Occupational Safety & Health Agency)