

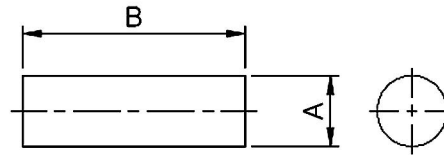
INDUCTOR CORES

Bar Type

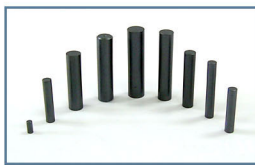


Bar Type

:: Specifications



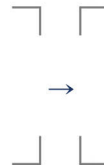
:: Applications



Core



Assembly



Assembly



Fan Motor for Car

:: Core Dimensions

Unit = mm

NO.	MODEL NO.	A	B
1	AR1904	1.90±0.10	4.00±0.10
2	AR1025	9.70±0.15	25.0±0.30
3	AR1030	9.70±0.15	29.9±0.30
4	AR3007	2.95±0.06	7.60±0.25
5	AR3010	3.00±0.10	10.0±0.25
6	AR3013	3.00±0.10	13.0±0.20
7	AR3015	3.00±0.10	15.0±0.20
8	AR3017	3.00±0.10	17.0±0.20
9	AR3019	3.00±0.10	19.0±0.20
10	AR3020	3.00±0.20	20.0±0.40
11	AR3025	3.00±0.30	25.0±0.60
12	AR3512	3.50±0.10	12.0±0.30
13	AR3515	3.50±0.30	15.0±0.30

INDUCTOR CORES

Bar Type

:: Core Dimensions

Unit = mm

NO.	MODEL NO.	A	B
14	AR4015	4.00±0.30	15.0±0.30
15	AR4020	4.00±0.20	20.0±0.50
16	AR4022	4.00±0.20	22.0±0.50
17	AR4025	4.00±0.20	25.0±0.50
18	AR4040	4.00±0.30	40.0±0.60
19	AR5010	5.00±0.10	10.0±0.10
20	AR5012	5.00±0.15	12.0±0.30
21	AR5015	5.00±0.20	15.0±0.50
22	AR5018	5.00±0.15	18.0±0.30
23	AR5020	5.00±0.15	20.0±0.30
24	AR5025	5.00±0.15	25.0±0.30
25	AR5035	5.00±0.10	35.0±0.40
26	AR5524	5.50±0.20	23.5±0.40
27	AR6010	6.00±0.10	10.0±0.10
28	AR6011	6.00±0.10	10.8±0.10
29	AR6015	6.00±0.30	15.0±0.30
30	AR6016	6.00±0.30	16.0±0.30
31	AR6018	6.00±0.30	18.0±0.50
32	AR6019	6.00±0.20	19.0±0.40
33	AR6020	6.00±0.30	20.0±0.30
34	AR6021	6.00±0.30	21.0±0.30
35	AR6022	6.00±0.30	22.0±0.30
36	AR6025	6.00±0.30	25.0±0.30
37	AR6030	6.00±0.30	30.0±0.30
38	AR8522	8.50±0.10	2.20±0.10
39	AR9825	9.80±0.10	2.50±0.10

INDUCTOR CORES

Case Type



Case Type

:: Specifications

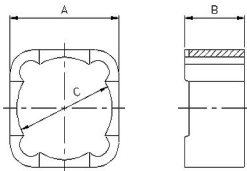


FIG. 1

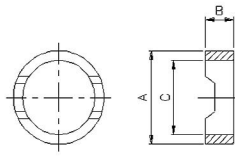


FIG. 2

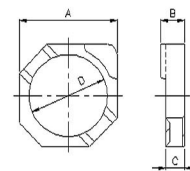


FIG. 3

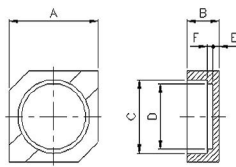


FIG. 4

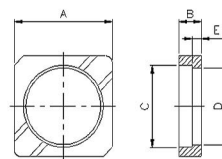


FIG. 5

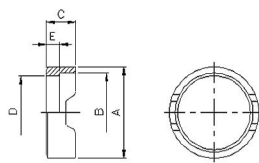


FIG. 6

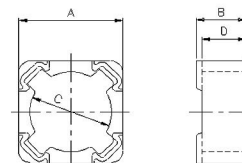


FIG. 7

:: Applications



Core



Assembly



Assembly



General Electric
Appliance

INDUCTOR CORES

Case Type

:: Core Dimensions

Unit = mm

NO.	TYPE	MODEL NO.	A	B	C	D	E
1	FIG.1	CA1250	14.80±0.10	4.80±0.15	12.70±0.10		
2		CA1268	14.80±0.15	6.60±0.15	12.70±0.15		
3	FIG.2	CA2609	2.65±0.07	0.70±0.06	2.05±0.07		
4		CA2613	2.65±0.07	1.00±0.06	2.05±0.07		
5	FIG.3	CA2808	3.00±0.07	0.725±0.07	0.58±0.07	2.40±0.07	
6		CA2810	3.00±0.07	0.875±0.07	0.725±0.07	2.40±0.07	
7	FIG.4	CA2909A	3.80±0.10	1.10±0.06	3.20±0.05	3.00±0.05	0.20±0.06
8		CA2909C	3.85±0.05	1.16±0.06	3.26±0.05	3.06±0.05	0.20±0.05
9		CA2909E	3.80±0.10	1.33±0.05	3.20±0.05	3.00±0.05	0.20±0.06
10	FIG.5	CA2909B	3.80±0.05	0.85±0.07	3.20±0.05	3.03±0.05	0.35±0.15
11	FIG.1	CA2914	3.95±0.10	1.15±0.10	3.15±0.10		
12	FIG.4	CA3409	4.60±0.10	1.10+0.0/-0.1	3.70±0.05	3.50±0.05	0.20±0.06
13		CA3411	4.60±0.10	1.30+0.0/-0.1	3.70±0.05	3.45±0.05	0.30+0.0/-0.1
14	FIG.2	CA3920	3.90±0.10	1.55±0.10	3.10±0.10		
15		CA4512A	4.50±0.10	0.85±0.10	3.70±0.10		
16	FIG.6	CA4512C	5.90±0.10	5.05±0.10	1.00±0.10	3.50±0.05	0.20±0.06
17	FIG.2	CA4516	4.50±0.10	1.25±0.10	3.70±0.10		
18		CA4520	4.50±0.10	1.60±0.10	3.70±0.10		
19	FIG.6	CA4522	5.90±0.10	5.05±0.10	1.90±0.10	4.65±0.10	0.50±0.10
20		CA5426	6.80±0.12	5.90±0.10	2.20±0.10	5.50±0.10	0.60±0.10
21		CA5435	6.80±0.12	5.90±0.10	3.20±0.10	5.50±0.10	0.60±0.10
22	FIG.7	CA5428	7.30±0.10	5.70±0.10	2.70±0.10	3.10±0.10	
23		CA5436	7.30±0.10	3.50±0.10	5.70±0.10	3.10±0.10	
24	FIG.2	CA5462	6.80±0.15	5.70±0.15	5.80±0.15		
25		CA7040	9.90±0.15	3.60±0.10	8.40±0.10		
26	FIG.1	CA9838	12.0±0.20	3.80±0.20	10.65±0.10		
27		CA9843	12.0±0.25	4.10±0.15	10.50±0.15		
28		CA9849	12.1±0.10	4.80±0.10	10.50±0.20		
29		CA9870	12.2±0.20	6.80±0.15	10.60±0.20		

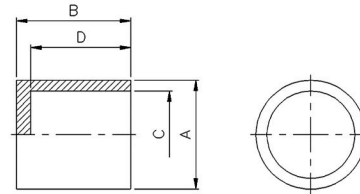
INDUCTOR CORES

Cup Type



Cup Type

:: Specifications



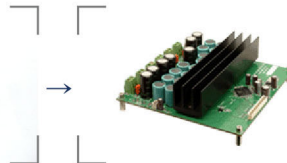
:: Applications



Core



Assembly



Assembly



Home Theater

:: Core Dimensions

Unit = mm

NO.	MODEL NO.	A	B	C	D
1	CUP1010-SC2	10.00±0.20	9.50±0.20	8.00±0.20	8.30±0.20
2	CUP1013-SC2	10.00±0.15	12.80±0.15	8.00±0.15	11.60±0.15
3	CUP1309-SC6	12.7+0.2/-0.1	9.50±0.20	10.20+0.2/-0.1	7.90±0.20
4	CUP1313-SC6	12.7+0.2/-0.1	13.15±0.20	10.20+0.2/-0.1	11.55±0.20
5	CUP1316-SC2	12.7+0.2/-0.1	16.50±0.20	10.20+0.2/-0.1	14.90±0.20
6	CUP1513-SC2	15.20±0.20	12.55±0.20	12.20±0.20	11.05±0.20
7	CUP1518-SC2	15.20±0.20	18.50±0.20	12.20±0.20	17.00±0.20

INDUCTOR CORES

DB Type



DB Type

:: Specifications

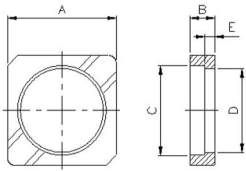


FIG. 1

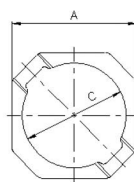


FIG. 2

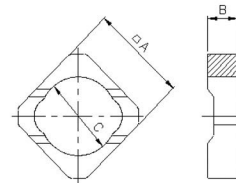


FIG. 3

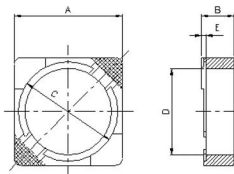


FIG. 4

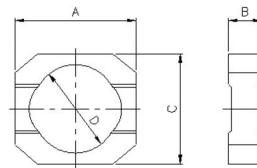


FIG. 5

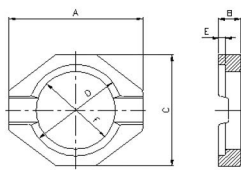


FIG. 6

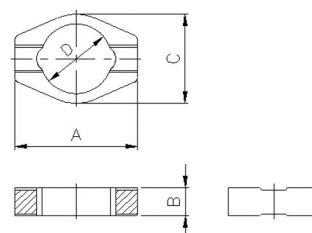


FIG. 7

:: Applications



Core



Assembly



Assembly



Cellular Phone

INDUCTOR CORES

DB Type

:: Core Dimensions

Unit = mm

NO.	TYPE	MODEL NO.	A	B	C	D	E	F
1	FIG.1	DB1409	2.05±0.05	0.85±0.05	1.60±0.05	1.50±0.05	0.30±0.05	
2		DB2209	3.00±0.07	0.85±0.05	2.40±0.05	2.30±0.05	0.30±0.05	
3		DB2310	3.20±0.10	0.98±0.05	2.55±0.05	2.45±0.05	0.30±0.10	
4	FIG.2	DB2410	3.00±0.07	1.00±0.06	2.50±0.07			
5	FIG.3	DB2411	3.30±0.10	1.00±0.10	2.60±0.10			
6	FIG.1	DB3409B	4.60±0.10	0.85±0.05	3.70±0.05	3.55±0.05	0.40±0.10	
7		DB3411B	4.60±0.10	1.10+0/-0.1	3.70±0.05	3.55±0.05	0.60+0.2/-0.1	
8	FIG.4	DB3412B	3.80+0/-0.1	1.10±0.10	3.40+0/-0.1	3.00+0/-0.1	0.20±0.05	
9		DB3416B	3.80+0/-0.1	1.50±0.10	3.40+0/-0.1	3.00+0/-0.1	0.20±0.05	
10		DB4512B	5.00±0.20	1.10±0.10	4.60+0/-0.1	4.00±0.10	0.20±0.10	
11		DB5015	4.90±0.10	1.50±0.10	4.60+0/-0.1	4.00±0.10	0.20±0.10	
12	FIG.5	DB4310	4.32+0/-0.1	1.00±0.05	3.80±0.10	3.05±0.05		
13		DB4316	4.32+0/-0.1	1.60±0.05	3.80±0.10	3.10±0.05		
14	FIG.6	DB6609	6.6+0/-0.1	0.90±0.05	5.50+0/-0.1	4.6+0/-0.1	0.20±0.05	4.0+0/-0.1
15		DB6611	6.60+0/-0.1	1.10±0.05	5.5+0/-0.1	4.6+0/-0.1	0.20±0.05	4.00+0/-0.1
16		DB6615	6.60+0/-0.1	1.50±0.10	5.5+0/-0.1	4.6+0/-0.1	0.20±0.05	4.00±0.10
17	FIG.7	DB6213	6.20±0.10	1.30±0.05	4.60±0.10	3.60±0.05		
18		DB6216	6.20±0.10	1.60±0.05	4.60±0.10	3.60±0.05		
19		DB6217	6.20±0.10	1.70±0.05	4.60±0.10	3.60±0.05		

INDUCTOR CORES

DR Type



DR Type

:: Specifications

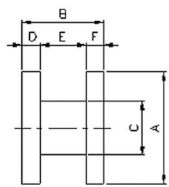


FIG.1

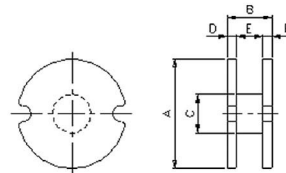
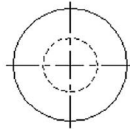


FIG.2

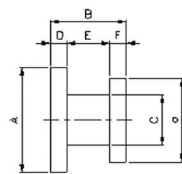
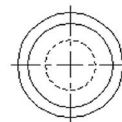


FIG.3



:: Applications



Core



Assembly



Assembly



Cellular Phone

INDUCTOR CORES

DR Type

:: Core Dimensions

Unit = mm

NO.	TYPE	MODEL NO.	A	B	C	D	E	F	a
1	FIG.1	DR1010	10.0+0/-0.25	10.00±0.25	4.25±0.15	2.40±0.15	5.20±0.20	2.40±0.15	
2		DR1011	10.0+0/-0.25	11.00±0.25	3.50±0.15	2.00±0.15	7.00±0.20	2.00±0.15	
3		DR1012	10.0+0/-0.25	12.00±0.25	4.00±0.15	2.30±0.15	7.40±0.20	2.30±0.15	
4		DR1220	12.00+0.15/-0.2	20.00±0.30	6.00±0.20	3.00±0.20	14.00±0.20	3.00±0.20	
5		DR1240	12.00±0.15	4.00±0.10	5.90±0.15	0.85±0.10	2.30±0.10	0.85±0.10	
6		DR1250	12.00+0/-0.2	4.90±0.20	5.50±0.15	1.15±0.15	2.60±0.15	1.15±0.15	
7		DR1260	12.00+0.25/-0	6.00±0.15	5.80±0.15	1.20±0.15	3.60±0.15	1.20±0.15	
8		DR1268	12.00+0.25/-0	6.80±0.15	6.50±0.15	1.20±0.15	4.40±0.15	1.20±0.15	
9		DR1270	12.00+0.25/-0	7.00±0.15	6.50±0.15	1.10±0.15	4.80±0.15	1.10±0.15	
10		DR1415	14.0+0.1/-0.3	15.00±0.25	5.20±0.15	2.50±0.20	10.0±0.20	2.50±0.20	
11		DR1515	15.00±0.20	15.2±0.15	5.00±0.20	2.35±0.15	10.50±0.20	2.35±0.15	
12		DR1518	15.00±0.20	18.0±0.20	7.70±0.10	3.00±0.20	12.0±0.20	3.00±0.20	
13		DR1409	1.40±0.05	0.90±0.05	0.65±0.05	0.25 REF	0.40±0.06	0.25 REF	
14		DR1818	1.80±0.05	1.80±0.05	1.00+0.05/-0	0.45±0.05	0.90±0.05	0.45±0.05	
15	FIG.2	DR2209	2.20±0.06	0.90±0.06	1.00±0.06	0.275 REF	0.35±0.06	0.275 REF	
16		DR2310	2.35±0.07	1.00±0.05	1.00±0.05	0.25 REF	0.50±0.05	0.25 REF	
17		DR2314	2.30±0.07	1.40±0.05	1.10±0.05	0.30 REF	0.80±0.05	0.30 REF	
18		DR2410	2.40±0.07	1.00±0.06	1.00±0.05	0.25 REF	0.50±0.06	0.25 REF	
19	FIG.3	DR2609	2.65±0.05	0.95±0.07	1.00±0.07	0.25+0.07/-0	0.40±0.05	0.25+0.07/-0	1.65±0.05
20		DR2613	2.65±0.05	1.30±0.06	1.15±0.06	0.30 REF	0.70±0.05	0.30 REF	1.65±0.05
21		DR2808	2.80±0.07	0.85±0.07	0.85±0.05	0.25±0.07	0.35±0.07	0.25±0.07	2.00±0.07
22		DR2810	2.80±0.05	1.05±0.05	1.20±0.05	0.275±0.05	0.50±0.05	0.275±0.07	2.05±0.03
23	FIG.2	DR2909	2.90±0.07	0.90±0.07	1.10±0.05	0.30 REF	0.30±0.05	0.30 REF	
24	FIG.1	DR2914H	2.90±0.07	1.35±0.07	1.35±0.05	0.35±0.07	0.65±0.07	0.35±0.07	
25	FIG.2	DR3409	3.40±0.05	0.90±0.05	1.20±0.05	0.30±0.05	0.30±0.05	0.30±0.05	
26		DR3411	3.40±0.05	1.10±0.05	1.40±0.05	0.30±0.05	0.50±0.05	0.30±0.05	
27		DR3411B	3.40±0.05	1.10±0.05	1.50±0.05	0.30±0.05	0.50±0.05	0.30±0.05	
28	FIG.3	DR3412	3.30+0/-0.1	1.15±0.05	1.20±0.10	0.28±0.05	0.60±0.05	0.27 REF	2.70+0/-0.1
29		DR3416	3.30+0/-0.1	1.60±0.10	1.70±0.10	0.33±0.05	0.94±0.10	0.33±0.05	2.70+0/-0.1

INDUCTOR CORES

DR Type

:: Core Dimensions

Unit = mm

NO.	TYPE	MODEL NO.	A	B	C	D	E	F	a
30	FIG.1	DR3511C	3.50±0.10	1.10±0.07	1.50±0.05	0.30±0.05	0.50±0.05	0.30±0.05	
31		DR3514	3.50±0.10	1.40±0.10	1.50±0.10	0.37 REF	0.65±0.05	0.37 REF	
32	FIG.3	DR3516	3.45±0.10	1.60±0.10	1.10±0.10	0.35±0.10	0.90±0.10	0.35±0.10	2.55±0.10
33	FIG.1	DR3613	3.55+0.1/-0.05	1.30±0.10	1.50±0.10	0.30±0.07	0.70±0.07	0.30±0.07	
34		DR3622	3.55±0.05	2.20±0.05	1.40±0.10	0.35±0.05	1.50±0.10	0.35±0.05	
35	FIG.3	DR4509	4.50+0/-0.1	0.90±0.05	1.60±0.10	0.30±0.05	0.30±0.05	0.30±0.05	3.70+0/-0.1
36		DR4512	4.50+0/-0.1	1.20±0.05	1.60±0.10	0.33±0.05	0.54±0.05	0.33±0.05	3.70+0/-0.1
37		DR4516	4.50±0.10	1.60±0.10	1.50±0.10	0.35±0.10	0.90±0.10	0.35±0.10	3.50±0.10
38	FIG.2	DR4518H	4.50±0.10	1.80±0.10	1.75±0.10	0.45±0.08	0.90±0.10	0.45±0.08	
39	FIG.1	DR5410	5.40±0.10	1.00±0.10	2.80±0.07	0.35 REF	0.30±0.07	0.35 REF	
40		DR5426	5.40+0/-0.2	2.60±0.10	2.30±0.10	0.60±0.10	1.40±0.10	0.60±0.10	
41		DR5428	5.30±0.10	2.80±0.10	2.80±0.10	0.65±0.10	1.50±0.10	0.65±0.10	
42		DR5435	5.4+0/-0.2	3.60±0.10	2.30±0.10	0.60±0.10	2.40±0.10	0.60±0.10	
43		DR5436	5.30±0.10	3.60±0.10	2.80±0.10	0.65±0.10	2.30±0.10	0.65±0.10	
44	FIG.2	DR5462	5.40±0.15	6.2±0.15	4.00±0.15	0.70±0.10	4.80±0.15	0.70±0.10	
45	FIG.1	DR6010	6.00±0.10	10.0±0.15	2.20±0.10	1.50±0.12	7.00±0.12	1.50±0.12	
46	FIG.3	DR6414	6.4+0/-0.1	1.35+0.1/-0	2.18±0.05	0.40±0.04	0.60±0.08	0.40±0.04	5.05+0.1/-0
47	FIG.1	DR7040	7.00±0.15	4.00±0.10	5.00±0.10	0.80±0.10	2.40±0.10	0.80±0.10	
48		DR8010	8.00±0.20	10.00±0.20	3.00±0.15	2.05 REF	5.90±0.15	2.05 REF	
49		DR8040	8.00±0.10	4.00±0.10	4.00±0.10	0.80±0.10	2.40±0.10	0.80±0.10	
50		DR8060	8.00±0.10	6.00±0.10	6.00±0.10	1.20 REF	3.60±0.10	1.20 REF	
51		DR8070	8.00±0.10	7.00±0.10	6.00±0.10	1.50 REF	4.00±0.08	1.50 REF	
52	FIG.2	DR8520	8.50±0.10	2.00±0.10	3.50±0.10	0.55±0.10	0.90±0.10	0.55±0.10	
53	FIG.1	DR8522	8.50±0.10	2.25±0.10	3.20±0.10	0.73±0.10	0.79±0.10	0.73±0.10	
54		DR8528	8.50±0.10	2.80±0.10	3.20±0.10	1.00±0.10	0.80±0.10	1.00±0.10	
55	FIG.3	DR9836	9.80±0.15	3.60±0.10	5.30±0.15	0.90±0.10	1.80±0.10	0.90±0.10	7.50±0.15
56	FIG.1	DR9843	9.85±0.15	4.30±0.15	5.00±0.15	0.90±0.10	2.50±0.10	0.90±0.10	
57		DR9849	9.80±0.10	4.90±0.15	5.50±0.15	1.10±0.10	2.70±0.10	1.10±0.10	
58		DR9870	9.80±0.10	7.00±0.15	6.20±0.15	1.10±0.10	4.80±0.10	1.10±0.10	

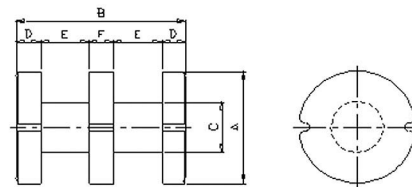
INDUCTOR CORES

DR etc.



2-DRUM Type

:: Specifications



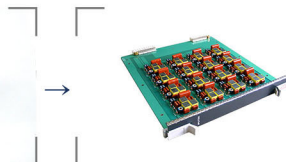
:: Applications



Core



Assembly



Assembly



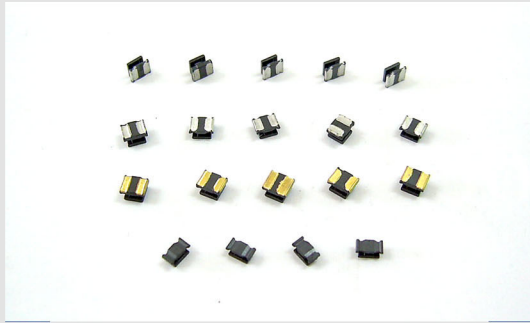
XDSL

:: Core Dimensions

Unit = mm

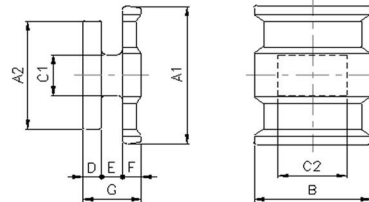
NO.	MODEL NO.	A	B	C	D	E	F
1	2DR1213	12.0+0.1/-0.15	9.50±0.20	5.50±0.15	2.00±0.20	3.75±0.10	1.30±0.10
2	2DR1217	12.7+0/-0.25	12.80±0.15	5.50±0.15	2.50±0.20	5.00±0.15	2.50±0.20

INDUCTOR CORES DR etc.

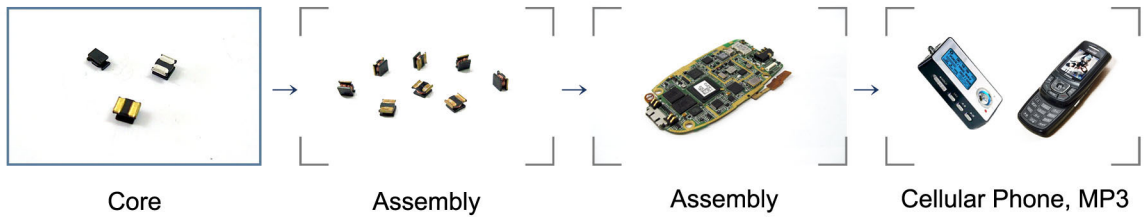


SQD Type

:: Specifications



:: Applications



:: Core Dimensions

Unit = mm

NO.	MODEL NO.	A	B	C	D	E	F	a(A2)	G
1	SQD3215	3.20±0.10	2.50±0.10	0.95±0.10	0.43±0.10	0.60±0.10	0.43±0.10	2.50±0.10	1.46±0.10
2	SQD3220	3.20±0.10	2.50±0.10	1.00±0.10	0.50±0.10	0.70±0.10	0.70±0.10	2.50±0.10	

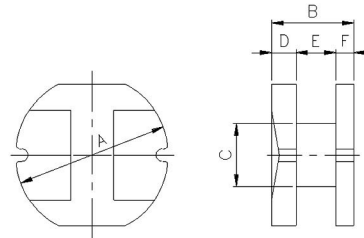
INDUCTOR CORES

DR etc.

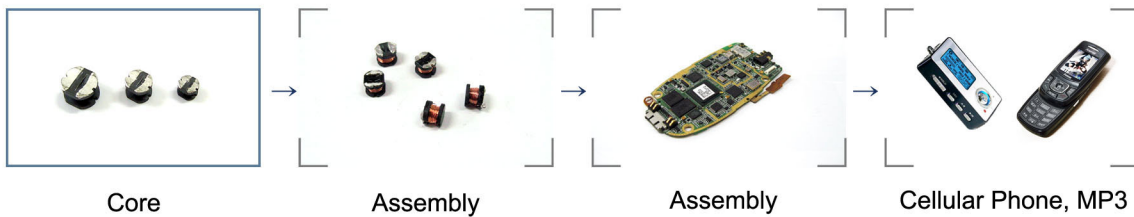


SDR Type

:: Specifications



:: Applications



:: Core Dimensions

Unit = mm

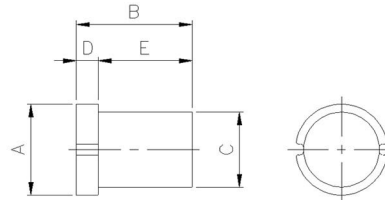
NO.	MODEL NO.	A	B	C	D	E	F
1	SDR4532	4.50±0.10	3.20±0.10	2.00±0.10	1.10±0.10	1.50±0.10	0.60±0.10
2	SDR5845	5.80±0.10	4.50±0.10	2.80±0.10	1.30±0.10	2.30±0.10	0.90±0.10
3	SDR7835	7.80±0.15	3.50±0.15	2.80±0.15	1.20±0.10	1.50±0.10	0.80 REF

INDUCTOR CORES DR etc.



TDRUM Type

:: Specifications



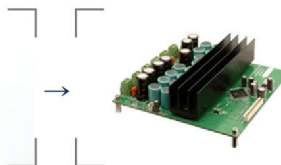
:: Applications



Core



Assembly



Assembly



Home Theater

:: Core Dimensions

Unit = mm

NO.	MODEL NO.	A	B	C	D	E
1	DR8512P	8.50+0/-0.25	10.75±0.10	6.95+0/-0.20	2.00±0.20	8.75±0.20
2	DR8514P	8.50+0/-0.25	14.00±0.20	6.95+0/-0.20	2.00±0.20	12.00±0.20
3	DR9716P	9.70±0.15	16.0±0.15	8.00±0.15	2.00±0.10	14.00±0.10

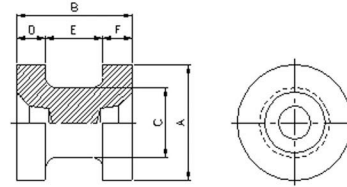
INDUCTOR CORES

DR etc.



LA Type

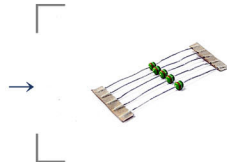
:: Specifications



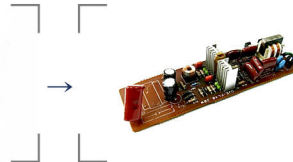
:: Applications



Core



Assembly



Assembly



Game Machine,
Computer

:: Dimensions & Impedance

Unit = mm

NO.	Model No.	A	B	C	D	E
1	DR1820	1.8+0/-0.1	2.0±0.1	1.10±0.07	0.06±0.07	0.08±0.07
2	DR2234	2.2+0/-0.1	3.4±0.1	1.4±0.07	0.85±0.07	1.70+0.07
3	DR3022	3.0±0.05	2.2±0.1	1.35±0.07	0.57±0.07	1.06±0.07
4	DR3055	3.0+0.05/-0.07	5.5±0.15	1.80±0.05	1.18±0.1	3.15+0.1/-0.05