

SHAFT TYPE TORQUE TRANSDUCERS

MODEL

SBM

Feature

- 회전하는 물체의 연속적인 토크 측정
- Strain Gauge 방식으로 브러쉬와 슬립링을 사용하여 정밀도가 높다.

Application

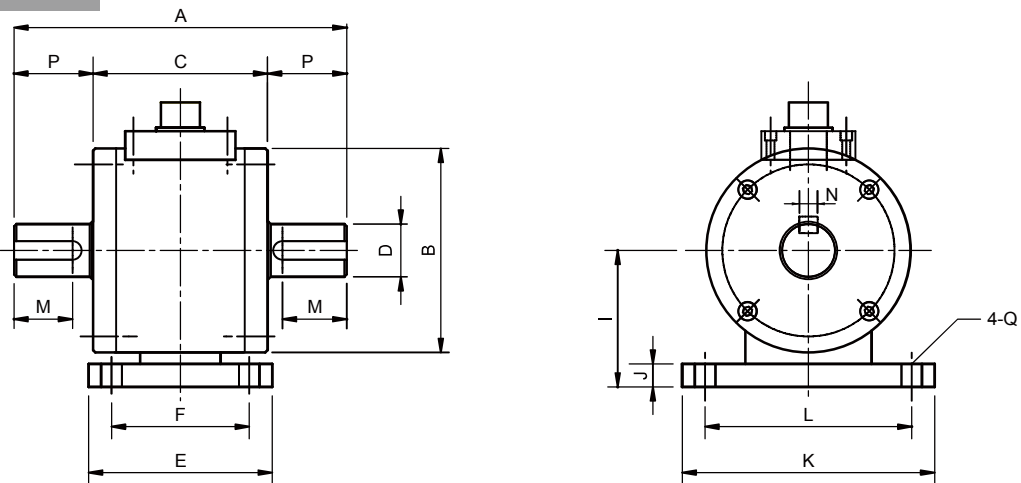
- Motor의 동력 Test
- 감속기의 부하 Test
- 볼트, 너트 규정 Torque 체결장치
- 클러치, 브레이크 Test
- 클러치, 변속기, 브레이크의 특성 Test



Specification

Rated capacity	1kgf ~ 200kgf-m
Rated output	1.5mV/V ± 1%
Nonlinearity	0.1% of R.O
Hysteresis	0.1% of R.O
Repeatability	0.1% of R.O
Terminal resistance input	350 ± 3.5Ω
Terminal resistance output	350 ± 3.5Ω
Insulation resistance	200MΩ
Temperature range compensated	0.3% R.O/10°C
Temperature range safe	0.2% Load/10°C
Excitation recommended	10V DC
Safe overload	150% R.C

Dimension



Dimension

Capacity	A	∅B	C	∅D	E	F	I	J	K	L	M	N	Q	P
1,2kgf-m	140	89	76	20	80	60	59.5	10	110	90	25.5	6	9	32
5,10kgf-m	145	89	76	23	80	60	59.5	10	110	90	28	8	9	34.5
20,50kgf-m	193	110	88	38	90	70	70	10	120	100	45	10	9	52.5
100,200kgf-m	255	118	95	52	100	80	78	13	135	115	70	16	11	80