

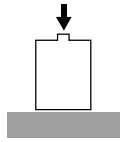
COMPRESSIONS LOAD CELLS

MODEL

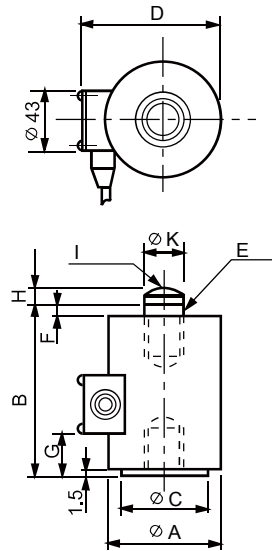
SCX

Feature

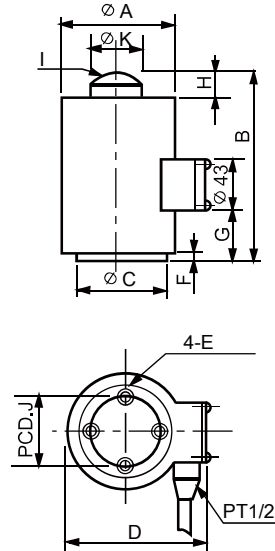
고강도 합금강을 사용한 밀폐형 로드셀로 내환경성이 우수
호퍼스케일, 탱크스케일 등의 정밀도가 요구되는 시트에 적합.
중, 고중량 압축 로드셀
보호등급 IP67



100kgf ~ 5tf



10tf ~ 500tf



Dimension (unit:mm)

Capacity	ΦA	B	ΦC	D	E	F	G	H	I	J	ΦK	Weight (kg)
100,200,500kgf, 1tf	88	107	50	118	M12×1.25 DP15	4	25	9	25	-	24	3
2tf	88	150	66	118	M24×2 DP30	5	42	20	60	-	42	4.5
3tf	88	150	66	118	M24×2 DP30	5	42	20	60	-	42	4.5
5tf	88	150	66	118	M24×2 DP30	5	42	20	60	-	42	4.5
10tf	93	127	80	129	M12×1.75 DP20	2	42	15	140	60	38	5
20tf	93	147	80	129	M12×1.75 DP20	2	50	15	140	60	38	5.5
30tf	93	147	80	129	DP20	2	50	15	140	60	38	5.5
50tf	137	165	110	170	M12×1.75 DP20	2	75	20	180	80	50	10
100tf	166	210	140	198	M16×2 DP20	2	100	20	200	100	70	28
200tf	216	250	180	246	M16×2 DP20	2	120	30	300	130	95	45
300tf	216	320	180	246	M24×3 DP35	2	160	30	600	130	120	50
500tf	256	400	238	283	M30×3.5 DP50	7	200	20	800	200	170	65

Specification

Specification	SCXH	SCXM	SCXG
Rated capacity (R.C)	1,2,3,5,10,20tf	100,200,500kgf, 1,2,3,5,10,20,30,50,100,200,300,500tf	
Rated output (R.O)	2mV/V ±0.1%	2mV/V ±0.1% (50~500tf : 1.5mV/V ±0.1%)	
Nonlinearity	0.02% of R.O.	0.05% of R.O.	0.1% of R.O.(200,300,500tf:0.5% of R.O)
Hysteresis	0.02% of R.O.	0.05% of R.O.	0.1% of R.O.(200,300,500tf:0.5% of R.O)
Repeatability	0.02% of R.O.	0.05% of R.O.	0.1% of R.O.
Zero balance	±1% R.O	±1% R.O	±1% R.O
Terminal resistance input	350 ±5Ω	350 ±5Ω	350 ±5Ω
Terminal resistance output	350 ±5Ω	350 ±5Ω	350 ±5Ω
Insulation resistance	5000MΩ	5000MΩ	5000MΩ
Temperature range, compensated	-10 ~ 60℃	-10 ~ 60℃	-10 ~ 60℃
Temperature range, safe	-20 ~ 80℃	-20 ~ 80℃	-20 ~ 80℃
Temperature effect, on zero balance	0.03% R.O./10℃	0.03% R.O./10℃	0.1% R.O./10℃
Temperature effect, on rated output	0.03% LOAD/10℃	0.03% LOAD/10℃	0.1% LOAD/10℃
Excitation recommended	10V	10V	10V
Safe overload	150% R.C	150% R.C	150% R.C
Cable length	Φ7mm, 4core, 3m	Φ7mm, 4core, 3m	Φ7mm, 4core, 3m