

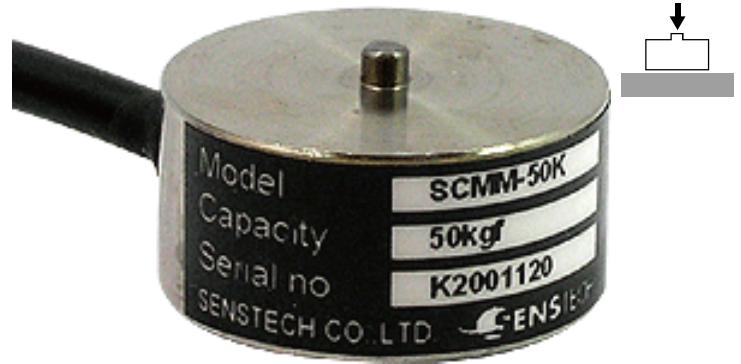
# MINIATURE COMPRESSION LOAD CELLS

MODEL

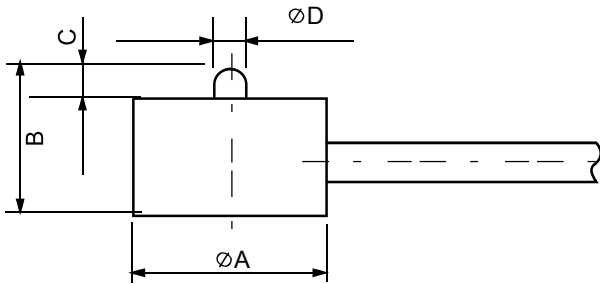
# SCMM

## Feature

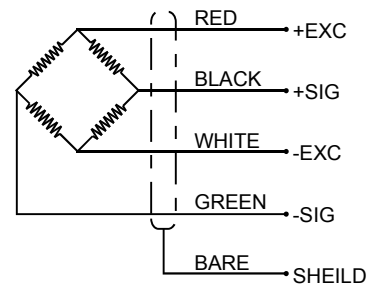
초소형 압축로드셀로 협소한 공간의 각종 계측장치에 적용  
설치조건에 따라 다양한 제품을 주문제작  
스테인레스강 사용 (17-4PH)



## Dimension



## Wiring information



## Dimension (unit:mm)

Capacity	A	B	C	D	Weight (kg)
1kgf	16	12	2	2.5	0.2
2kgf	16	12	2	2.5	0.2
5kgf	16	12	2	2.5	0.2
10kgf	20	11.5	2	2.5	0.2
20kgf	20	11.5	2	2.5	0.2
50kgf	20	11.5	2	2.5	0.2
100kgf	20	11.5	2	2.5	0.2

## Specification

Specification	Accuracy
Rated capacity (R.C)	1, 2, 5, 10, 20, 50, 100kgf
Rated output (R.O)	0.7mV/V to 1.2mV/V
Nonlinearity	1% of R.O.
Hysteresis	1% of R.O.
Repeatability	1% of R.O.
Zero balance	±5% of R.O
Terminal resistance input	350 ± 10%
Terminal resistance output	350 ± 5%
Temperature range, allowable	-20 ~ 70°C
Excitation recommended	5V DC
Safe overload	150% R.C
Cable length	Φ3 4core cable, 3m