

TENSION LOAD CELLS

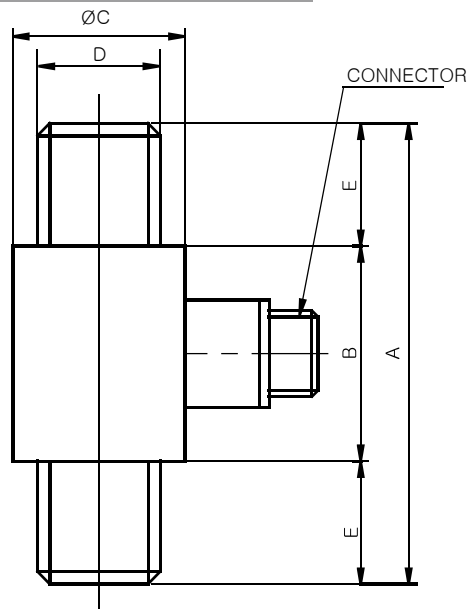
MODEL

STX25

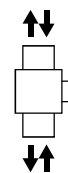
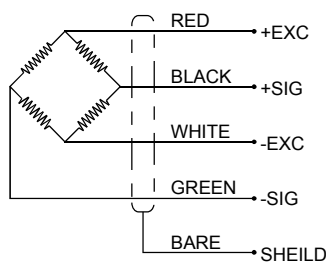
Feature

인장 압축형 로드셀로 위아래 탭으로 설치가 간편
중 고중량의 인장 압축시험에 적합

Dimension



Wiring information



Dimension (unit:mm)

Capacity	A	B	ØC	D	E	Weight (kg)
100kgf	75	35	28	M16×1.5	20	0.5
200kgf	75	35	28	M16×1.5	20	0.5
500kgf	75	35	28	M16×1.5	20	0.5
1tf	75	35	28	M20×1.5	20	0.5
2tf	75	35	28	M20×1.5	20	0.5
3tf	75	35	28	M20×1.5	20	0.5
5tf	75	35	33	M24×2	20	0.7
10tf	170	100	62.5	M39×2	35	2.5
20tf	190	100	63	M45×1.5	50	2.8
50tf	245	105	85	M64×2	70	7.5
100tf	340	140	115	M80×2	100	18
200tf	390	160	150	M110×2	115	36
300tf	450	194	169	M125×4	128	46

Specification

Specification	Accuracy
Rated capacity (R.C)	100, 200, 500kgf, 1, 2, 3, 5, 10, 20, 50, 100, 200, 300tf
Rated output (R.O)	1mV/V ±1%
Nonlinearity	0.15% of R.O.
Hysteresis	0.15% of R.O.
Repeatability	0.1% of R.O.
Creep	0.05% of R.O.
Zero balance	±1% of R.O.
Terminal resistance input, output	350Ω ±5%
Insulation resistance	2000MΩ
Temperature range, compensated	-10 ~ 60℃
Temperature range, safe	-20 ~ 80℃
Temperature effect, on zero balance	±0.02% R.O./10℃
Temperature effect, on rated output	±0.01% LOAD/10℃
Excitation recommended	10V
Safe overload	120% R.C
Cable length	Φ5, 4core, 3m