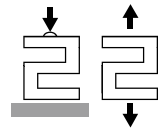


UNIVERSAL LOAD CELLS

MODEL

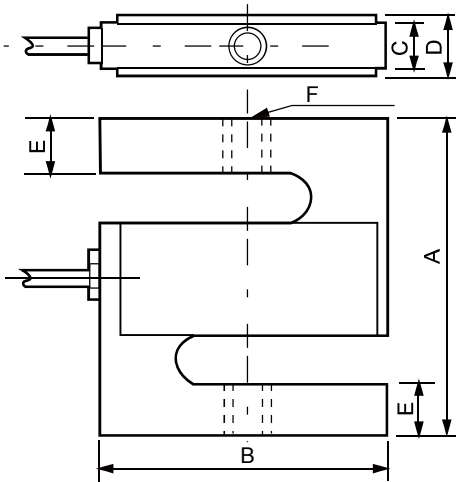
SUU



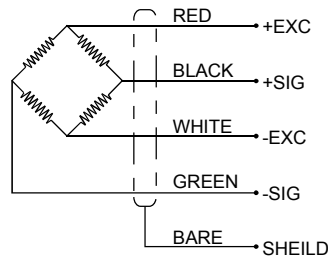
Feature

알루미늄 소재를 사용한 인장 압축형으로 사용이 가능한 소형 모델
 가격이 저렴하며 방습처리된 제품으로 실내 사용에 적합합니다.
 각종시험기, 호퍼스케일 등에 사용
 직선성, 반복성, 정밀도가 우수

Dimension



Wiring information



Dimension (unit:mm)

Capacity	A	B	C	D	E	F	Weight (kg)
2,5kgf	60	50	13	16	10	M6×1	0.4
10,20kgf	70	52	13	18	13	M6×1	0.4
50,100,200kgf	70	52	18	24	13	M12×1.75	0.4
500kgf, 1tf	70	62	22	25	15	M12×1.75	0.8
2tf	96	84	30	35	21	M20×1.5	2
3tf	120	96	35	41	30	M24×2	3
5tf	120	96	40	44	30	M24×2	3
10tf	165	140	60	66	46	M39×2	8.5

Specification

Specification	Accuracy
Rated capacity (R.C)	2,5,10,20,50,100,200,500kgf, 1,2,3,5,10tf
Rated output (R.O)	2mV/V±1% (2kgf,5kgf : 1.5mV/V±1%)
Nonlinearity	0.03% of R.O.
Hysteresis	0.03% of R.O.
Repeatability	0.03% of R.O.
Zero balance	±2% of R.O.
Terminal resistance input	350 ±50Ω
Terminal resistance output	350 ±2Ω
Insulation resistance	2000MΩ
Temperature range, compensated	-10 ~ 60℃
Temperature range, safe	-20 ~ 80℃
Temperature effect, on zero balance	0.1% R.O./10℃
Temperature effect, on rated output	0.05% LOAD/10℃
Excitation recommended	10V
Safe overload	150% R.C
Cable length	Φ5, 4core, 3m