

MINIATURE COMPRESSION & TENSION LOAD CELLS

MODEL

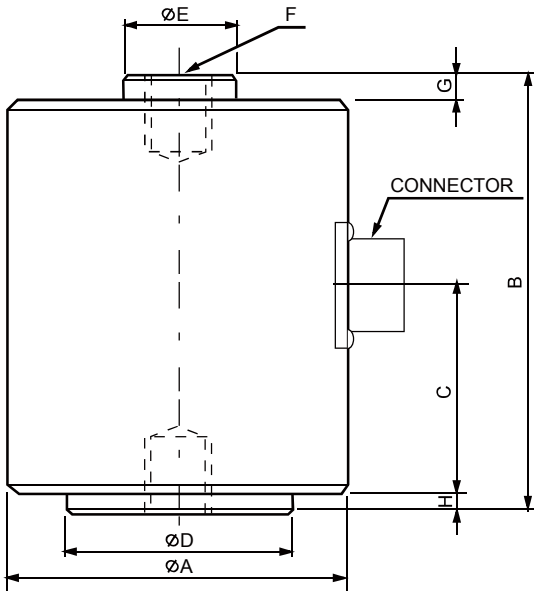
SUMI

Feature

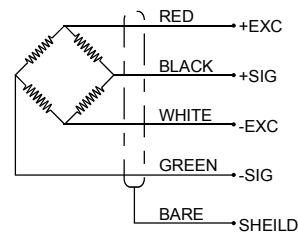
다양한 용량의 인장 압축이 가능한 로드셀로서
정밀도가 높습니다.
계량시스템, 압입하중 관리용이나 정밀한
하중시험기에 적합합니다.



Dimension



Wiring information



Dimension (unit:mm)

Capacity	ØA	B	C	ØD	ØE	ØF	G	H	Weight(kg)
100,200,500gf	52	45	23	47	10.5	M4x0.7DP8	7	1	0.5
1kgf	52	45	23	47	10.5	M6x1.0DP8	7	1	0.5
2,5kgf	52	45	23	47	12	M6x1.0DP8	7	1	0.5
10,20,50,100,200,500kgf	60	80	37	40	20	M12x1.75DP15	5	3	1
1tf	60	80	37	40	20	M12x1.75DP15	5	3	2
2tf	88	110	51	80	36	M18x1.5DP22	5	3	3

Specification

Specification	Accuracy
Rated capacity (R.C)	100,200,500gf, 1,2,5,10,50,100,200,500kgf, 1,2tf
Rated output (R.O)	2mV/V ± 1% (100gf~5kgf=1mV/V)
Nonlinearity	0.3% of R.O.
Hysteresis	0.3% of R.O.
Repeatability	0.3% of R.O.
Zero balance	±2% of R.O.
Terminal resistance input	350 ± 1%
Terminal resistance output	350 ± 1%
Insulation resistance	2000MΩ
Temperature range, compensated	-10 ~ 50°C
Temperature range, safe	-20 ~ 80°C
Temperature effect, on zero balance	0.05% R.O./10°C
Temperature effect, on rated output	0.1% LOAD/10°C
Excitation recommended	10V (100gf ~ 5kgf = 5V)
Safe overload	120% R.C
Cable length	Φ5 ± 0.5 ,4core, 3m