

# Model PCL

## Ceramic Diaphragm Type Corrosion Proof Pressure Transducer

### Description

PCL model is suitable for corrosion resistant environment since it uses ceramic pressure cell and Teflon body. Output of 1~5V or 4~20mA(2Wire), it may be interfaced with various controllers.

### Features

- ▶ Built-in amplifier circuit(VDC, mA)
- ▶ Measuring range 0~1MPa
- ▶ 0.5%FS accuracy
- ▶ Piezoresistive ceramic cell
- ▶ PP or PVC, ceramic( $Al_2O_3$ ) media-wetted materials

### Applications

- ▶ Semiconductor Manufacturing Equipment
- ▶ High-purity Fluids
- ▶ Chemical Process
- ▶ Physics and Chemistry Equipment
- ▶ Waste Disposing Equipment



### Specifications

#### Range

0 ~ 100kPa ... 1MPa (Gauge)

#### Performance

Accuracy	±0.5%FS(RSS)
Thermal Effect on Zero	±0.06%FS/°C
Thermal Effect on Span	±0.06%FS/°C
Compensated Temperature Range	-10 ~ 70°C
Operating Temperature Range	-20 ~ 80°C

#### Electrical

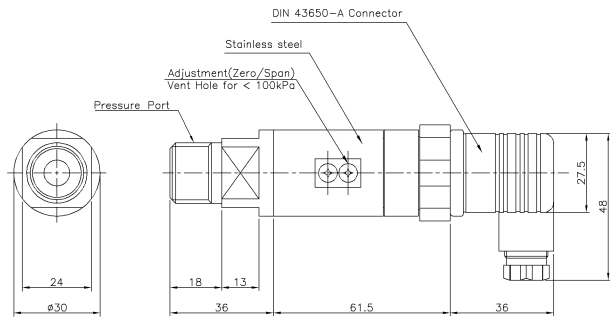
Excitation	11 ~ 28VDC
Output	0~5VDC, 1~5VDC, 0~10VDC, 4~20mA(2, 3Wire)
Electrical Connection	DIN Connector

#### Physical

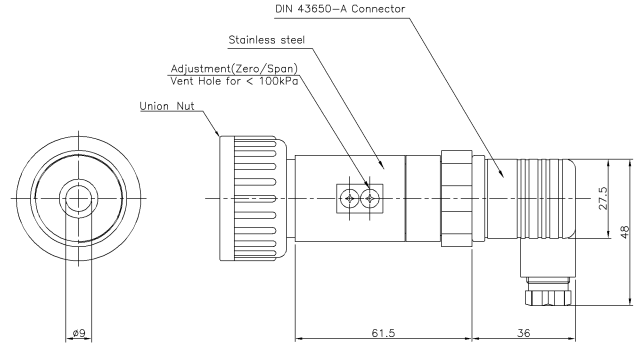
Proof Pressure	150%FS Max.
Burst Pressure	200%FS Min.
Vibration	49.1m/s <sup>2</sup> {5G}, 10~500Hz
Shock	490m/s <sup>2</sup> {50G}
Pressure port	R(PT)1/2", G(PF)1/2", Union
Media-Wetted Materials	PP or PVC, Ceramic( $Al_2O_3$ 96%), VITON
Weight	Approx. 200g (Sensor Only)

## Dimension

### ▶ Thread Type



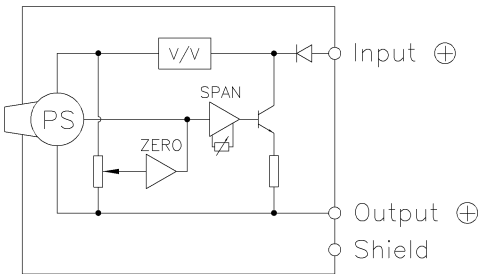
### ▶ Union Type



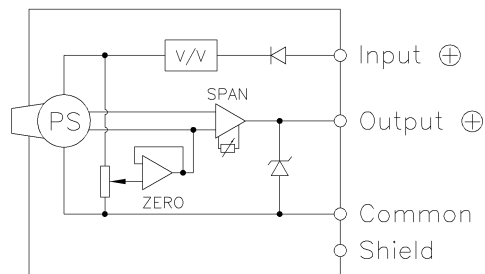
Pin No.	Connections	
	3Wire	2Wire
1	Input ⊕	Input ⊕
2	Common ⊖	Output ⊕
3	Output ⊕	×
⊕	Earth	Earth

## Internal Circuit Diagram

### ▶ 2Wire mA Output Type



### ▶ 3, 4Wire mA, VDC Output Type



## Ordering Information

Model Name		PCL E 0100 R E I A		Option
Output				A : Normal
B : 4Wire 0~5V		G : 3Wire 4~20mA		Connecting Methods
C : 3Wire 0~5V		H : 2Wire 4~20mA		I : DIN 43650-A connector
D : 4Wire 1~5V		J : 3Wire 0~10V		Pressure port
E : 3Wire 1~5V		K : 4Wire 0~10V		E : R(PT)1/2"      Q : G(PF)1/2"
F : 4Wire 4~20mA				P : Union
Pressure Range				Pressure Unit
XXXX : Pressure				R : kPa      M : MPa
CXXX : Compound Pressure				B : bar      K : kgf/cm <sup>2</sup>
				P : psi      H : mmHg
				C : cmH <sub>2</sub> O

**Sensys** SENSOR SYSTEM TECHNOLOGY CO., LTD.

ADD : Rm.5010, Ansan Digital Park, 81, Neungan-ro,  
Danwon-gu, Ansan-si, Gyeonggi-do, Korea.  
TEL : 82-31-310-8910~9  
FAX : 82-31-310-8920  
http://www.sensys.co.kr  
e-mail : master@sensys.co.kr

· Specifications are subject to change without notice.