

## ■ APPLICATIONS

### • Beverage & Brewery

Liquor, Wine, Sparking Wine, Mash, Wort, Yeast, Beer, Syrup, Concentrate

### • Chemical

Acid, Alkaly, Waste, Water, Detergent

### • Dairy

Fresh milk, Whey, Cream, Skimmed milk

### • Food

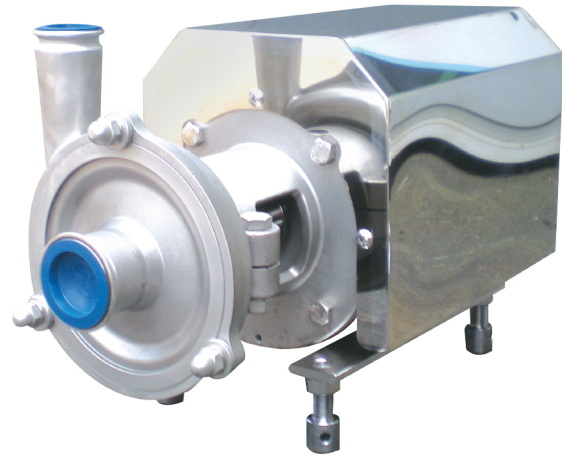
Animal & Vegetable Oil, Egg products, Fat, Vinegar, Sauce

### • Meat Processing

Brine, Meat, stock, Blood

### • Sugar / Confectionery

Liquid Sugar, Molasses, Starch solution, Glucoes

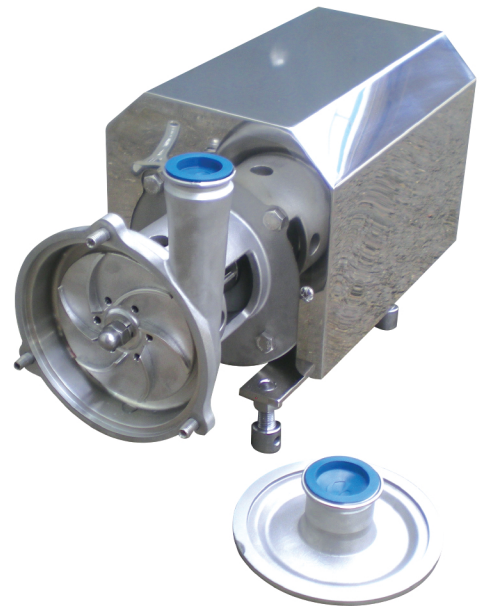


## ■ FEATURES

- Corrosion-resistant-material
- Easy Installation / maintenance
- Adjustable Pump-height
- Low Noise and Low Vibration
- Dynamically Balanced Impeller
- Clockwise from Driver-end
- Wetted Parts Material ( SUS316 / SUS316L )
- M/Seal : Single or Double ( TC/TC, Sic/Sic )

## ■ CONNECTIONS

- IDF Male, ISO Clamp, 3A, SMS, DIN and Flange

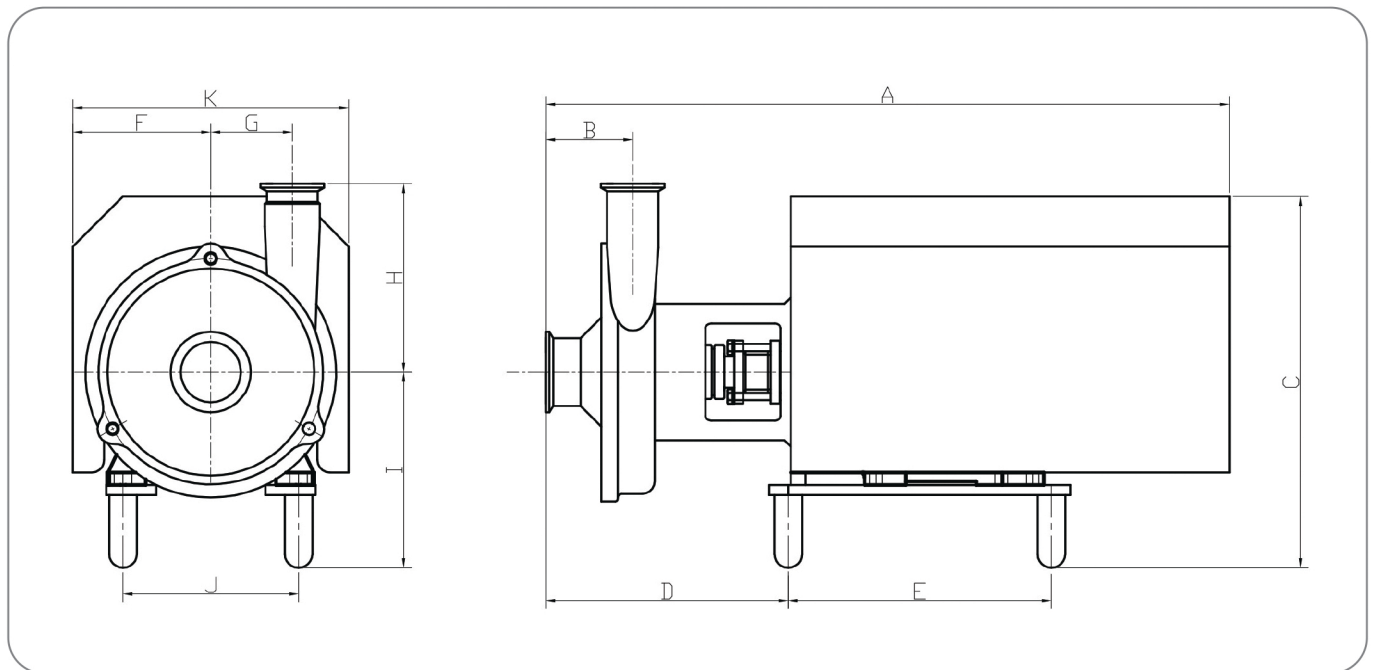


## ■ STANDARD SPECIFICATIONS

MODEL	CONNECTION		CAPACITY ( ℓ /min )	HEAD ( m )	POWER	M/SEAL
	In	Out			HP	Ø(mm)
SPC-005	1.5"	1.5"	50	12	0.5	25
SPC-01	1.5"	1.5"	100	15	1	
SPC-02	2.0"	1.5"	100	20	2	
SPC-03	2.0"	1.5"	170	25	3	28
SPC-05	2.0"	2.0"	200	30	5	
SPC-07	2.5"	2.0"	400	35	7.5	
SPC-10	2.5"	2.0"	500	40	10	

# SPC SERIES CENTRIFUGAL PUMP

## ■ PUMP DIMENSION



MODEL	A	B	C	D	E	F	G	H	I	J	K
SPC-005	446	70	280	165	210	90	65	150	150	112	180
SPC-01	476	70	289	175	210	110	65	150	159	125	220
SPC-02	506	70	296	174	250	110	65	150	156	140	220
SPC-03	542	70	296	208	250	110	80	150	156	140	220
SPC-05	582	70	331	179	280	135	80	150	178	190	270
SPC-07	663	75	380	200	320	160	90	170	202	216	320
SPC-10	698	75	420	200	320	160	90	170	202	216	320

**SEPA KOREA CORP.**

Agent

### Head Office & Factory

116-22, Juseok-ro, Namyang-eup, Hwaseong-si  
Gyeonggi-do, 18255, KOREA

Sanitary Div T) +82)70-8769-6301, F) +82)31-356-7685

Pump Div T) +82)70-8769-2823

M.Seal Div T) +82)70-8769-6300

<http://www.sepakorea.com>

