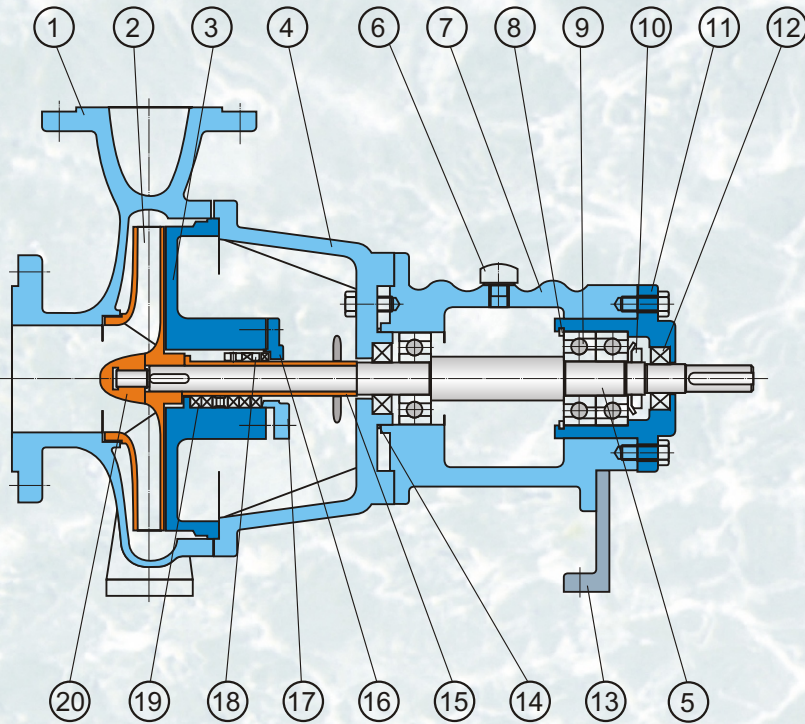
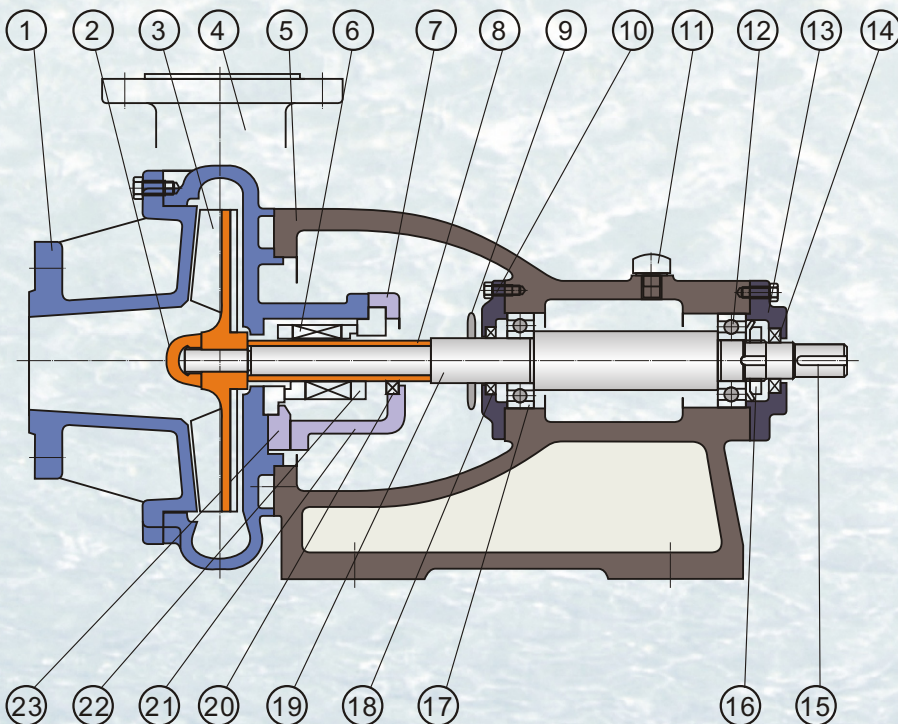


SF Sectional drawing (Standard)

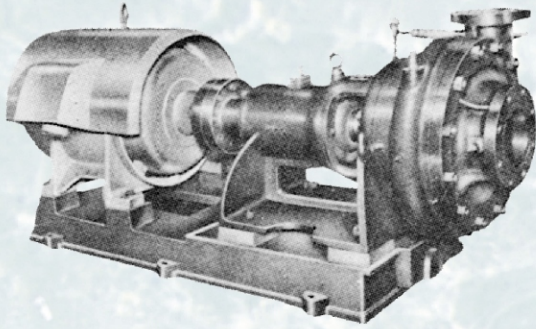


No	Part Name
1	Casing
2	Impeller
3	Casing Cover
4	Bracket
5	Shaft
6	Oil Cap
7	Bearing Housing
8	Snap Ring
9	Bearing
10	Lock Nut
11	Bearing Cover
12	Oil Seal
13	Support
14	O-Ring
15	Sleeve
16	Seal Cover
17	Packing Gland
18	Mechanical Seal
19	Gland Packing
20	Impeller Nut

S Sectional drawing (Standard)



No	Part Name
1	Casing Cover
2	Impeller Nut
3	Impeller
4	Casing
5	Bearing Housing
6	Mechanical Seal
7	Seal Cover
8	Sleeve
9	Deflector
10	Bearing Cover
11	Oil Cap
12	Bearing
13	Bearing Cover
14	Oil Seal
15	Key
16	Lock Nut
17	Bearing
18	Oil Seal
19	Shaft
20	Oil Seal
21	Seal Cover
22	Mechanical Seal
23	Seal Gland



General

- application ranges, design features and materials is same as SF series.
- difference between S and SF series:
 - S - bracket mounting
 - SF - foot mounting

60Hz

Model	Capacity	Head	Power	M/S	Weight (kg)					
	Q (m ³ /min)	H (m)	HP x P	∅ (mm)	Pump	Base	Motor			
25 S-L	0.08	10	1 x 4	25	40	25	15			
	0.15	22	2 x 2			25	24			
	0.15	40	5 x 2			27	39			
50 S-L	0.25	15	2 x 4		25	45	25	24		
	0.35	15	3 x 4				27	30		
	0.50	30	10 x 2				32	56		
50 S-M	0.25	25	5 x 4	35		60	28	39		
	0.40	20	5 x 4				28	39		
	0.40	55	15 x 2				34	109		
	0.50	70	20 x 2		36		109			
50 S-H	0.25	30	5 x 4		35	75	28	39		
	0.40	30	7.5 x 4				30	56		
	0.30	40	10 x 4				32	70		
80 S-M	0.75	15	5 x 4			35	75	28	39	
	0.75	20	7.5 x 4					30	56	
	0.75	55	20 x 2					36	109	
	0.75	70	25 x 2					38	136	
80 S-H	0.7	30	10 x 4				35	85	32	70
	1.0	30	15 x 4	34					109	
	1.0	40	20 x 4	36					136	
100 S-L	1.3	15	7.5 x 4	35				80	30	56
	1.7	15	10 x 4						32	70
100 S-M	1.0	25	10 x 4		90			34	70	
	2.0	20	15 x 4					36	109	
150 S-M	3.5	15	20 x 4		45			140	40	136
	4.2	15	25 x 4			45			161	
150 S-H	3.5	22	30 x 4			170		50	161	
	4.0	25	40 x 4					55	182	