

# Micro Water Flow Sensor

(SMWF-0420 H29C)

## PRODUCT SPECIFICATION SHEET



### FEATURES

- This sensor has excellent character in low pressure.
- The out pulse frequency has linear character in flux change.
- This sensor has a half-permanent life by high sensitivity semiconductor sensor.

### CONTENTS

Application .....	1
Features .....	1
Specifications .....	1~2
Dimensions .....	2

### APPLICATION

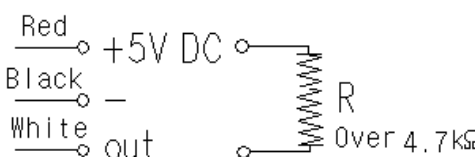
This sensor is used in water flow sensing.

This sensor has application to gas boiler and instantaneous warm-water appliance, and water filtering appliance.

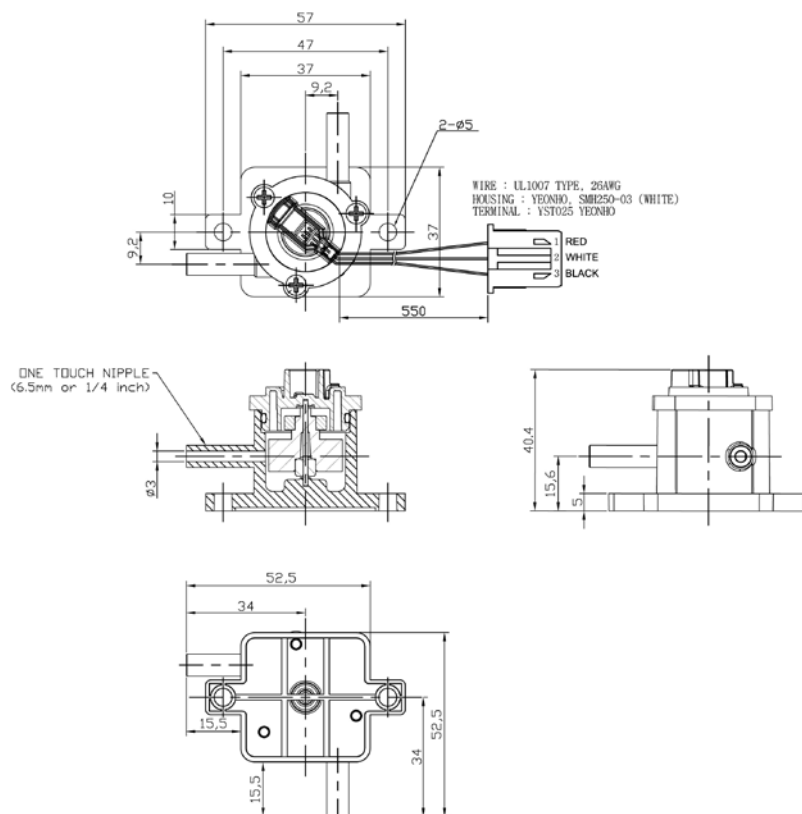
### SPECIFICATIONS

Type	: Magnet sensor	
Installation	: Vertical with upward flow	
Ambient temperature	: 0 ~ 60℃	
Permissible fluid temperature	: 0 ~ 60℃ (It shall not be frozen)	
Material	: Body	PC
	: Rotor	POM
	: Magnet	Ba – Ferrite
	: Stop ring	SUS304

# SPECIFICATIONS

Efficiency	Fluid	: Water		
	Measuring range	: 0.5 ~2.0 ( ℓ / min)		
<div>Flow rate – pulse (Hz)</div> <div></div>		Flow rate Q ( ℓ /min)	Pulse signal (Hz)	
		0.5	22	Accuracy F.S ± 5%
		1.0	47	
		1.5	72	
		2.0	97	
Out formula (Hz)		: Hz = 46.8 X LPM		
Working pressure		: 10 kg/cm <sup>2</sup> (Withstand pressure : 17.5kgf/cm <sup>2</sup> - 1min)		
Electrical rating		: DC 4.5V ~ 24V, 10 mA, Max. (Option : 2.7V ~24V , 5mA)		
Duty cycle		: 30 ~ 70%		
Insulation resistance		: Not less than 100 MΩ (Between the connector and body)		
Dielectric strength		: When AC 600V(50/60 Hz) is added between the connector and body, detecting current is under 3 mA.		
Pipe Connection		: ONE TOUCH NIPPLE(6.5mm or 1/4 inch)		
Weight		: 31g		

# DIMENSIONS



The specifications and dimensions can be changed without warning

## APPLICATION CIRCUIT

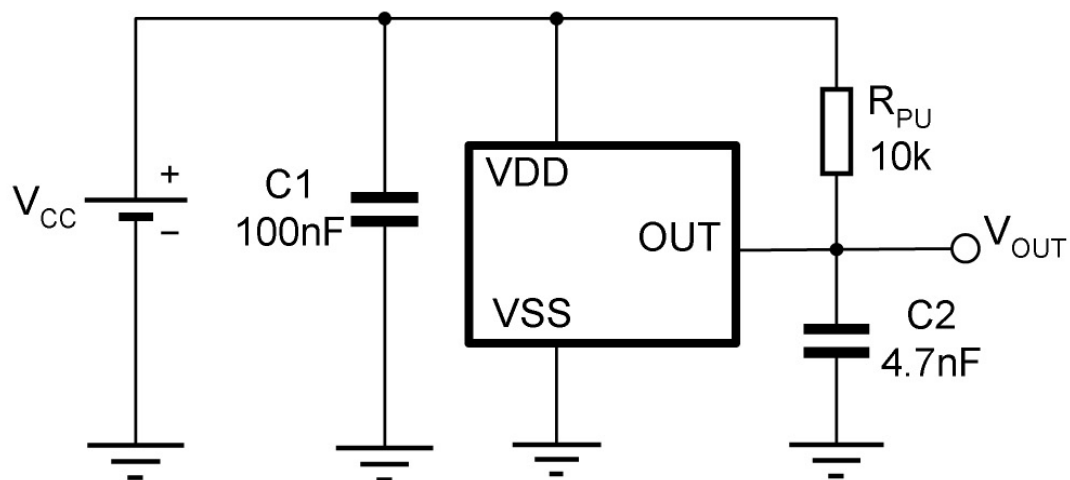
This product includes semiconductor IC.

So this have to be protected from noises of outside circuit.

Please refer to a circuit as below.

(This circuit for protecting from noise was supported by the supplier of semiconductor)

### ***Typical Three-Wire Application Circuit***



### ***Automotive and Harsh, Noisy Environments Three-Wire Circuit***

