

Micro Water Flow Sensor

(SMWF - 8)

PRODUCT SPECIFICATION SHEET



FEATURES

- This sensor has excellent character in low pressure.
- The out pulse frequency has linear character in flux change.
- This sensor has a half-permanent life by high sensitivity semiconductor sensor.

CONTENTS

Application	1
Features	1
Specifications	1~2
Dimensions	2

APPLICATION

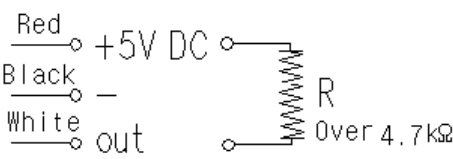
This sensor is used in water flow sensing.

This sensor has application to water ionizer, water purifier, ice maker, coffee machine and refrigerator appliance.

SPECIFICATIONS

Type	: Hall sensor	
Installation	: Both direction	
Ambient temperature	: 0 ~ 60℃	
Permissible fluid temperature	: 0 ~ 60℃ (It shall not be frozen)	
Material	: Body	POM
	: Rotor	POM
	: Magnet	Ba – Ferrite
	: Stop ring	SUS304

SPECIFICATIONS

Efficiency	Fluid	: Water		
	Measuring range	: 0.4 ~ 5.0 ℓ / min		
<div>Flow rate – pulse</div> <div></div>		Flow rate Q (ℓ/min)	Pulse signal (Hz)	
		0.5	8	Accuracy F.S ± 5%
		1.0	19	
		5.0	107	
		10.0	217	
Working pressure (Max)		: 10 kg/cm ²		
Electrical rating		: DC 4.5V ~ 24V, 10 mA, Max.		
Duty cycle		: 30 ~ 70%		
Insulation resistance		: Not less than 100 MΩ (Between the connector and body)		
Dielectric strength		: When AC 600V(50/60 Hz) is added between the connector and body, detecting current is under 3 mA.		
Pipe Connection		: Refer to DIMENSIONS		
Weight		: 42.6g		

DIMENSIONS

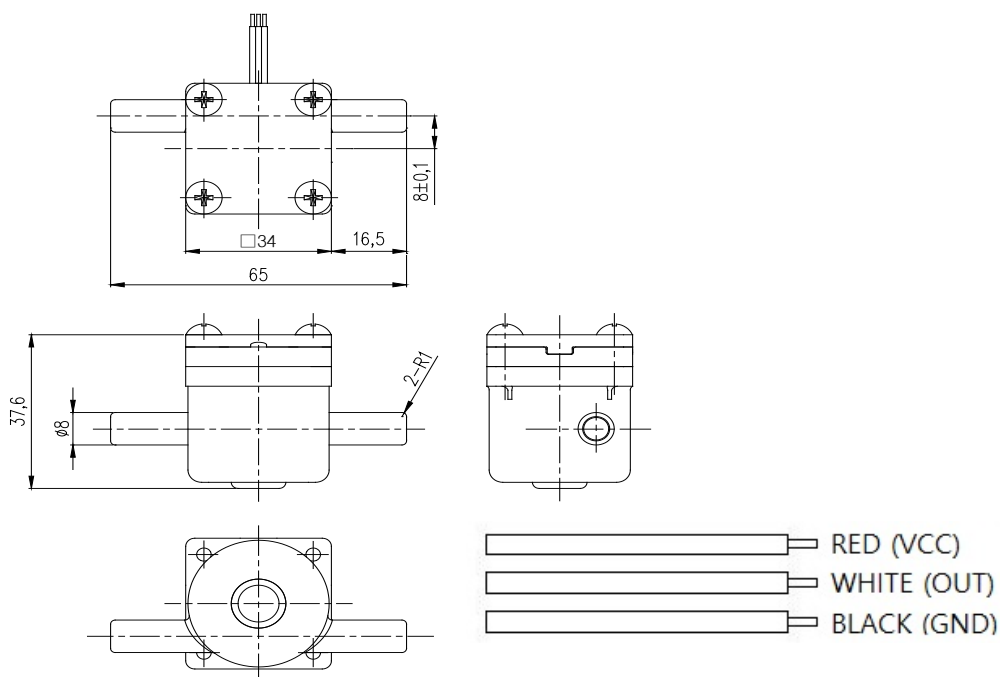


Fig 1. Micro water flow sensor

The specifications and dimensions can be changed without warning