

Water Flow Sensor

(SWF 15A)(SWF 20A)

PRODUCT SPECIFICATION SHEET



FEATURES

- This sensor has excellent character in low pressure.
- The out pulse frequency has linear character in flux change.
- This sensor has a half-permanent life by high sensitivity semiconductor sensor.

CONTENTS

Application	1
Features	1
Specifications	1~2
Dimensions	2

APPLICATION

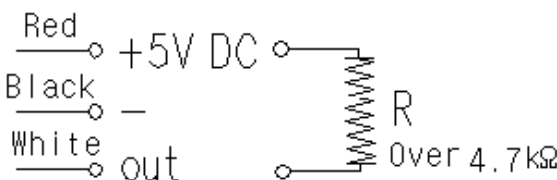
This sensor is used in water flow sensing.

This sensor has application to gas boiler and instantaneous warm-water appliance, and water filtering appliance.

SPECIFICATIONS

Type	: Hall sensor	
Installation	: Vertical / horizontal	
Working pressure (Max)	: 10.0 kgf/cm ²	
Permissible pressure (Max)	: 17.5 kgf/cm ²	
Material	: Body	NY66(G/F 30%)
	: Rotor	POM
	: Magnet	Ba – Ferrite
	: Stop ring	SUS304

SPECIFICATIONS

Efficiency	Fluid	: Water	
	Measuring range	: 2.0 ~ 24 ℓ / min	
Flow rate - pulse 		Flow rate Q (ℓ /min)	Pulse signal (Hz)
		2.0	14.0 ± 10%
		6.0	42.0 ± 8%
		12.0	84.0 ± 8%
		24.0	168.0 ± 8%
Permissible fluid temperature		: 0 ~ 60 ℃ (It shall not be frozen)	
Electrical rating		: DC 4.5V ~ 24V, 10 mA, Max.	
Duty cycle		: 30 ~ 70%	
Insulation resistance		: Not less than 100 MΩ (Between the connector and body)	
Dielectric strength		: When AC 600V(50/60 Hz) is added between the connector and body, detecting current is under 3 mA.	
Pipe Connection		: PF 1/2"(15A) or PF 3/4"(20A)	

DIMENSIONS

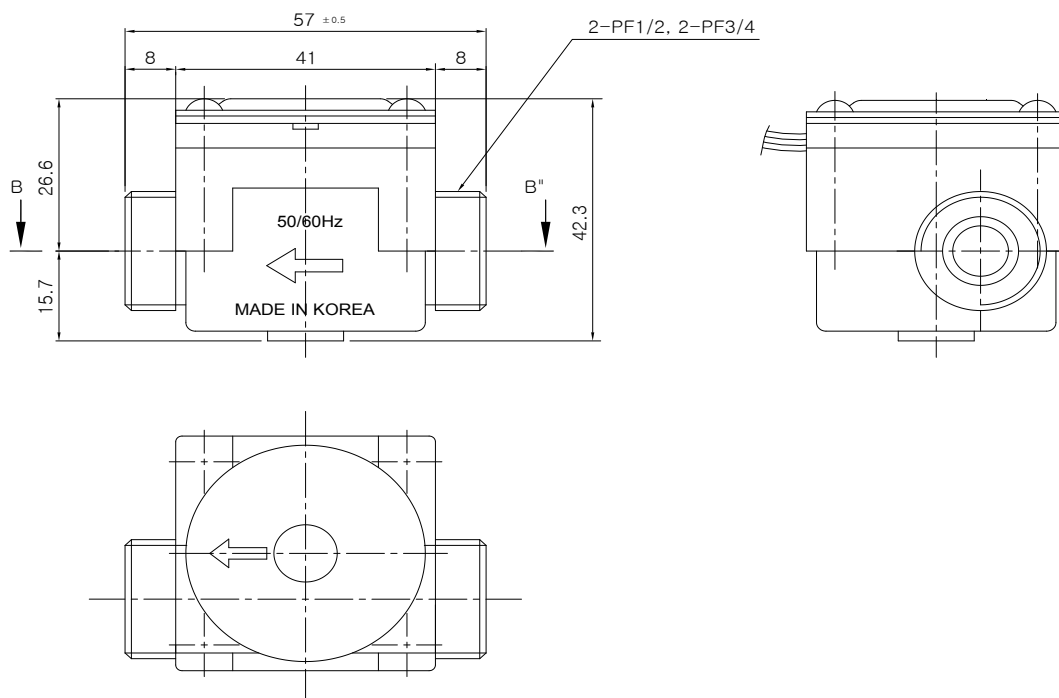


Fig 1. Water flow sensor

The specifications and dimensions can be changed without warning