

# Flow Switch

(SFS 57, SFS 93)

## PRODUCT SPECIFICATION SHEET



## FEATURES

- This switch has excellent character in low pressure.
- This switch cannot exert harmful influence by scrap.

## CONTENTS

Application .....	1
Features .....	1
Specifications .....	1~2
Dimensions .....	2~3

## APPLICATION

This switch is used in water flow sensing.

This switch has application to gas boiler and instantaneous warm water appliance, and water filtering appliance.

## SPECIFICATIONS

Operating flow quantity( ℓ /min) (According to any situations, it is possible to change a little bit)	: ON	2.5 ± 0.5
	: OFF	2.0 ± 0.5
Installation	: Vertical and Horizontal	
Ambient temperature (According to any situations, it is possible to change a little bit)	: 0 ~ 60℃	
Permissible fluid temperature (According to any situations, it is possible to change a little bit)	: 0 ~ 60℃(It shall not be frozen)	
Material	: Body	NY66(G/F 30%)
	: Magnet	Sr – Fe
	: O-ring	Silicone
	: MG Plate	SUS316

## SPECIFICATIONS

Common use pressure		: 0.2 ~ 10 kgf/cm <sup>2</sup>
Electrical rating	: Switching voltage	: DC100V, AC150V
	Switching current	: AC, DC 1.0A
	Ratings	: 10VA(W)
	Contact resistance	: less than 100 mΩ (only resistance load)
Withstand pressure		: When water pressure = 17.5 kgf/cm <sup>2</sup> is added for one minute, no external leakage shall be measured and it must be no damaged on the body.
Dielectric strength		: When AC1800V(50/60Hz) is added between the connector and body for one second, it shall be no unusual, detecting current is under 3mA.
Insulation resistance		: Between terminal and outer exposed metal parts shall be 100 MΩ ever by DC 500V meggar.

## DIMENSIONS

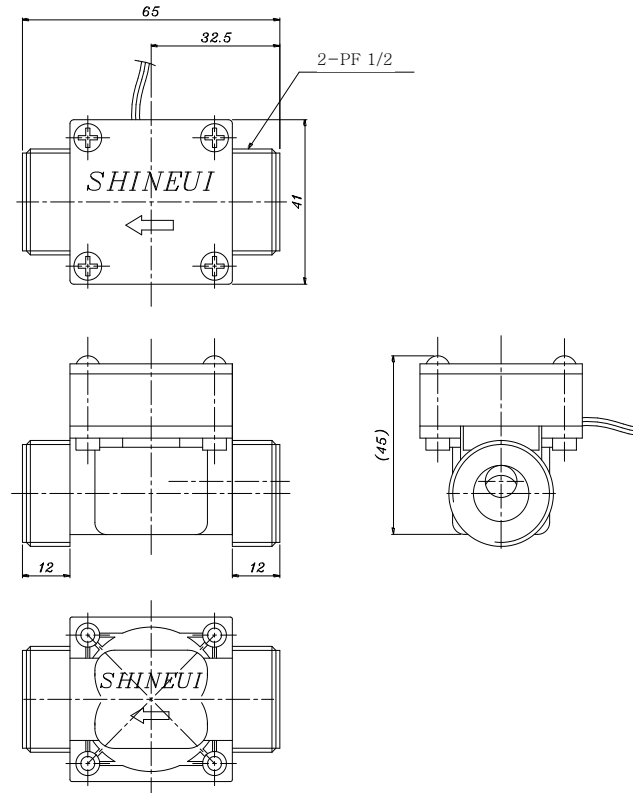


Fig 1. Flow switch

The specifications and dimensions can be changed without warning

## DIMENSIONS

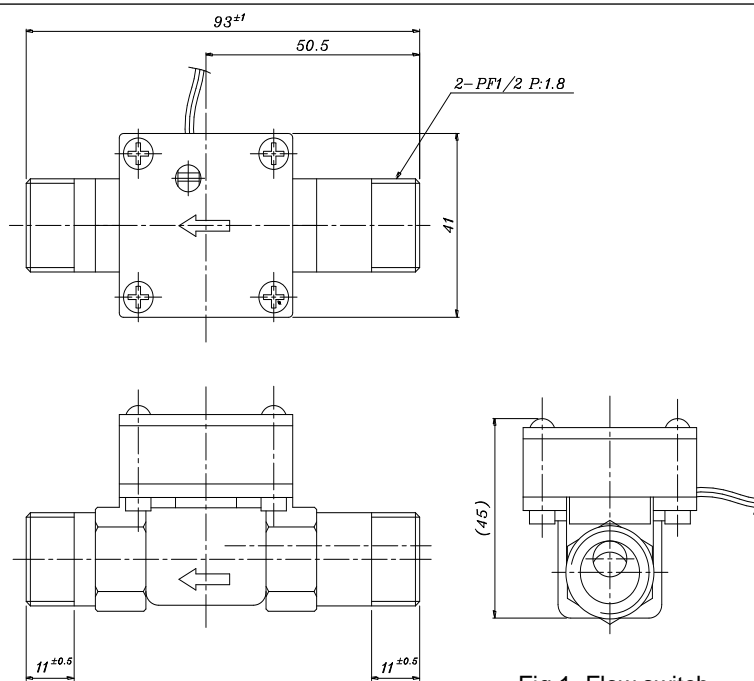


Fig 1. Flow switch

The specifications and dimensions can be changed without warning