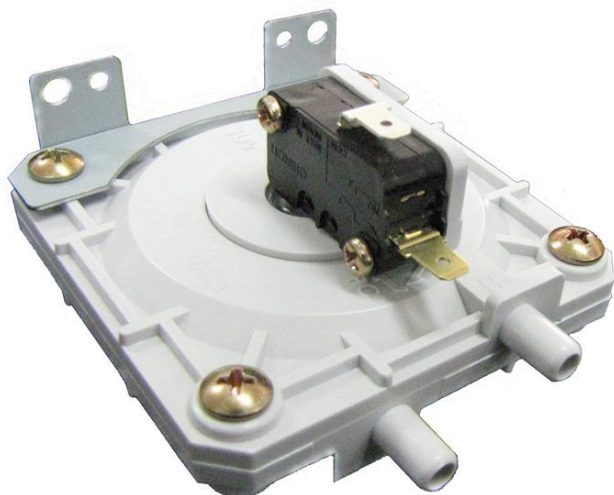


# Air Pressure Switch(Fix) (SAPS 70F)

CE approved : EN1854  
EN60730

## PRODUCT SPECIFICATION SHEET



## FEATURES

- This switch operates by a positive pressure and negative pressure, a differential pressure.
- This switch is operated to low pressure of 0 to 30 mmH<sub>2</sub>O and a user is able to request necessary pressure point.

## CONTENTS

Application .....	1
Features .....	1
Specifications .....	1~2
Dimensions .....	2

## APPLICATION

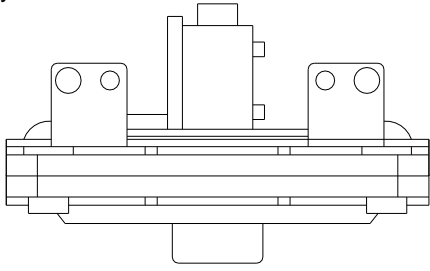
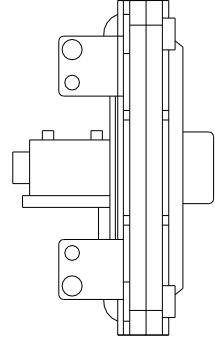
This switch is used in air pressure sensing.

This switch has application to sensing of exhaust gas in oil, gas boiler and fan heater.

## SPECIFICATIONS

Type	: Differential pressure type	
Installation (Standard)	: Vertical or Horizontal (Standard : Vertical)	
Control fluid	: Air	
Electrical ratings	: 0.1A 125VAC, 0.1A 30VDC (Dry Circuit)	
Allowable temperature	: -20 ~ 60℃	
Pressure range for set-up point (ON point)	: 4 ~ 30 mmH <sub>2</sub> O (It can changed by customers)	
Material	Body	PC (G/F 30%)
	Diaphragm	Silicone
	Bellows	Silicone
	Spring	SUS304

## SPECIFICATIONS

Allowable Pressure		: 100 mmH <sub>2</sub> O
Difference between ON and OFF ( Δ P)		: 3.0 mmH <sub>2</sub> O
Leak tightness		: 120 cm <sup>3</sup> /h (Pressure condition 100mmH <sub>2</sub> O)
Switching tolerance		: ± 1.0 mmH <sub>2</sub> O (It can be changed by customer)
Shock		: 5G
Constant resistance		: Initial, 150 mΩ.
Insulation resistance		: 100 MΩ, Min. DC500V Megger
Dielectric strength	Terminal – Terminal	: 800 VAC/1 min
	Terminal – Earth	: 1500 VAC/1 min
Mechanical life cycle		: 200,000 Cycle
Electrical life cycle		: 100,000 Cycle
Humidity		: RH 0~80%
Air connection		: Silicone Φ 4 X Φ 7, Φ 5X Φ 8
Installation screw		: M4
Electrical connection		: Male fast on 4.8X0.5mm
Installation Instructions		horizontality  when installed horizontally, the pressure switch switches at a pressure lower
		verticality 

## DIMENSIONS

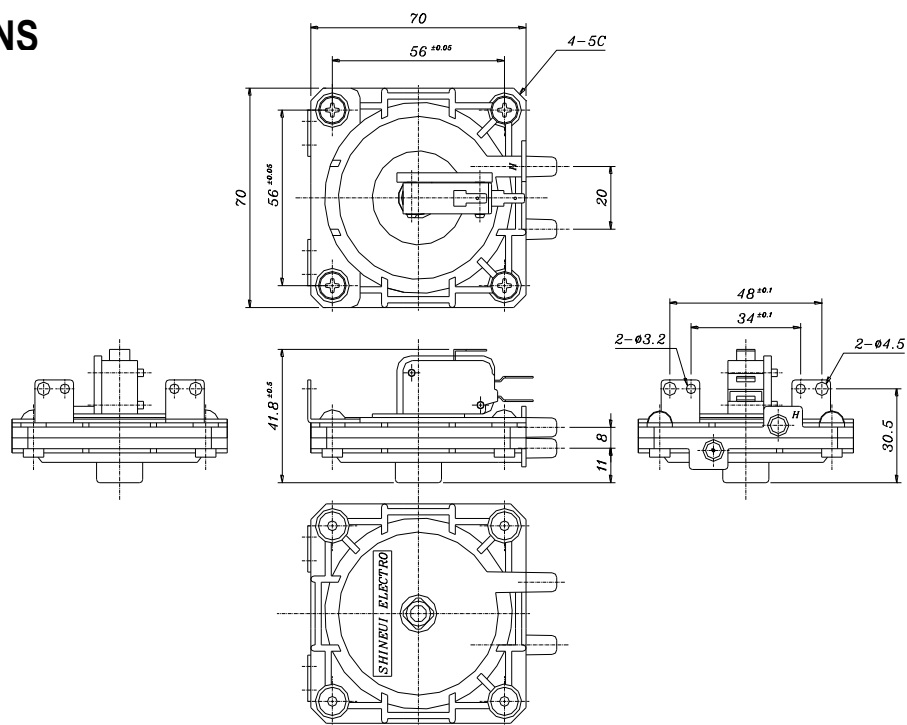


Fig 1. Air pressure switch(F)

**The specifications and dimensions can be changed without warning**