

# 3 Way Valve

(STV 300-14)

## PRODUCT SPECIFICATION SHEET



## FEATURES

- This valve excel in closing of flow path
- This valve is superior to endurance than other valve.
- This valve has various structures.

## CONTENTS

Application .....	1
Features .....	1
Specifications .....	1~2
Dimensions .....	3

## APPLICATION

This valve is used in changing of 2 way flow path.

This valve has application to gas boiler, all industrial fields, etc.

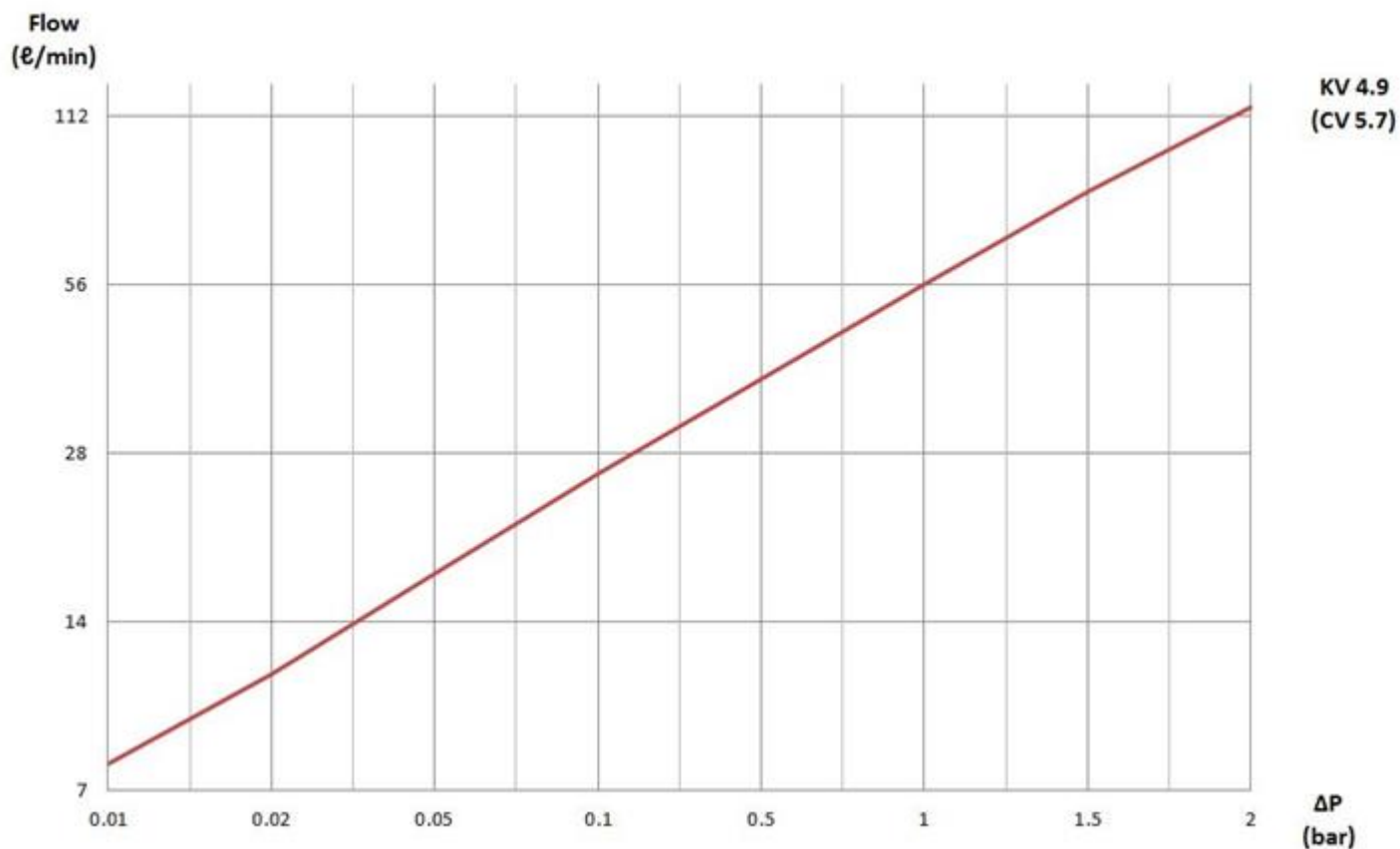
## SPECIFICATIONS

Type	: Motorized Three Way Valve	
Installation	: Vertical and Horizontal	
Fluid	: Water	
Ambient temperature	: 0 ~ 60℃	
Permissible fluid temperature	: 0 ~ 90℃ (It shall not be frozen)	
Material	: Body	NY66(G/F 30%)
	: Ball	EPDM
	: O-ring	Silicon
	: Shaft	BRASS

## SPECIFICATIONS

Common use pressure		: 0.2 ~ 3 kgf/cm <sup>2</sup>
Electrical rating	: Power supply	: 220 / 240 VAC, 50 / 60 Hz
	Power consumption	: less than 2.5 / 3W
	Working time	: 10sec
	Current	: less than 20mA
Withstand pressure		: When water pressure = 3.5 kgf/cm <sup>2</sup> is added for one minute, no external leakage shall be measured and it must be no damaged on the body.
Dielectric strength		: When AC1800V(50/60Hz) is added between the connector and body for one second, it shall be no unusual, detecting current is under 3mA.
Connection port		: 3/4" (20A)

## PRESSURE DROP GRAPH



## DIMENSIONS

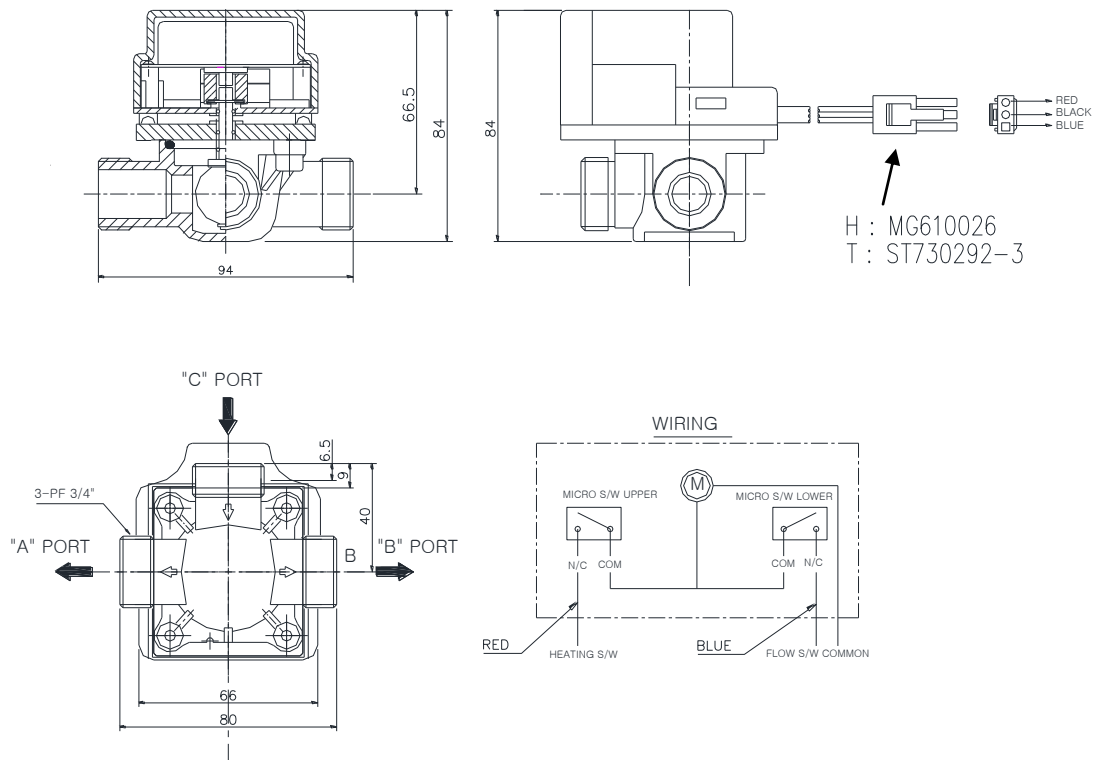


Fig 1. 3 Way valve

The specifications and dimensions can be changed without warning