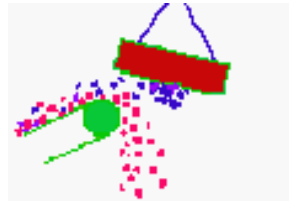


Suspended Magnetic Separator

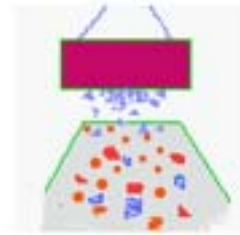
SIMCO

<http://www.simco.co.kr> simco@simco.co.kr

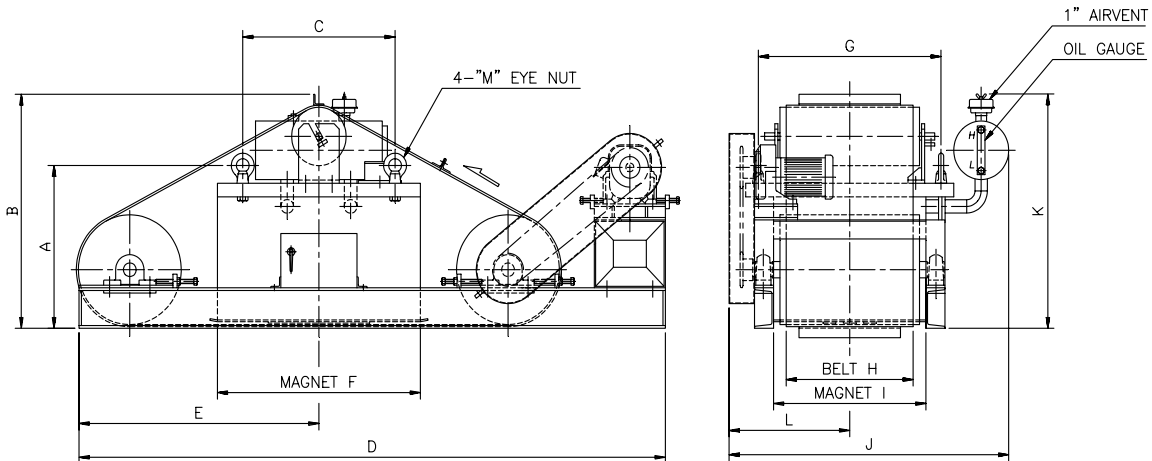
FILE CAT-SBS1



In-line Manual



Cross-belt Manual



TYPE SBS DIMENSION DATA (UNIT : mm)

| TYPE | A | B | C | D | E | F | G | H | I | J | K | L | M | MTR | DC KW | WT(Kg) |
|------|------|-----|------|------|------|------|------|-----|------|------|------|-----|-----|------|-------|--------|
| 35 | 676 | 460 | 400 | 1900 | 710 | 500 | 420 | 300 | 350 | 750 | 710 | 325 | M20 | 0.75 | 1.0KW | 780 |
| 45 | 726 | 510 | 400 | 1900 | 710 | 500 | 520 | 400 | 450 | 850 | 760 | 375 | M20 | 0.75 | 1.5KW | 900 |
| 60 | 860 | 596 | 600 | 2150 | 885 | 800 | 720 | 500 | 600 | 1102 | 860 | 475 | M24 | 0.75 | 2.0KW | 1230 |
| 80 | 882 | 596 | 850 | 2350 | 985 | 1000 | 920 | 700 | 800 | 1302 | 970 | 575 | M24 | 1.5 | 2.7KW | 1750 |
| 100 | 1083 | 725 | 1000 | 2800 | 1150 | 1150 | 1120 | 800 | 1000 | 1553 | 1120 | 675 | M30 | 2.2 | 4.2KW | 2800 |

Magnetic Separator Application Data for Order ;

1. Width of Conveyor
2. Speed of Conveyor
3. Degree of troughing angle
4. Degree Incline of Conveyor
5. Diameter of Head pulley
6. Capacity
7. Product on Conveyor
8. General Shape of tramp iron
9. Equipment to be protected
10. Mounting position
11. Utility

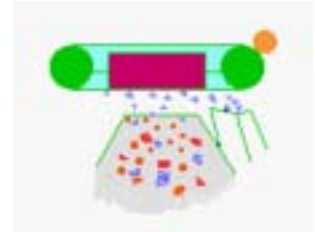
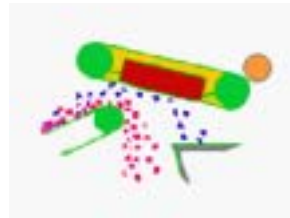
In-line Auto / Cross-belt Auto - Suspended Magnetic Separator

* Protection of Machinery * Purification of Products. * Reclamation of Ferrous.

Suspended Magnetic Separator

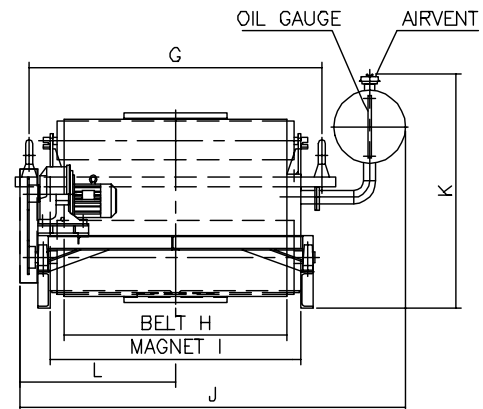
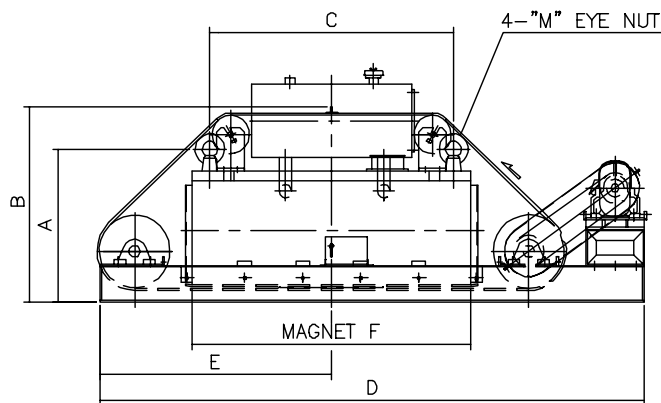
SIMCO

http://www.simco.co.kr simco@simco.co.kr



In-line Auto

Cross-belt Auto



TYPE SBS DIMENSION DATA (UNIT : mm)

| TYPE | A | B | C | D | E | F | G | H | I | J | K | L | M | MTR | DC KW | WT(Kg) |
|------|------|------|------|------|------|------|------|------|------|------|------|------|-----|-----|-------|--------|
| 120 | 834 | 1107 | 1100 | 3000 | 1270 | 1280 | 1400 | 1000 | 1200 | 1920 | 1180 | 810 | M42 | 2.2 | 5.5KW | 4800 |
| 140 | 930 | 1185 | 1350 | 3250 | 1370 | 1500 | 1500 | 1200 | 1400 | 2050 | 1285 | 890 | M42 | 3.7 | 7.2KW | 6650 |
| 160 | 925 | 1250 | 1550 | 3920 | 1670 | 1750 | 1800 | 1400 | 1600 | 2430 | 1400 | 1020 | M48 | 3.7 | 10KW | 9000 |
| 180 | 1040 | 1375 | 1750 | 4120 | 1770 | 1950 | 2000 | 1600 | 1800 | 2650 | 1500 | 1140 | M64 | 5.5 | 12KW | 11500 |
| 210 | 1080 | 1415 | 2100 | 4470 | 1945 | 2300 | 2300 | 1900 | 2100 | 2950 | 1540 | 1290 | M64 | 5.5 | 17KW | 17000 |

Magnetic Separator Application Data for Order ;

- | | | |
|-------------------------------|--------------------------------|------------------------------|
| 1. Width of Conveyor | 2. Speed of Conveyor | 3. Degree of troughing angle |
| 4. Degree Incline of Conveyor | 5. Diameter of Head pulley | 6. Capacity |
| 7. Product on Conveyor | 8. General Shape of tramp iron | 9. Equipment to be protected |
| 10. Mounting position | 11. Utility | |

In-line Auto / Cross-belt Auto - Suspended Magnetic Separator

* Protection of Machinery * Purification of Products. * Reclamation of Ferrous.