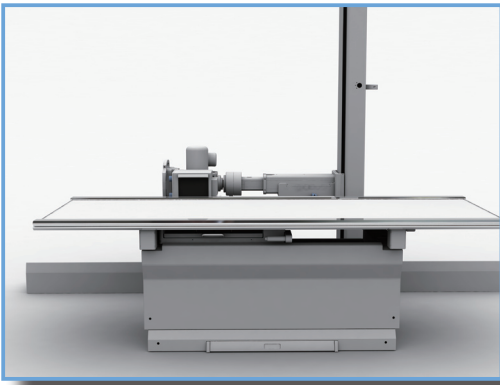


DigiRAD Floor Mounted System

Sitec radiography system "DigiRAD" delivers the ease-of-use, image quality and throughput. The system is designed to fully meet the demands on quality and versatility at an affordable price. The compact, space-saving high-frequency generator and tube support provide greater working space and flexible layout.



Floor Mounted Tube Stand

The smooth longitudinal and transverse travel allows the technologist to fully concentrate on the patient during examination.

- 119 in. (3020mm). long tracks with 101 in. (2570mm) of longitudinal travel
- Multi-function with fingertip controls for all motions
- All-Locks release switch

Specifications	
Vertical Travel	57.5 in. (1460 mm), minimum floor to focus distance of 13.6 in. (350 mm)
Column Rotation	+/- 180°
Transverse Arm	9.4 in. (240 mm)
Tube angulations	+/- 135° with detents at 0° and +/- 90°

VERTICAL BUCKY STAND (SD-1500)

Sitec's vertical bucky stand allows for a wide range of imaging studies from extremities to skull work.

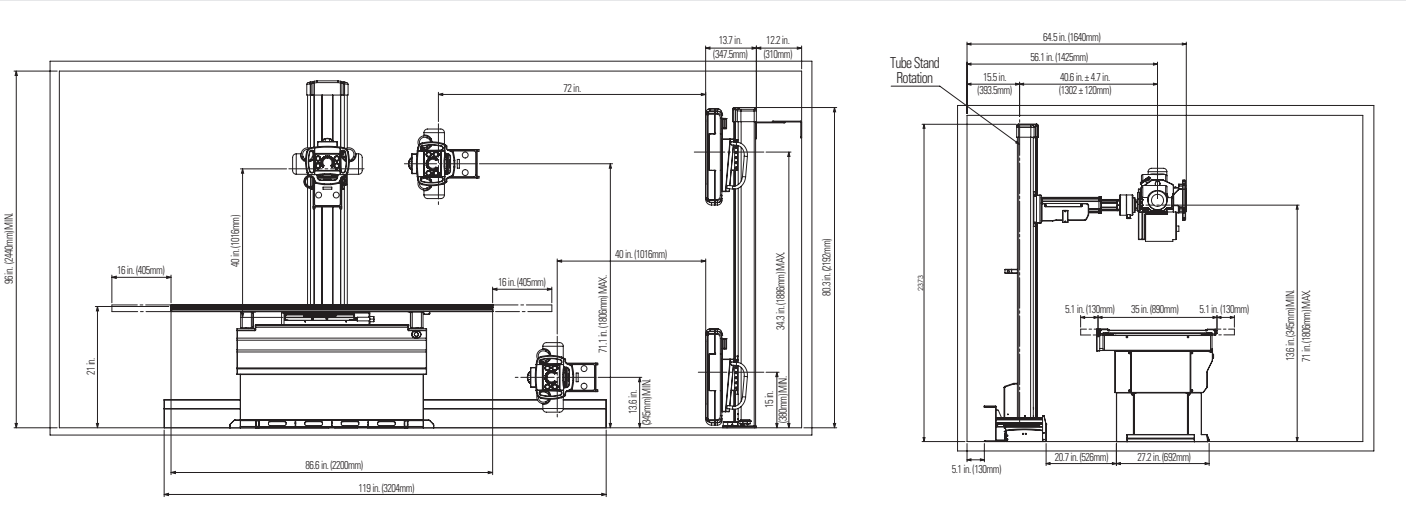
Specifications	
Movement	Manual vertical travel with foot pedal Option: Motorized vertical movement with autotracking
Height stroke	14.9 ~ 74.2 in. (380~1886 mm)

4-Way table

Specifications	
Patient weight capacity	650 lb. (295 kg)
Tabletop Length	86 in. (2200mm) with 31.8 in. (810mm) of longitudinal travel
Tabletop Width	35 in. (890mm) with 10 in. (260mm) of transverse travel
Foot switch controls for all table movements	

High Frequency Generators available in these power ratings:
40kW - 50kW - 65kW and 80kW power ratings
125kVp or 150kVp
Manual or Anatomical technique selection
Membrane or touch screen operator console
Automatic exposure control option

System dimensions



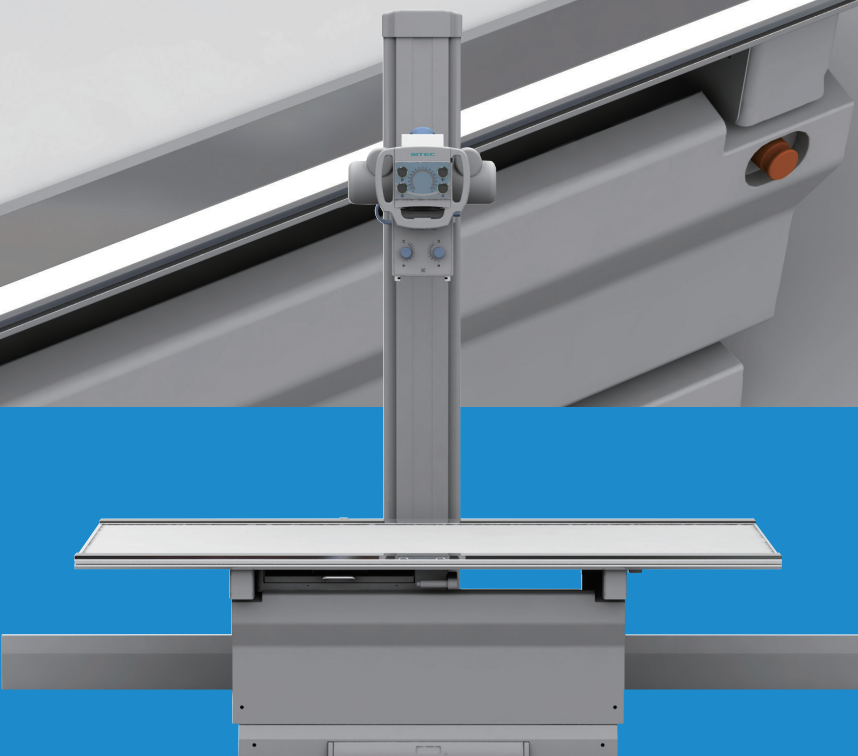
SITEC
Sitec Medical Co., Ltd.

662-165 Pungmu-dong, Gimpo-si, Gyeonggi-do, Korea
Tel_82-31-982-0620 Fax_82-31-982-0627
www.sitec-med.com



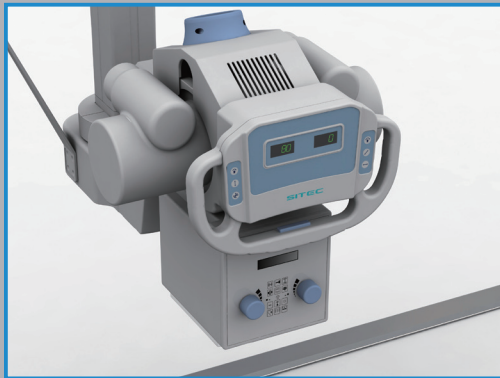
DIGIRAD
Radiographic Systems

SITEC
Sitec Medical Co., Ltd.



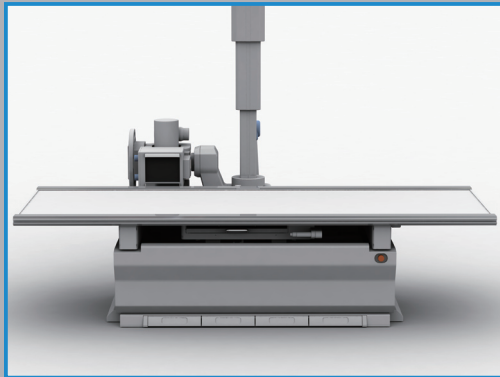
DIGIRAD

Sitec’s Medical Imaging “DigiRAD” Radiographic Systems provide Outstanding Value, Clear and Reliable solutions for all applications.



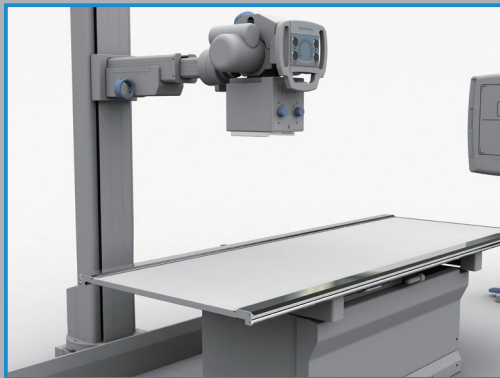
Sitec Smart Design

DigiRAD, the innovative radiography system, provides reliability through smart design to meet the operator’s satisfaction. DigiRAD offers a full line of state of the art of x-ray systems. Our systems consist of Ceiling or Floor Mounted system, elevating four way top tables and the powerful High Frequency generators from 40kw and up to 80kW.



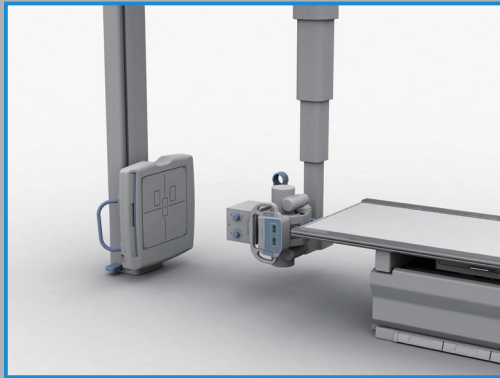
DigiRAD Ceiling Mounted System

Designed for high-throughput performance and easy workflow, it accommodates full positioning functionality to achieve maximum flexibility for imaging centers, orthopedic facilities as well as hospital emergency rooms. Tube positioning can be performed easily and quickly with our fine-tuned weight balance mechanism.



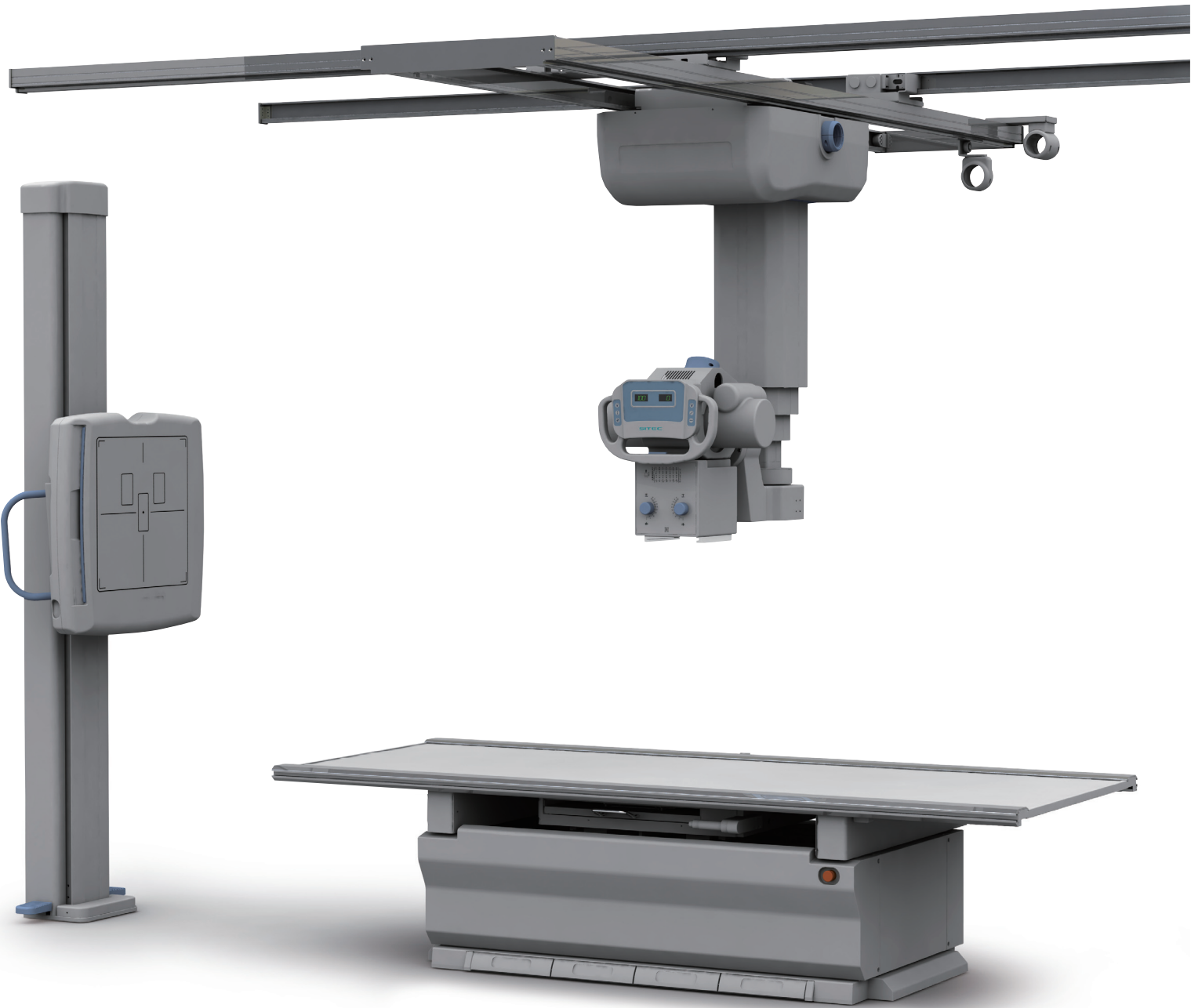
DigiRAD Floor Mounted System

Sitec’s Floor Mounted system is designed to offer all types of exams to clinics which have high volumes of patient. Its compact and clever design delivers high-performance as well as cost-effective operation .



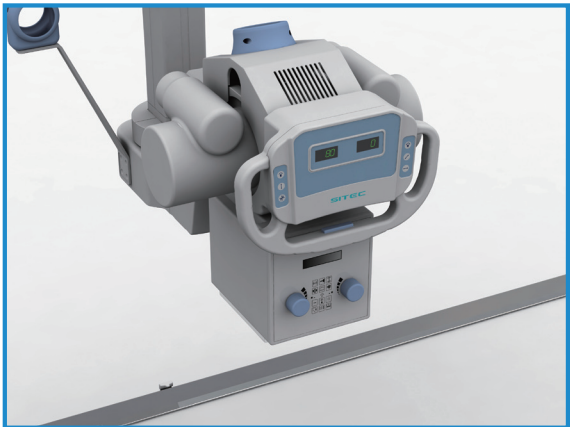
Sitec Smart Performance

Sitec’s DigiRAD systems are completed with user-friendly and easy-to-learn vertical movement. The different system configurations are flexible to meet various room sizes and budgets.



DigiRAD Ceiling Mounted System

Our smart design with its 660 Lbs Patient weight capacity, the highest rating in the industry, and the smoothest of tube support movements are only two of the unique and unmatched advantages of our “DigiRAD” system.



OVERHEAD TUBE CRANE (SC-2000)

It is designed for “back to basics operation” minimizing unnecessary optional items while maximizing efficiency and reliability.

Specifications	
Movement	Manual for X, Y, and Z axis
	Option: Motorized vertical movement with autotracking
Travel range	Longitudinal : 136.1 in. (3458 mm)
	Transverse : 88.9 in. (2260 mm)
	Vertical : 59 in. (1500 mm)

VERTICAL BUCKY STAND (SD-1500)

Sitec’s vertical bucky stand allows for a wide range of imaging studies from extremities to skull work.

Specifications	
Movement	Manual vertical travel with foot pedal
	Option: Motorized vertical movement with autotracking
Height stroke	14.9 ~ 74.2 in. (380~1886 mm)

“SILENT LIFT” - ELEVATING, FLOAT-TOP TABLE (ST-3300)

Our 4-Way and 6-Way floating table tops with “Silent Lift” elevating technology accommodate extreme patients sizes up to 660 Lbs rating. The wide 35 in.(890mm) table also provides comfort for larger patients.

Specifications	
Stroke	Longitudinal ± 16.1 in. (±410 mm)
	Transverse ± 4.9 in. (±125 mm)
	Height ± 20.8~32.6 in. (530~830 mm)
Patient weight	660 lb. (300 kg)

High Frequency Generators available in these power ratings:

40kW - 50kW - 65kW and 80kW power ratings

125kVp or 150kVp

Manual or Anatomical technique selection

Membrane or touch screen operator console

Automatic exposure control option

System dimensions

