

Standard Power Steering Unit



Feature

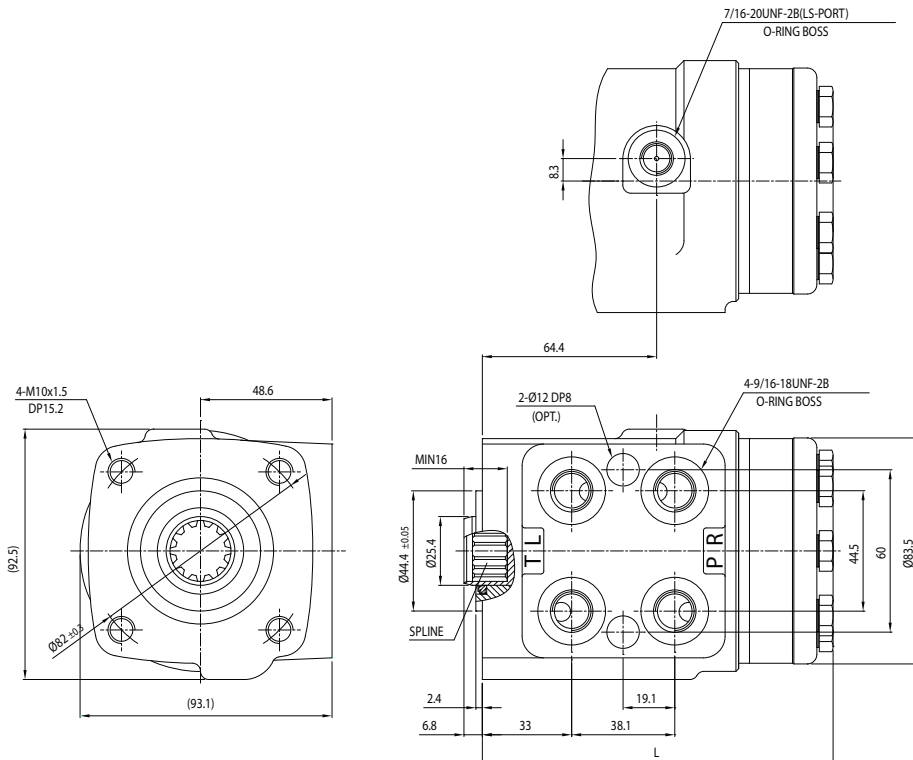
- Typical application : mid sized forklift truck, large farm tractors
- Attachable valve blocks : priority valve, flow divider, flow control valve, etc.
- Special functions according to customer's request are available: high system pressure, high back pressure, low slip gerotor, low input torque, etc.

Specifications

- Max. System Pressure: 175 kgf/cm²(17.2 MPa)
- Rated Flow: 23 l/min, 45 l/min
- Max. Back Pressure: 20 kgf/cm²(2.0 MPa)
- Steering Input Torque: 0.2 kgf.m
- Max. System Operation Temperature: 95 °C
- Recommended Filtration: nominal 10 μm
- System: Open center(non load reaction or load reaction) Load sensing(static or dynamic signal)Closed center

Dimensions

Displacement(cm ³ /rev)	Length L(mm)	Displacement(cm ³ /rev)	Length L(mm)
40	122.3	200	139.8
51	120.7	240	146.3
62	122.3	277	151.9
69	123.2	315	155.6
80	124.7	369	163.7
100	127.5	461	176.0
120	130.1	553	188.4
160	136.2	630	211.3



Code and specification

N051-EP3M1A

N	051	E	P3	M1	A
---	-----	---	----	----	---

① System Symbol

- N : Open Center, Non Load Reaction, 23 l/min
- Y : Open Center, Non Load Reaction, 45 l/min
- L : Open Center, Load Reaction
- D : Load Sensing, Dynamic Signal
- S : Load Sensing, Static Signal
- C : Closed Center

② Displacement

040~630 : 40 ~630 cm³/rev

③ Inlet Check Valve

- E : With Inlet Check Valve
- X : Without Inlet Check Valve

④ Port Sizes

- P3 : PF 3/8 O-ring port
- U1 : 9/16-18 UNF O-ring port
- U3 : 3/4-16 UNF O-ring port
- B1 : With in-build Block Valves
- * LS-Port Size of LS-system : 7/16-20 UNF O-ring port

⑤ Mounting Screws Sizes and PCD

- M1 : M10*1.5P, PCD Ø82.6
- M2 : M10*1.5P, PCD Ø82
- M3 : M10*1.25P, PCD Ø82.6
- M4 : M10*1.25P, PCD Ø82
- C1 : 3/8-16 UNC, PCD Ø82.6
- C2 : 3/8-16 UNC, PCD Ø82

⑥ Design Symbol

- A : Initial Design