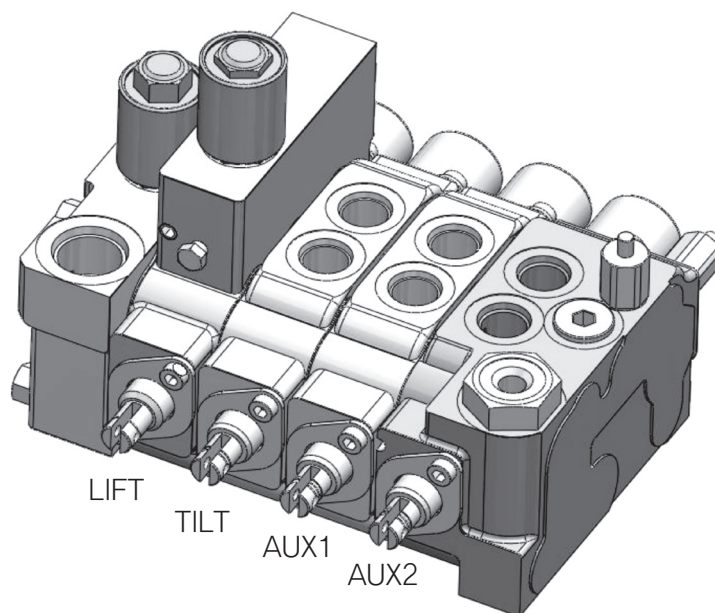
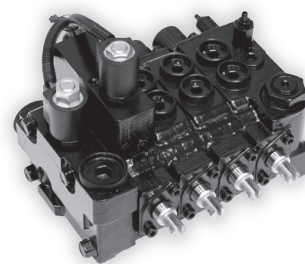


# Main Control Valve



The main control valve for forklift truck is composed of several sections and valves. It controls fork lifting, master tilting, and auxiliary moving functions. The valve mainly functions as a directional control valve, but it also has several pressure and flow control valves, such as relief valve, flow regulator (down control) valve, tilt and lift lock valves. Also, additional safety functioning valves can be attached as in ISO type.

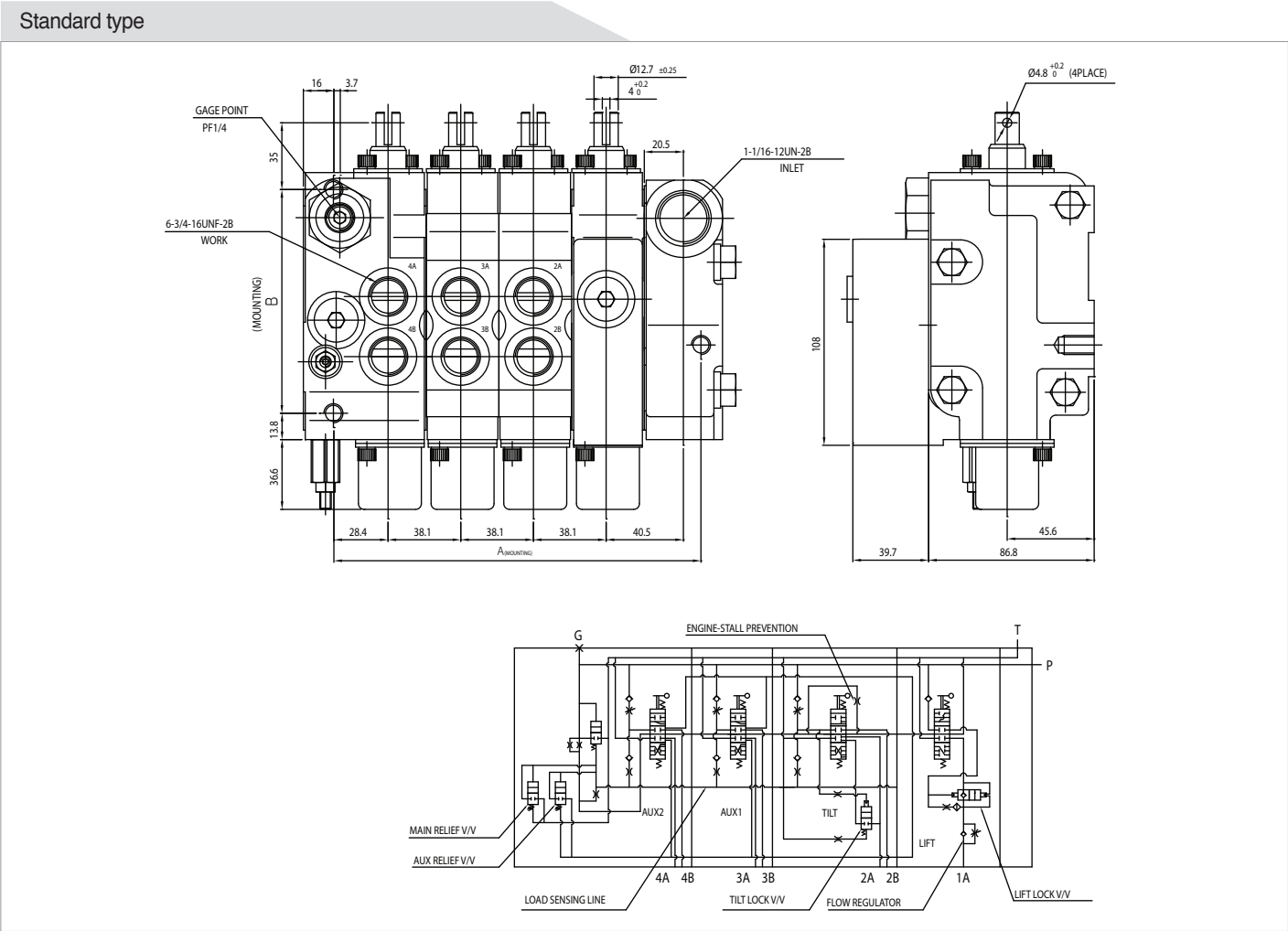
## \* Feature

- By incorporating HYDROSTAT function, energy is reduced and heat generation is minimized.
- Tilt lock valve prevent tilting malfunction by acting counter balance valve.
- Flow Regulator control the work's down speed.
- Lift lock valve increase user's safety by preventing abnormal free fall of the fork.
- In ISO Type, when driver gets out of the seat or the engine stops during operation, the valve prevent accident by cutting off the flow to the directional control part.

### \* Specifications

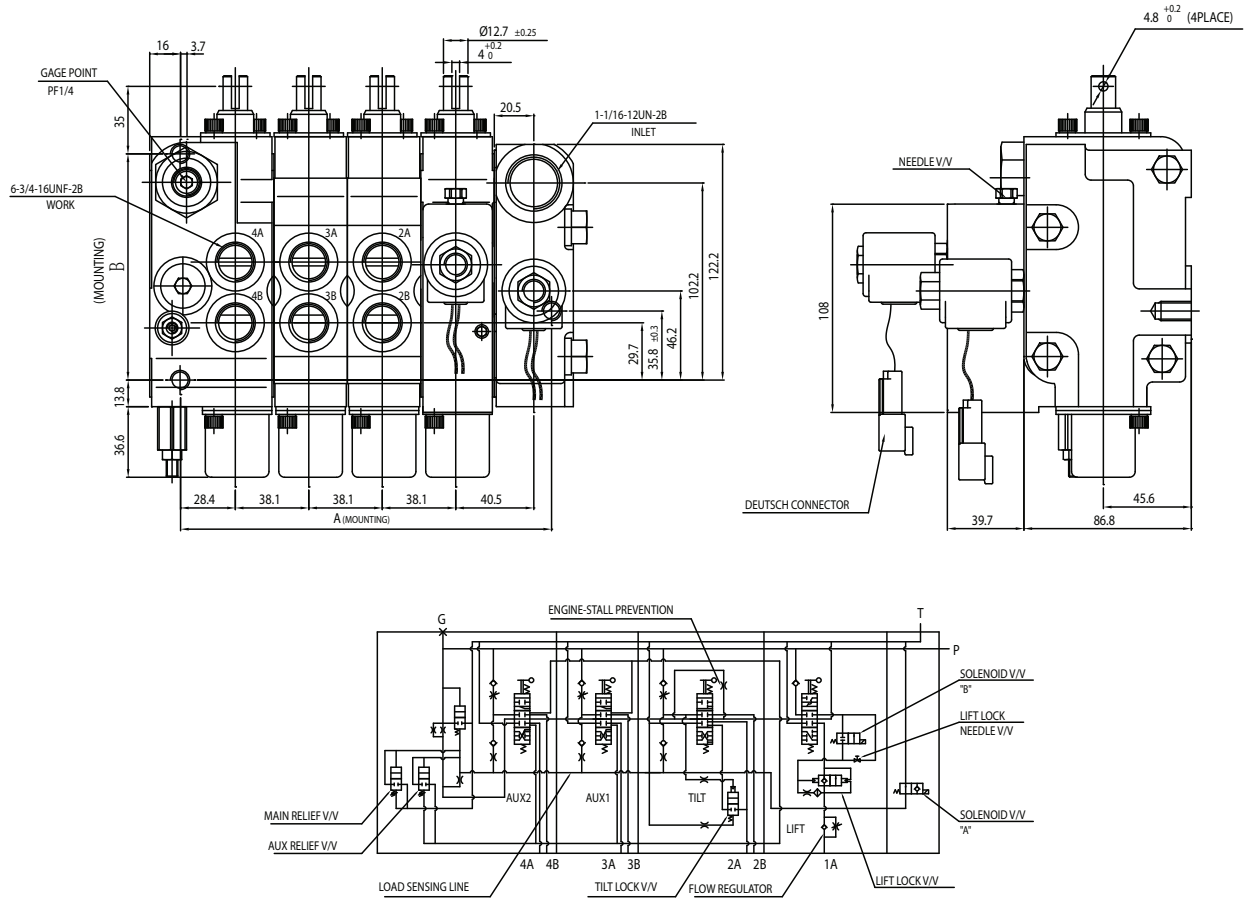
Nominal flow rate		95 l/min
Operating Pressure(Max)		250 bar
Relief Valve Setting Pressure	Main	210 bar
	Auxiliary	165 bar
Back Pressure	Peak	15 bar
	Max	10 bar
Fluid		Mineral Oil ISO VG 46
Fluid Temperature		-30℃ ~-100℃
Ambient Temperature		-30℃ ~50℃

### 3. Dimensional Data



Type	A (mm)	B (mm)	Weight (kg)
2 sections	116.2	117.3	10.9
3 sections	154.3	117.3	13.4
4 sections	192.4	117.3	15.9

## ISO type



Type	A (mm)	B (mm)	Weight (kg)
2 sections	116.2	117.3	10.9
3 sections	154.3	117.3	13.4
4 sections	192.4	117.3	15.9