

SMP is ideal for protecting from abnormal conditions in TV, monitor and so on.
SMP enable us to auto-insert and diminish the space which is needed for the former resistors.

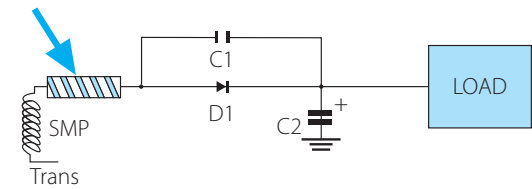
● Features

- Low voltage drop (Low resistance)
- Minimal space insert
- Good inrush current characteristics
- Flame proof
- Lead (Pb) free

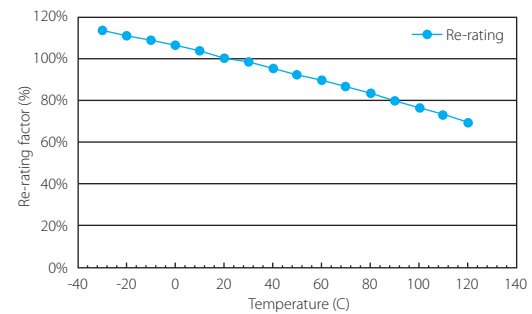
● Time-Current Characteristic

- Very Fast Acting.

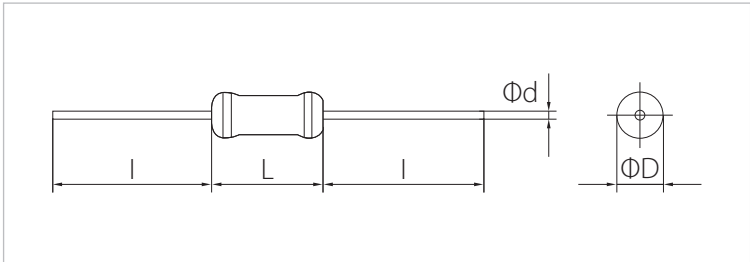
● Breaking Capacity – 50A 125Vac



● Temperature Rating Curve



● Dimension



Dimension (mm)			
L±0.5	ΦD±0.2	L±3.0	Φd±0.02
5.8	2.3	27.0	0.60

● Type Designation

SMP	125	T1	1A00
Products Code	Voltage Rating	Style	Ampere Rating
	125 : 125V	T-/S-: Axial Type R-: Forming Type	1A00 : 1A 3A50 : 3.5A 10A0 : 10A

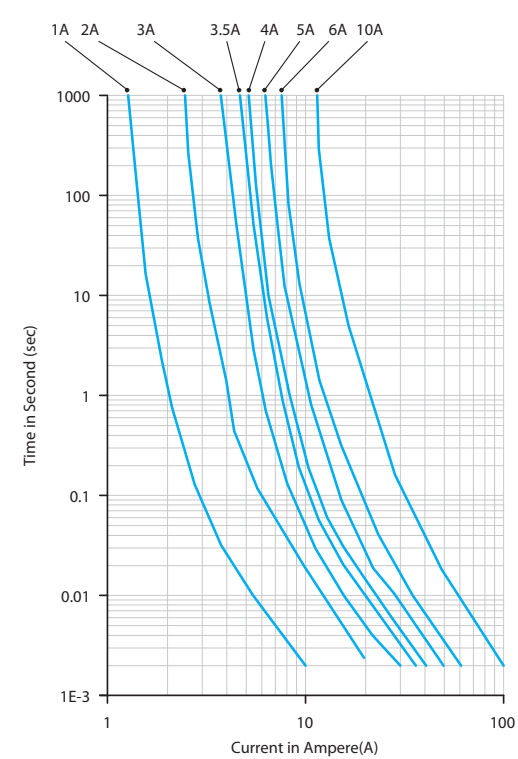
● Agency Approval

Agency	Item	File No.
	SMP 1A ~ 10A	E238986
	SMP 1A ~ 6A	2006010207180007
	SMP 2A ~ 5A	J50177672

● Electrical Characteristics

% of Ampere Rating	Opening Time
100%	4hr, Min.
200%	10sec, Max.

● I-T Curve



● Characteristic

Type	Ampere Rating (A)	Voltage Rating (V)	Nominal Resistance Cold Ohms (Ω)	Nominal Melting I²t (A²s)	Operating Temperature (°C)
1A00	1	125	0.25	0.21	-55~+125
2A00	2		0.08	0.82	
3A00	3		0.06	1.74	
3A50	3.5		0.05	2.45	
4A00	4		0.04	3.26	
5A00	5		0.03	4.98	
6A00	6		0.02	6.86	
10A0	10		0.01	14.4	

● Shape

Type	Axial Type		Forming Type
	26mm	52mm	R-
SMP	O	O	O

● Performance

Test Items	Performance Requirements	Test Methods
Temp. Rise	Max. Temp. Rise 75°C.	Surface Temp. should be measured by Rated current X 100%.
Endurance	± (15% + 0.05Ω)	100 cycles of 80% rated current (DC) carry for 15 Min, then switch off for 4min.
Insulation	0.1MΩ minimum measured by 500V dc Insulation tester	After overload test or Breaking Capacity test.