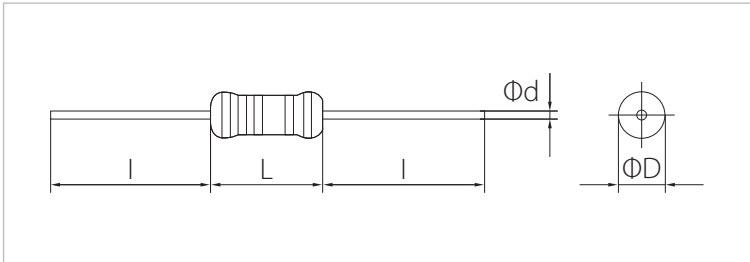


PRD is made by metal glazed coating on the ceramic rod and epoxy is coated on the surface with excellent anti-surge.

●Features

- Excellent anti-surge characteristics.
- Highly stable against environmental conditions and over load.
- Wide range of resistance value.
- Available discharge path value.
- Flame retardant coating.
- Good moisture - resistance.

●Dimension

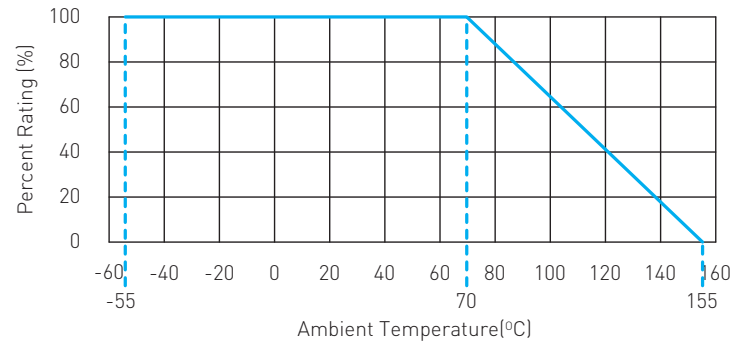


Type	Dimension (mm)			
	L ± 1.0	ΦD ± 0.5	l ± 3.0	Φd ± 0.02
1/2W	8.5	3.2	26.0	0.7
1W	11.0	4.0	26.0	0.7

●Type Designation

PRD	01	T1	10K0	J
Products Code	Power Rating	Style	Nominal Resistance	Resistance Tolerance
	92: 1/2W 01: 1W	T -: Axial Type	10R0: 10Ω 100K: 100KΩ 10M0: 10MΩ	G: ±2% J: ±5% K: ±10%

●Derating Curve



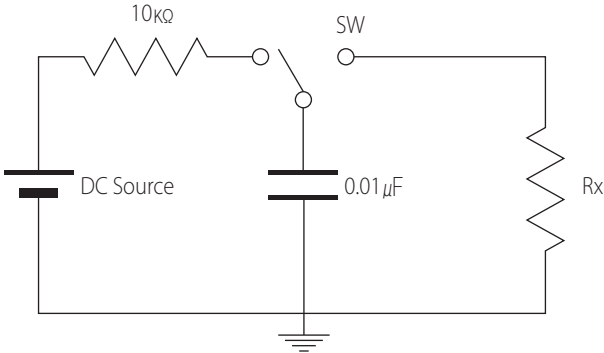
●Rating & Shape

Type	Max.Working Voltage (V)	Max. Overload Voltage (V)	Dielectric Withstanding Voltage (V)	Range (Ω)	Resistance Tolerance (%)	Operating Temp. Range (°C)	Ambient Temperature (°C)	Axial Type
PRM 1/4W	700	1,000	300	3.3~33M	G: ±2	-55~+155	70	O
1W	1,000	1,500	500	47K~33M	J: ±5 K: ±10			O

●Performance

Test Items	Performance Requirements	Test Methods
Resistance	Within specified tolerance	Measure resistance at 25℃
T.C.R	3.3Ω ~ 10KΩ : -1,000PPM/℃ Over 11KΩ : ±350PPM/℃	+25℃/+125℃
Short Time Overload	±[1% + 0.05Ω]	Rated voltage x2.5 for 5sec or Max overload voltage
Resistance Against Soldering Test	±[2% + 0.05Ω]	260±5℃,2~2.5mm,10±1sec measure resistance After1hr at room temp
Load Life in Moisture	±[5% + 0.1Ω]	40±2℃, 90~95%RH,1.5hr ON/0.5hr OFF cycle,1,000hr
Load Life in Temperature	±[5% + 0.1Ω]	70±2℃, 1.5hr ON/0.5hr OFF cycle,1,000hr
Surge	±[10% + 0.1Ω]	Refer to *TEST circuit

\*TEST Circuit



Resistance (Ω)	Pulse Voltage (kV)	Applied Time
3.3~6.2	10	2.5sec ON/ 2.5sec OFF 5cycles
6.8~10	7	
11~9.1K	5	
10K~91K	7	
100K~33M	10	