



- Year/Month : 2007/01
- Client/Owner : Hanmi
- Engineer : ILSHINAUTOCLAVE
- Location : SIHEUNG. REPUBLIC OF KOREA

TITLE

Supercritical CO₂ Dry System

– Remain solvent dry process (Residue solvent dry process)

PROCESS

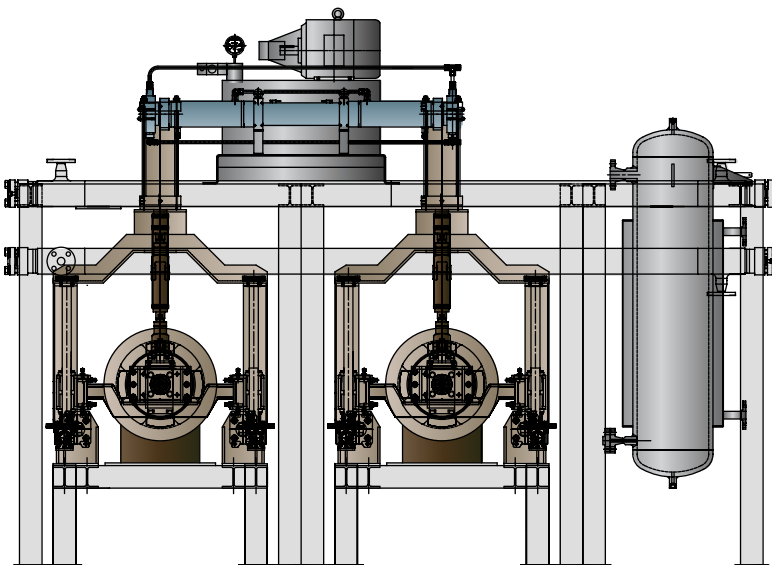
Removal Condition	250kg/cm ² at 80°C
Total Output	2.4 ton/day
Production Time	2hr/batch x 2set

MAJOR APPLIANCES

Dry Reactor	100ℓ x 2 units
Max. Working Pressure	150kg/cm ²
Clutch Door Clamp Closure Type Cover	
Separator	160ℓ x 3 units
HP Pump	20 HP x 2 unit
Max. Working Pressure	250kg/cm ²
Max Flow Rate	15ℓ/min
Pre-Heater	Double Pipe Type x 2 units
Condenser	Shell & Tube Type x 2 units
CO ₂ Reservoir	300ℓ x 1 units
Liquid CO ₂ Tank	20ton x 1 units

(Certificate of Korean Gas Safety inspection)

STRUCTURE



FEATURE

- Conform with Current Good Manufacturing Practice(1st in Korea)
- Automatic system
- Conform with High-pressure Gas Safety Regulation
- Certificate of Korean Gas Safety inspection