

SNS OTHER APPLICATIONS



SLIDING ARM

Features

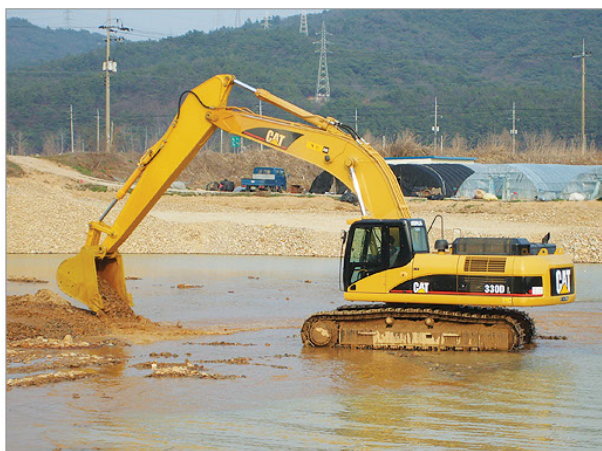
- Simple structure and easy installation.
- Improve working condition where standard arm can not reach.
- Excellent working ability for deep, far and wide digging.



RAIL GUIDE

Features

- Perform earthwork tasks directly on a railroad tracks with both directions.
- Available for wheel & crawler type excavator.
- Install rail guide axle in the base machine.



LONG ARM

Features

- Simple structure and easy installation.
- Increase length of arm to reach where standard arm can not reach.



STRAIGHT BOOM

Features

- Keep straight boom angle to reach where standard arm can not reach.
- Much more productivity due to the front reach and optimized for material handler front.

Sun and Shield

Application for Excavator

Excavator Attachment

Loader Attachment