

STATIONARY ELECTRIC MATERIAL HANDLER

Sun and Shield

Application for Excavator



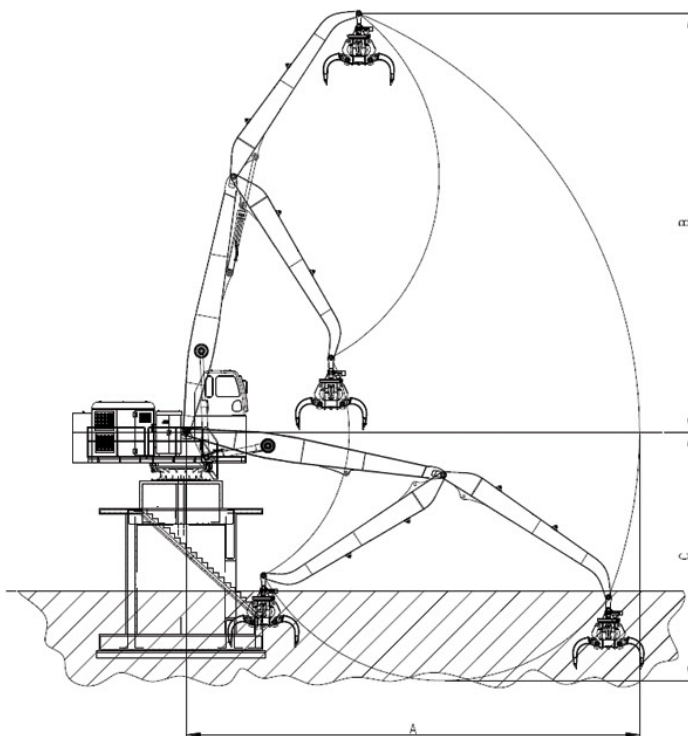
All packages come fully equipped with

- Boom and arm.
- Arm cylinder and pins.
- Hydraulic piping for boom, arm, open/close and rotating functions.
- 2 piece and 3 piece material handler fronts available.
- Optional fixed and hydraulic cab riser kit available.

Features

- Efficient working condition by optimized visibility and working range.
- Low cost and high efficient management.
- Maximum 4 times increased working range available.
- Easy maintenance and low noise by using electric motor.
- A large variety of grapples and clamshell buckets available.
- Custom design for specific application.

Working Range



SNS MODEL	SEM33-55	SEM33-65
MAX. OPERATING REACH (A)	16.8M	19.8M
MAX. PIN HEIGHT (B)	15.3M	18.0M
MAX. DIGGING DEPTH (C)	9.1M	10.8M
BOOM LENGTH	9.5M	11.0M
ARM LENGTH	7.5M	9.0M
LIFT CAPACITY AT MAX. REACH	6.0Ton	4.3Ton
OPERATING WEIGHT (Excluding foundation structure)	33Ton	34Ton
PRESSURE OF HYD. SYSTEM	280~330bar	
ELECTRIC MOTOR	Approx. 132Kw (175Hp), at 1800rpm	

Excavator Attachment

Loader Attachment

STATIONARY ELECTRIC MATERIAL HANDLER



Sun and Shield

Application for Excavator

Maintenance cost between diesel and electric system

CLASSIFY	DIESEL ENGINE	ELECTRIC MOTOR
Cost of Fuel	45.5L/H x 8H/day = 364L/day 364L/day x \$1.7/L = \$618/day	132kw/H x 8H/day = 1,056kw/day
	\$618/day x 300day/year = \$185,400/year	1056kwH/day x \$0.01/kwH = \$84.5/day
Oil/Filter	\$300/month x 12months/year = \$3,600/year	\$84.5/day x 300day/year = \$25,350/year
Yearly	\$189,000/year	\$25,350/year

On the basis of 45ton class excavator fuel cost in Korea.

Assembly Features



Upper Frame



Lower Frame



Boom



Arm



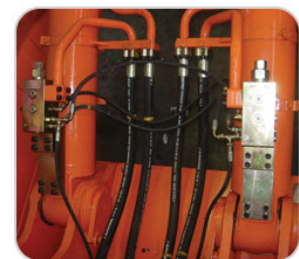
Grapple



Install guide roller, 4 pads – Additional roller and pad to minimize rolling and increase durability



Large oil cooling system with reverse turn function to clean and for keeping cooling performance



Lock valve setting for boom & arm – Prevent any accident

Excavator Attachment

Loader Attachment