

## 9. Pulverization Dissolution Unit ( SWPD2000 frozen cheese, cream, butter etc.)



1

[Main page](#)

[Specification](#)

[Video](#)

[Etc.](#)

[Contents](#)



**SUNGWON**  
MACHINERY CO.,LTD.

# Application

: Pulverization Dissolution Unit that after pulverizing the material of the solid, dissolve to liquor by flow line as heat exchanger.  
(frozen cheese, cream, butter etc.)

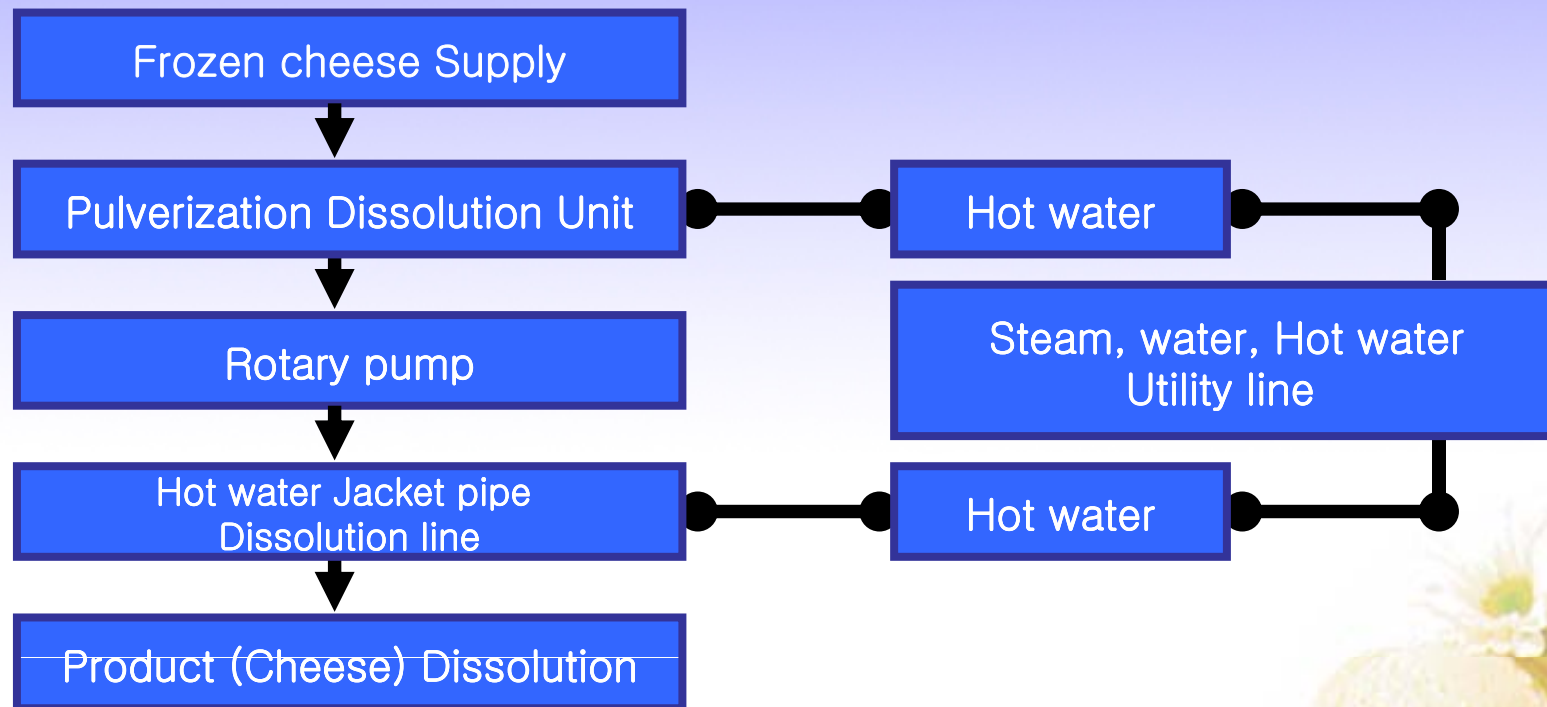
## Merit

: Because there is roller and push button for prevention of slip in pulverizator, easy to adjust transfer speed as per solidity.  
Available pulverization and dissolution on one line.  
Available automatic CIP without disassembly.  
As all line of input part and drive part is treated by sensor, when open, all line stop.



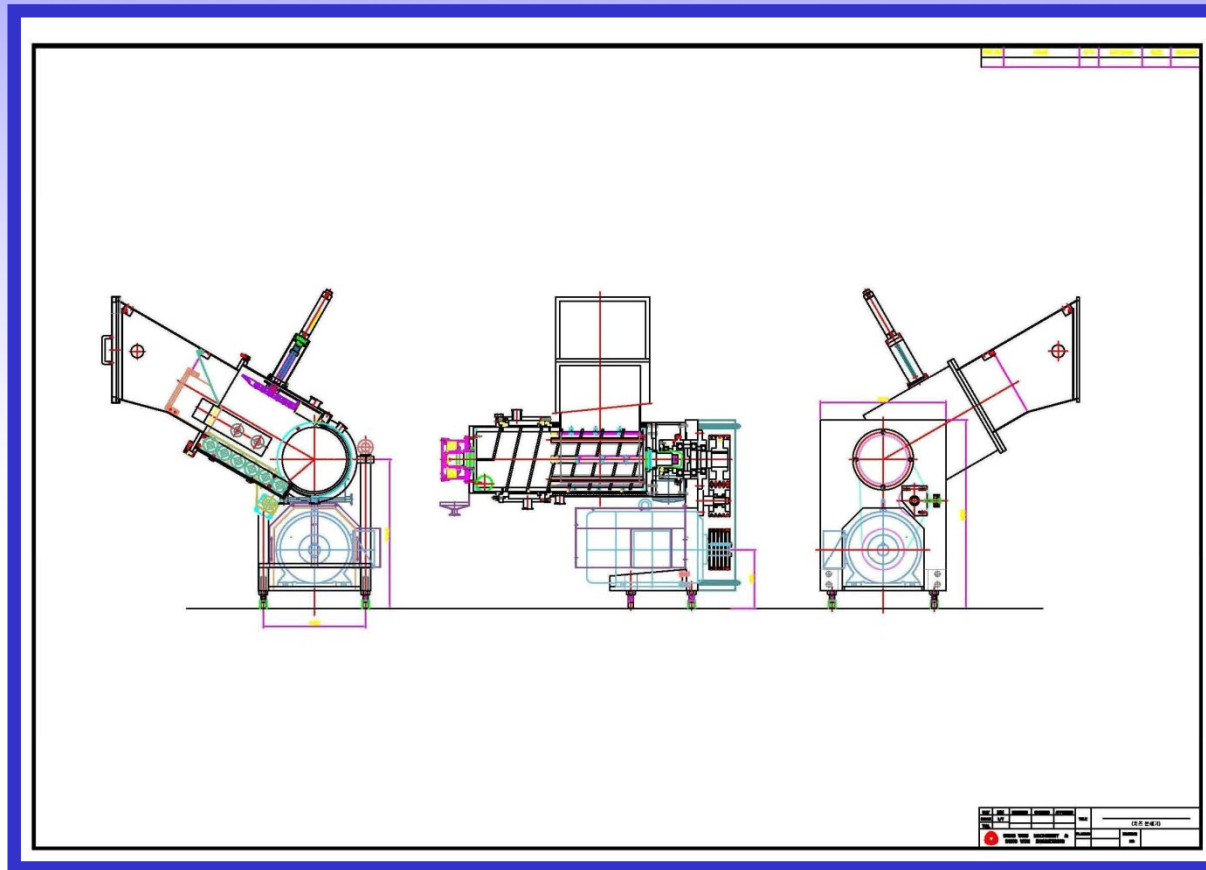
# Production process block diagram

Example ) Standard (Cheese) Pulverization Dissolution line



# Layout SWPD2000 Pulverization Dissolution Unit ( frozen cheese, cream, butter etc.)

## Pulverization Dissolution Unit Layout



Products

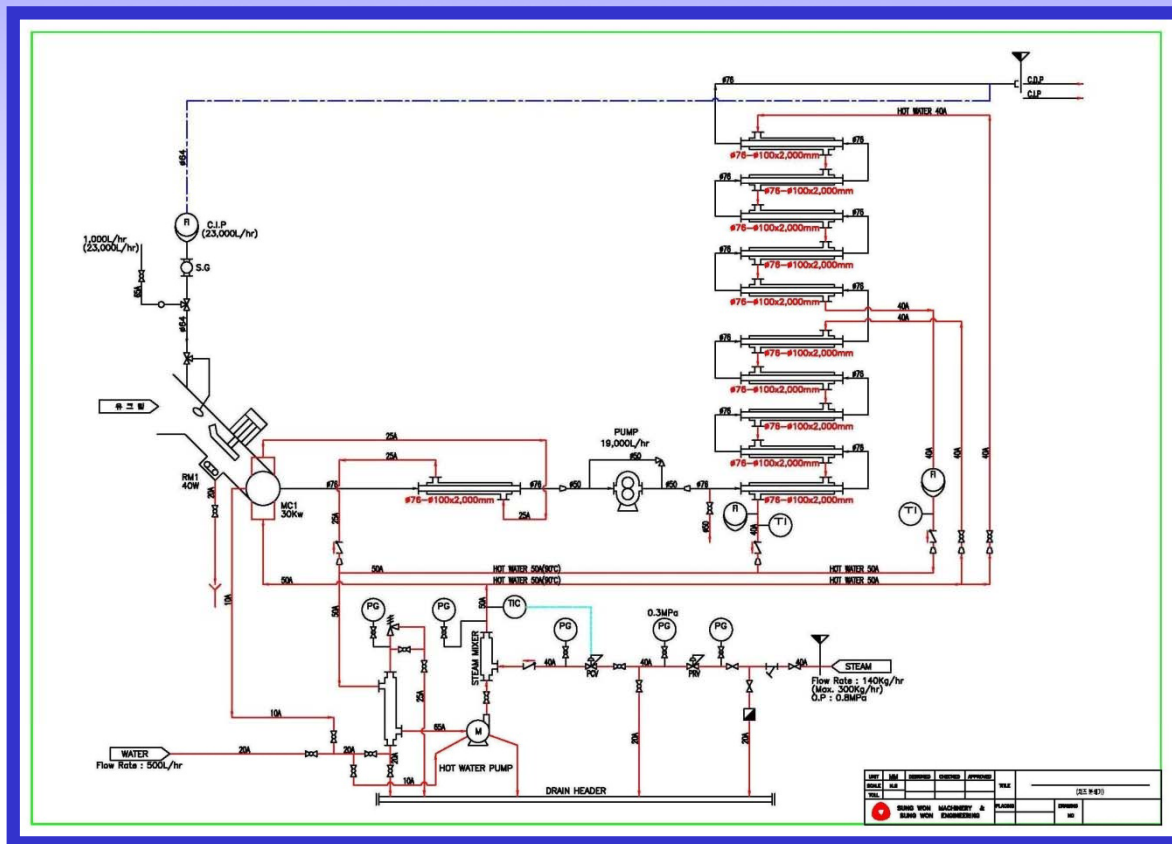
Layout pdf file



# Layout SWPD2000 Pulverization Dissolution Unit ( frozen cheese, cream, butter etc.)

## Pulverization Dissolution Process Layout

Products



Layout pdf file





# Specification

Optional : according to customer specifications

1. Capacity : 1000Kg/h

2. Production Range :

3. Utility Consumption

– Electricity : 3PH 220–440V, 50/60HZ,30Kw

– Water :

– Air : 6BAR

4. Operator : 1 person



# Video

Test 1

Test 2

Test 3

Test 4

Test 5



Pulverization size : 0.2 - 5mm  
(Subject to change by products.)



## Product Image

### Pulverization Dissolution Process line.



Optional : according to customer specifications

Layout



**SUNGWON**  
MACHINERY CO.,LTD.



# Product Image

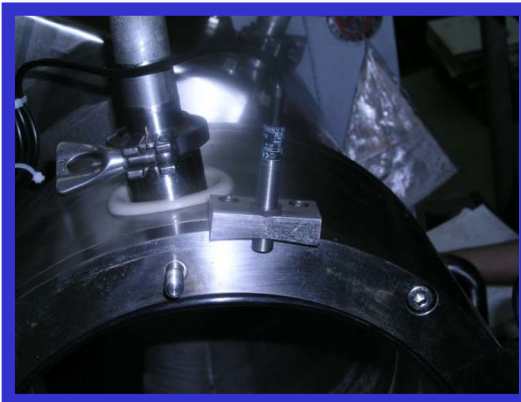
## Pulverization Dissolution Unit.



Product Supply station



Knife station



Safety sensor



Water jacket

Layout



**SUNGWON**  
MACHINERY CO.,LTD.

Etc.

Layout



**SUNGWON**  
MACHINERY CO.,LTD.

936-1, GUMUNCHEON-RI, HYANGNAP-EUP, HWASEONG-SI,  
GYEONGGI-DO, KOREA

TEL : 82-31-366-0600 FAX : 82-31-366-2321

[Http : //swma.koreasme.com](http://swma.koreasme.com)

E-mail : sungwonm@chol.com

