

# SG-3011DCE/232

## Serial to Ethernet Device Server

SerialGate connects legacy serial devices to LAN. SerialGate can be applied in many applications of practice such as; connecting POS (Point of Sales) related devices, connecting various serial devices in factories, monitoring and controlling serial devices in remote are through web browser manipulating security or medical devices, building automation and machinery operations.



### Features

#### COM Port Redirection

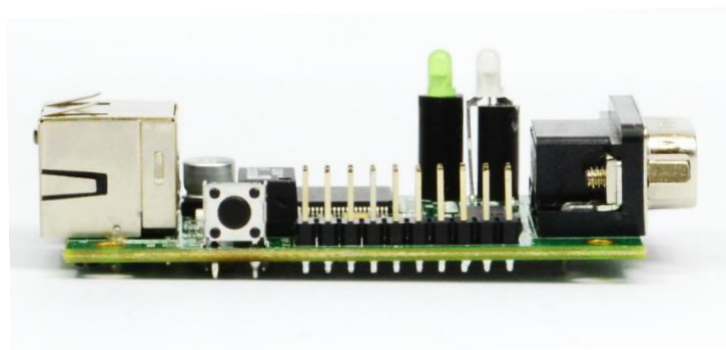
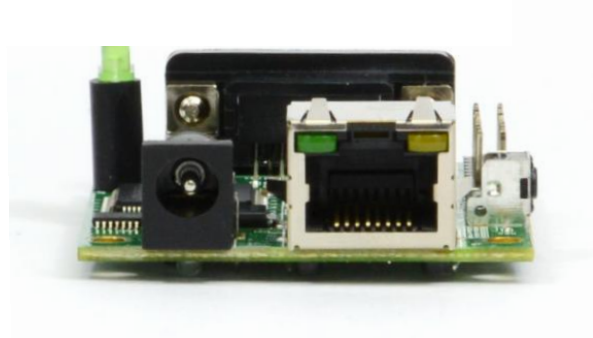
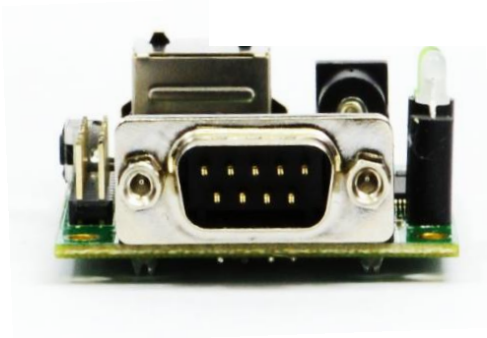
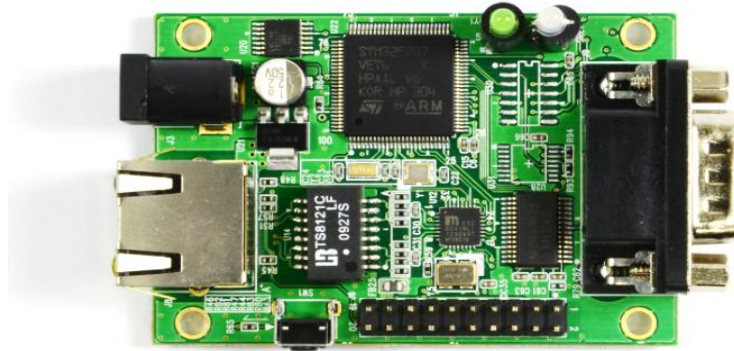
When connected to the Network, serial ports in SerialGate can be used as if they are in your PC.

#### Support RS232C serial interface

The commonly used RS-232C Interface can be utilized.

## SG-3011DCE/232

1 Port RS232 Serial interface to LAN Device server



# SerialGate Specification Sheet

## Communication ( Ethernet )

LAN Port	10/100Mbps RJ-45 Port * 1EA
Network Connection	Static IP, DHCP IP

## Communication ( Serial )

Port	1 Port DB-9 ( RS232)
Speed	Max 921.6kbps
Signals	TXD, RXD, DTR, DSR, CTS, RTS, DCD, RI

## Hardware ( Electrical )

Power Supply	DC 12 V Adapter Power Consumption 1 W
ESD Protection	± 15kV ESD(HBM) Protection
Indicator LED	Ready, Link, Serial Communication Traffic Indicator RJ-45 Connector LED : Speed(Green), Link/Activity(Yellow)

## Hardware ( Physical )

Dimension	46(W)*77.5(L)*25(H)mm
Weight	32.1 g
Operation Temperature	0°C ~ 70°C
Humidity	Max 90% non-condensing

## Reset Button

Feature	Operation	Result
Warm Booting	Press the Reset Button	When SerialGate reboots

# SerialGate Specification Sheet

## Software

Protocol	TCP, UDP, ICMP, DHCP,HTTP
Utility	Portview
Configuration Environment	Web

## Ordering Information

SG-1010/232-RJ	1 x Serial RJ-45 Port (RS232 only)
SG-1010/Combo-RJ	1 x Serial RJ-45 Port (RS422/RS485 selectable)
SG-1010/ALL	1 x Serial DB-9 & T/B Port (RS232/RS422/RS485 selectable)
SG-1010W/ALL	1 x Serial DB-9 & T/B Port (RS232/RS422/RS485 selectable)
SG-1020/232-RJ	2 x Serial RJ-45 Port (RS232 only)
SG-1020/Combo-RJ	2 x Serial RJ-45 Port (RS422/RS485 selectable)
SG-1020/ALL	2 x Serial DB-9 & T/B Port (RS232/RS422/RS485 selectable)
SG-1020W/ALL	2 x Serial DB-9 & T/B Port (RS232/RS422/RS485 selectable)
SG-1040/232 Series	4 x Serial RJ-45 Port (RS232 only)
SG-1040/Combo Series	4 x Serial RJ-45 Port (RS422/RS485 selectable)
SG-1080/232 Series	8 x Serial RJ-45 Port (RS232 only)
SG-1080/Combo Series	8 x Serial RJ-45 Port (RS422/RS485 selectable)
SG-1160/ALL	16 x Serial RJ-45 Port (RS232/RS422/RS485 selectable)

SG-3011DCE/232	1 x Serial RJ-45 Port (RS232 only)
----------------	------------------------------------